

Dilaton at the LHC: complementary probe of composite Higgs

Sebastian Bruggisser,^{a,b} Benedict von Harling,^c Oleksii Matsedonskyi^d
and Géraldine Servant^{e,f}

^a*Institut für Theoretische Physik, Universität Heidelberg,
D-69120 Heidelberg, Germany*

^b*Department of Physics and Astronomy, Uppsala University,
75120 Uppsala, Sweden*

^c*Institut de Física d'Altes Energies (IFAE), The Barcelona Institute of Science and Technology,
Campus UAB, 08193 Bellaterra (Barcelona), Spain*

^d*DAMTP, University of Cambridge,
Wilberforce Road, Cambridge, CB3 0WA, United Kingdom*

^e*Deutsches Elektronen-Synchrotron DESY,
Notkestr. 85, 22607 Hamburg, Germany*

^f*II. Institute of Theoretical Physics, Universität Hamburg,
D-22761, Germany*

E-mail: bruggisser@thphys.uni-heidelberg.de, benedictvh@gmail.com,
alexey.mtsd@gmail.com, geraldine.servant@desy.de

ABSTRACT: The dilaton is predicted in various extensions of the standard model containing sectors with an approximate spontaneously-broken conformal invariance. As a Goldstone boson of a spontaneously broken symmetry, the dilaton can naturally be one of the lightest new physics particles, and therefore may be the first new physics imprint observed in collider experiments. In particular, it can arise in composite Higgs models which are often assumed to have approximate conformal invariance in the UV. The dilaton is then a composite state, generated by the same sector that produces the Higgs. We continue the exploration of composite dilaton signatures at the LHC, using the latest experimental data and analysing the future detection prospects. We elaborate on the connection of the dilaton properties with the properties of the Higgs potential, clarifying in particular the relation between the scale relevant for electroweak fine tuning and the scale controlling the dilaton couplings. This relation is then used to derive the experimental sensitivity to the dilaton in natural composite Higgs scenarios, which reaches ~ 3 TeV in dilaton mass for generic parameter choices. At the same time, we show that dilaton searches are a complementary direction to probe Higgs boson compositeness, with the sensitivity comparable or exceeding that of Higgs coupling measurements.

KEYWORDS: Compositeness, New Light Particles

ARXIV EPRINT: [2212.00056](https://arxiv.org/abs/2212.00056)

Contents

1	Motivation	1
2	Effective description for dilaton+Higgs	2
2.1	Dilaton description	2
2.2	Connection to the Higgs potential and EW scale naturalness	4
2.3	Dilaton-Higgs mixing and minimal mass splitting	7
3	Dilaton phenomenology	8
3.1	Fermions	8
3.2	Massive vectors	9
3.3	Gluons	11
3.4	Photons	12
3.5	$Z\gamma$	12
3.6	Higgs	13
3.7	Higgs-coupling modifications	13
4	Collider bounds	14
5	Discussion	18
A	Loop functions	20

1 Motivation

The dilaton is a well-motivated new scalar particle that could appear around the TeV scale. It can arise for example in composite Higgs models addressing the Higgs mass naturalness problem and their 5D holographic duals.¹ In this context, it can play a prominent role for dark matter phenomenology [2–4], serving as a portal to dark matter. Another important property of the dilaton is that it naturally drives a strong cosmological first-order phase transition [5–7], leaving a very large signature in gravitational waves [8]. It is also a leading candidate for motivating supercooled phase transitions with unique cosmological implications such as cold baryogenesis [9], baryogenesis from strong CP-violation [10], QCD-induced electroweak phase transition [11, 12], intermediate low-scale inflationary stages [6, 12, 13] and modified dark matter abundances [4, 12, 14]. Another intriguing feature of the dilaton is its possible link to flavour physics and the fermion mass hierarchy, and the possibility to induce baryogenesis from varying Yukawa couplings [15–17]. The

¹More precisely, the composite dilaton is dual to the *radion* of the Randall-Sundrum models [1].

interplay of the dilaton potential with the Higgs potential and the consequences for the electroweak phase transition and electroweak baryogenesis were studied in detail in [16–18].

The dilaton is the Goldstone boson of spontaneously broken conformal invariance [19–23]. Featuring the Goldstone symmetry protection, the dilaton can be significantly lighter than other new physics states, with a mass suppressed by the parameters breaking the conformal invariance (e.g. beta-functions of slowly running couplings), and hence could be the first directly observed new-physics particle. In particular, a light dilaton was obtained explicitly in certain 5-dimensional models which could be dual to 4-dimensional strongly-interacting theories [19–23]; the appearance of a light composite resonance was also observed in the lattice simulation of QCD-like theories with a large number of fermionic flavours [24, 25]. The collider phenomenology of the dilaton has attracted a lot of attention in the past [2, 3, 26–48]. In this work, we present an update of the experimental bounds on the dilaton by interpreting the latest LHC exclusion limits, and also show the HL-LHC sensitivity projection.

Our analysis is focused on scenarios where the Higgs boson is a composite state and arises as the Goldstone boson of some spontaneously broken global symmetry [49]. These composite Higgs models are motivated by the gauge hierarchy problem, and often assumed to feature an approximate conformal symmetry in the UV [50]. This can result in a composite dilaton with $\mathcal{O}(100 \text{ GeV}) - \mathcal{O}(1 \text{ TeV})$ mass, generated by the same sector which produces the Higgs. Since the main underlying motivation for a dilaton in this case is the electroweak (EW) scale naturalness, it is suggestive to investigate in detail the implications of naturalness for the properties of the dilaton. We use a unified framework for the description of the composite dilaton and Higgs boson, based on the constraints imposed by the presence of spontaneously broken conformal and flavour symmetries of the new-physics sector. Additionally, we impose relations between different parameters derived from a large- N expansion, assuming that the underlying new strongly-coupled theory is $SU(N)$ Yang-Mills. This minimal number of assumptions allows to draw valuable conclusions on the dilaton couplings and use them to confront this scenario with experimental data.

The paper is organised as follows. We set up the effective description for the composite Higgs and dilaton in section 2. In section 3 we list the dilaton interactions which are most relevant for collider experiments, and use them to derive experimental bounds in section 4. We discuss our results in section 5.

2 Effective description for dilaton+Higgs

2.1 Dilaton description

We will assume that the composite sector is approximately scale-invariant in the UV, but contains operators whose coefficients slowly run with energy. Such a slow running eventually results in the confinement at the $\mathcal{O}(\text{TeV})$ scale, which can then be interpreted as a scale of spontaneous breaking of conformal invariance. The spontaneous breaking in turn results in an associated parametrically light Goldstone boson — the dilaton [19, 21, 22], whose VEV is related to the confinement scale. The fact that the dilaton mass (suppressed by the size of the explicit scale-invariance breaking) can be parametrically lower than the mass of

other composite new physics states, allows us to concentrate, for the purpose of dilaton collider phenomenology, on the dilaton interactions with only the standard model (SM) states. These will dictate both its production and decay. We will therefore consider an effective field theory (EFT) where the heavy composite states are integrated out.

The dilaton couplings can be deduced from the energy scaling properties of different operators. Simplistically, the construction of the EFT Lagrangian can be understood as follows (see e.g. [51] and references therein for similar discussions on the dilaton EFT). Scale invariance is spontaneously broken if the theory features a scalar operator which gets a non-zero vacuum expectation value (VEV). In the limit of weakly broken conformal invariance the field excitations around this VEV should correspond to a light state — the dilaton. More precisely, we will use the parametrisation where the VEV of the dilaton field χ sets the scale of conformal-invariance breaking,

$$\langle \chi \rangle \equiv \chi_0 \neq 0, \tag{2.1}$$

while the physical dilaton quanta correspond to the excitations above this background, $\delta\chi = \chi - \chi_0$. Other states of the conformal sector acquire a mass $\propto \chi_0$, of order a few TeV, and will be integrated out from our EFT. The EFT then contains the SM states (which we assume to not be part of the conformal sector) and the conformal sector states whose mass is protected by some symmetries, such as a dilaton, and the Higgs which we discuss in the next section. At the same time this EFT does not feature conformal invariance anymore. However, treating χ as a dilatation symmetry-breaking spurion, transforming as $\chi \rightarrow \kappa^{-1}\chi$ under dilatations $x_\mu \rightarrow \kappa x_\mu$, we can derive the form of the EFT interactions, by requiring the operators to be formally scale-invariant. For example, assuming that the SM fermions acquire mass from the dilaton VEV we can derive their interactions with the dilaton

$$\mathcal{L}_{m_\psi} = m_\psi \bar{\psi}\psi \rightarrow m_\psi \frac{\chi}{\chi_0} \bar{\psi}\psi = m_\psi \left\{ 1 + \frac{\delta\chi}{\chi_0} \right\} \bar{\psi}\psi, \tag{2.2}$$

where we used that the scaling dimension of a fermionic bilinear operator $\bar{\psi}\psi$ is 3, the dimension of d^4x in the action is -4 and hence one dilaton insertion is needed to recover scale invariance. Furthermore, additional interactions can be generated by the sources of explicit scale invariance breaking in the conformal sector. For example the fermionic mass m_ψ can be proportional to a Yukawa coupling λ_ψ which runs with energy. At the condensation scale χ the new-physics degrees of freedom other than the dilaton should become heavy and hence decouple from the RG evolution. To account for their χ -dependent contribution in the running till that scale we should then use

$$\lambda_\psi \rightarrow \lambda_\psi \left(1 + \left[\frac{\partial \log \lambda_\psi}{\partial \log \mu} \right]_{\text{CFT}} \frac{\delta\chi}{\chi_0} \right), \tag{2.3}$$

where the term in square brackets only includes the contribution to the running from the decoupled conformal field theory (CFT) degrees of freedom. This introduces the following additional contribution to the dilaton interaction

$$\mathcal{L}_{m_\psi} \rightarrow m_\psi \left\{ 1 + \frac{\delta\chi}{\chi_0} + \left[\frac{\partial \log \lambda_\psi}{\partial \log \mu} \right]_{\text{CFT}} \frac{\delta\chi}{\chi_0} \right\} \bar{\psi}\psi + \dots \tag{2.4}$$

Finally, the dilaton couplings can be altered in the presence of mass mixing between the dilaton and the Higgs boson. The diagonalisation of the Higgs-dilaton mass matrix amounts to a redefinition

$$\chi = \chi_0 + c_\theta \hat{\chi} - s_\theta \hat{h}, \quad h = v + c_\theta \hat{h} + s_\theta \hat{\chi}, \quad (2.5)$$

where \hat{h} and $\hat{\chi}$ are the mass eigenstates. Assuming that the mass of the fermion ψ scales like (as typically the case in Composite Higgs models)

$$m_\psi \propto \sin(h/f) \quad (2.6)$$

with f being the Higgs decay constant (more on that in the next sections), we find that the leading interaction of the dilaton-like mass eigenstate is given by

$$\mathcal{L}_{m_\psi} \rightarrow m_\psi \bar{\psi} \psi \hat{\chi} \left\{ s_\theta \frac{1}{v} + c_\theta \frac{1}{\chi_0} \left(1 + \left[\frac{\partial \log \lambda_\psi}{\partial \log \mu} \right]_{\text{CFT}} \right) \right\} + \dots, \quad (2.7)$$

where we neglected $(v/f)^2$ corrections. For the pseudo-Goldstone Higgs boson the mixing angle θ is vanishing in the limit of exact scale invariance and hence is sensitive to the explicit breaking of the latter [17, 51]. We will discuss the mixing in more detail section 2.3.

Following these simple rules, in section 3 we will write down explicitly the relevant dilaton couplings to SM states.

2.2 Connection to the Higgs potential and EW scale naturalness

We have discussed generic features of the dilaton interactions with SM states external to the CFT sector. We will now assume that the Higgs boson is a composite state produced by the CFT dynamics. To ensure its lightness compared to other CFT states with mass $m_{\text{CFT}} \propto \chi_0$ we will consider the case that the Higgs is a pseudo Nambu-Goldstone boson (NGB) of some approximate flavour symmetry G of the CFT sector which is spontaneously broken to a subgroup H at the CFT condensation scale. For example the minimal $\text{SO}(5) \rightarrow \text{SO}(4)$ breaking pattern [52], with the SM $\text{SU}(2)_L$ embedded into $\text{SO}(5)$, gives exactly four NGBs allowing to form the complex Higgs doublet. The Higgs compositeness which we assume here allows to address the EW scale naturalness problem, up to a relatively small residual fine-tuning [53]. In this section we will discuss how this fine-tuning is related to the dilaton couplings.

The Higgs potential is generated by the couplings which explicitly break the G invariance, and include the SM gauge couplings and the top quark Yukawa coupling.² The resulting one-loop scalar potential has the following form at the leading order in elementary-composite interactions [49, 54]

$$V_h = \alpha \sin^2 h/f + \beta \sin^4 h/f, \quad (2.8)$$

where f is the scale of $G \rightarrow H$ symmetry breaking. As we will discuss later, this scale can be parametrically different from the scale χ_0 . By expanding the trigonometric functions in the above formula, one sees that f controls higher-order interactions of the Higgs boson, which

²The EW symmetry group is embedded into G but the SM states only form incomplete G -multiplets, hence their interactions break G .

are absent in the SM. Analogous higher-order interactions appear in all Higgs couplings, and are constrained by experimental data. Currently, the parameter $\xi \equiv (246 \text{ GeV}/f)^2$ is restricted to be around or less than 0.1 [53], or, equivalently

$$f \gtrsim 800 \text{ GeV}. \tag{2.9}$$

At the same time, the Higgs VEV is dictated by eq. (2.8) and reads $h^2 = -(1/2)(\alpha/\beta)f^2$. The Higgs VEV is then expected to be of order f , unless α and β are finely tuned, since one generically expects $\alpha \gtrsim \beta$ in this type of theories.³ The corresponding degree of unnatural fine-tuning is given by ξ : weaker tuning requires larger ξ and lower f . The parameter f hence has a paramount importance for Higgs physics and EW scale naturalness. We will now discuss how it is connected to the dilaton scale χ_0 .

To gain parametric estimates of the properties of the conformal sector we assume that it behaves as an $SU(N)$ confining QCD-like theory. The parameter f corresponds to the VEV of some condensate transforming non-trivially under the global symmetry group G and breaking the latter spontaneously. We will therefore associate f with an analogue of the quark-antiquark condensate, with its excitations (such as the Higgs) corresponding to meson-like states. The dilaton scale χ , on the other hand, corresponds to the VEV of a condensate which can a priori be neutral under G , and whose excitations can be either glueball-like or meson-like states. Although in the analyses based on the AdS/CFT correspondence the dilaton follows the glueball-like behaviour, we retain the meson-like option to be able to capture a more general class of theories. As a matter of fact, most of the previous studies of dilaton phenomenology in the composite Higgs context were equating f and χ_0 which, as we discuss below, corresponds to a meson-like χ .

According to ref. [56], in an $SU(N)$ theory, each canonically normalised meson field enters the Lagrangian with a factor of $1/\sqrt{N}$, while each glueball field is accompanied by $1/N$. This can be reflected by defining the following couplings for mesons and glueballs

$$g_{\text{mes}} = 4\pi/\sqrt{N}, \quad g_{\text{glue}} = 4\pi/N, \tag{2.10}$$

where the factors of 4π are chosen to reproduce a fully strongly coupled theory as $N \rightarrow 1$. At the same time, ref. [56] shows that the masses of meson- and glueball-like states do not scale with N . Using dimensional analysis one can then recover the scaling of the VEVs $\langle \dots \rangle$ of the different condensates with N :

$$\langle \text{meson} \rangle \propto \frac{m_{\text{mes}}}{g_{\text{mes}}} \propto \sqrt{N}, \quad \langle \text{glueball} \rangle \propto \frac{m_{\text{glue}}}{g_{\text{glue}}} \propto N. \tag{2.11}$$

This implies the following N -scaling relation between the decay constants of the Higgs and the dilaton

$$f \propto \frac{g_\chi}{g_{\text{mes}}} \chi_0, \tag{2.12}$$

where $g_\chi = g_{\text{mes}}(g_{\text{glue}})$ for a meson (glueball) dilaton (see [17] for an alternative derivation of this N -scaling). In the case of a glueball-like dilaton this becomes

$$f \propto \chi_0/\sqrt{N} \quad (\text{glueball-like dilaton}), \tag{2.13}$$

³See e.g. [55] for a proposal which could remove this tuning.

allowing for χ_0 to be much larger than f for large N . For a meson-like dilaton, on the other hand, we find

$$f \propto \chi_0 \quad (\text{meson-like dilaton}), \tag{2.14}$$

independent of N .

An intuitive way (although eventually based on the same large- N counting) to derive the \sqrt{N} -enhancement of the gluon condensate (2.13) is the following. Let us assume that the conformal symmetry breaking is driven by the gluon condensate χ , which also interacts with a quark-antiquark condensate σ and sets the scale of the latter. According to the large- N counting [56], the glueball-meson scattering amplitude is $1/N^2$ suppressed, while the meson-meson scattering amplitude goes like $1/N$. The corresponding potential would schematically look like

$$V_\sigma = -\frac{1}{N^2}\chi^2|\sigma|^2 + \frac{1}{N}|\sigma|^4, \tag{2.15}$$

which leads precisely to the dependence of f on the dilaton VEV derived above: $f = \langle \sigma \rangle \sim \langle \chi \rangle / \sqrt{N}$.

Finally, an analogous relation between χ_0 and f can also be derived based on the AdS/CFT correspondence using 5D dual models. In this case the NGB composite Higgs can be modelled by the 5th component of a gauge field propagating in the bulk. The Higgs decay constant f_{RS} is then given by [52]⁴

$$f_{\text{RS}} = \mu_{\text{RS}} \frac{2}{g_5 \sqrt{k}}, \tag{2.16}$$

where μ_{RS} is the VEV of the radion and $g_5 \sqrt{k}$ approximately equals the coupling of KK modes of the bulk gauge field [57]. These KK excitations should correspond to meson-like composite states in the 4D dual theory, and hence we fix $g_5 \sqrt{k} = g_{\text{mes}}$. Assuming that this coupling follows the large- N estimate, $g_{\text{mes}} = 4\pi/\sqrt{N}$, one obtains the relation $f_{\text{RS}} \propto \mu_{\text{RS}} \sqrt{N}$. This scaling can also be derived by an explicit string theory computation, see e.g. [58]. Now, switching to the canonically normalized radion $\tilde{\mu}_{\text{RS}} = \sqrt{24}\mu_{\text{RS}}/g_\chi$, dual to the dilaton χ , with $g_\chi = 4\pi/N$ fixed by AdS/CFT, we get

$$f_{\text{RS}} = \tilde{\mu}_{\text{RS}} \frac{2}{\sqrt{24}} \frac{g_\chi}{g_{\text{mes}}} \simeq \tilde{\mu}_{\text{RS}} \frac{0.4}{\sqrt{N}}. \tag{2.17}$$

This has the same N -dependence as was obtained in eq. (2.13), up to an overall order-one factor. Generally speaking, the large- N expansion allows to estimate the size of various quantities only up to order-a-few factors. To account for this ambiguity we introduce a coefficient c_{h_χ} in eq. (2.13), such that the relation between χ_0 and f reads

$$\chi_0 = c_{h_\chi} \left(\frac{g_{\text{mes}}}{g_\chi} \right) f = c_{h_\chi} f \begin{cases} \sqrt{N} & \text{for glueball-like dilaton} \\ 1 & \text{for meson-like dilaton.} \end{cases} \tag{2.18}$$

In the following we will let c_{h_χ} vary within an order-one range.

⁴We skip a proper introduction to the higher-dimensional dual theories which is beyond the scope of this paper, but can be found in numerous reviews.

2.3 Dilaton-Higgs mixing and minimal mass splitting

The dilaton and Higgs phenomenology depends significantly on the mass mixing between the two fields, as we will discuss in detail in the next sections. This mass mixing can only be induced by operators which include both sources breaking the Higgs shift symmetry and those breaking conformal invariance [17, 51]. Indeed, in the absence of Higgs-shift-symmetry breaking the Goldstone Higgs can not have any potential at all. While in the absence of conformal-invariance breaking the Higgs-dependent part of the potential reads $V_{h\chi} \propto \chi^4 V(h/f)$, with $\partial_h V(h/f) = 0$ in the minimum of the scalar potential. Hence the mass mixing $\partial_h \partial_\chi V_{h\chi}$ vanishes too.

The main source of Higgs-shift-symmetry breaking is the top quark Yukawa coupling, while for the breaking of conformal invariance we can single out two distinct types of sources. The first one is the breaking induced by interactions of the (nearly) conformal sector, and the second type comes from the breaking induced by coupling the conformal sector with external elementary fields. The main practical difference for the purpose of our discussion is that the latter type can *a priori* be unrelated to the dilaton mass, as we discuss in the following.

We will use the following estimate for the mass mixing

$$m_{h\chi}^2 \simeq m_*^2 \times \left[\frac{3\lambda_t^2}{16\pi^2} \right] \times [\gamma_{\text{comp}} + \gamma_{\text{elem}}] \times \left[\frac{f}{\chi_0} \right]. \quad (2.19)$$

The factor

$$m_*^2 = g_{\text{mes}}^2 f^2 = g_\chi^2 \chi_0^2 / c_{h\chi}^2 \quad (2.20)$$

is a generic coefficient of mass-dimension-two operators generated by the composite sector [56] if no selection rules or symmetry suppression apply. The first square brackets in (2.19) contain the estimated size of the Higgs-shift-symmetry breaking induced by a loop with an elementary top quark. The two parameters in the second square brackets, γ_{comp} and γ_{elem} , parametrise the conformal-invariance breaking induced by the nearly-conformal sector itself, and by its interactions with the elementary states, respectively.

The parameter γ_{comp} is related to the dilaton mass. Indeed, the general form of the dilaton potential in the presence of a scalar CFT operator \mathcal{O}_ϵ with a running coefficient $\epsilon(\mu)$ is

$$V_\chi = g_\chi^2 \chi^4 + g_\chi^2 \epsilon(\chi) \chi^4. \quad (2.21)$$

This results in the dilaton mass $m_\chi^2 \sim \gamma_{\text{comp}} m_*^2$ [17], where $\gamma_{\text{comp}} = \gamma_\epsilon = \partial \log \epsilon / \partial \log \mu$. Hence an insertion of a conformal-invariance-breaking operator \mathcal{O}_ϵ in a loop diagram produces a factor $\epsilon(\chi) \simeq \epsilon(\chi_0)(1 + \gamma_\epsilon(\chi - \chi_0)/\chi_0)$. The non-trivial dependence on the dilaton thus comes with a factor $\gamma_\epsilon \sim m_\chi^2 / m_*^2$.

The second source of conformal-invariance breaking, corresponding to γ_{elem} , is assumed to be generated by interactions with the elementary fields. For example, if the top quark Yukawa coupling varies significantly with the dilaton VEV, we obtain $\gamma_{\text{elem}} \sim \partial \log \lambda_t / \partial \log \mu$. Note that, unlike γ_{comp} , γ_{elem} can only contribute to the dilaton mass due to loops with elementary fermions, hence the contribution of γ_{elem} to m_χ^2 has to be suppressed by a loop

factor. We therefore assume that the dilaton mass is mostly determined by γ_{comp} , while γ_{elem} is not constrained and can, in particular, be greater than γ_{comp} and give the main contribution to the mass mixing term $m_{h\chi}^2$. This is expected to happen for example in the models of refs. [15–17].

Finally, the factor f/χ_0 in eq. (2.19) can be deduced from dimensional analysis [17], and in the case of a glueball-like dilaton represents the expected $1/\sqrt{N}$ -suppression of the glueball-meson mixing.

Let us now discuss the effect of the mass mixing term on the mass diagonalization. First of all, diagonalizing the mass matrix $\{\{m_{hh}^2, m_{h\chi}^2\}, \{m_{h\chi}^2, m_{\chi\chi}^2\}\} \rightarrow \text{diag}\{m_h^2, m_\chi^2\}$ we see that the dilaton-Higgs mass splitting should satisfy

$$|m_\chi^2 - m_h^2| \geq 2|m_{h\chi}^2|, \tag{2.22}$$

otherwise obtaining the desired dilaton mass is not possible. Furthermore, the mixing angle between the dilaton and the Higgs is given by [59]

$$|\sin \theta| = \frac{1}{\sqrt{2}} \sqrt{1 - \sqrt{1 - 4 \frac{m_{h\chi}^4}{(m_\chi^2 - m_h^2)^2}}} \simeq \left| \frac{m_{h\chi}^2}{m_\chi^2 - m_h^2} \right|, \tag{2.23}$$

where in the last step we have expanded for small mass mixing. The mixing angle grows as the mass difference $|m_\chi^2 - m_h^2|$ approaches $2|m_{h\chi}^2|$. Hence generally, the constraints on the deviations of the Higgs couplings from the SM, which are sensitive to $\sin \theta$ (see section 3.7), are expected to exclude a larger part of the parameter space than the minimal splitting condition. As we will show in the following, a moderate value of γ_{elem} excludes a significant fraction of the model parameter space at low dilaton masses.

3 Dilaton phenomenology

Let us now write down explicitly all the relevant dilaton couplings to the SM states. To fix the conventions, we parametrise the transformation to the mass eigenstates $\hat{h}, \hat{\chi}$ by

$$\chi = \chi_0 + c_\theta \hat{\chi} - s_\theta \hat{h}, \quad h = v_{\text{CH}} + c_\theta \hat{h} + s_\theta \hat{\chi}, \tag{3.1}$$

where s_θ, c_θ are the sine and cosine of the mixing angle and

$$\sin(v_{\text{CH}}/f) = v_{\text{SM}}/f \tag{3.2}$$

with $v_{\text{SM}} = 246 \text{ GeV}$. The relation in eq. (3.2) is due to the fact that the NGB Higgs enters the Lagrangian in the form of trigonometric functions such that e.g. $m_W = gf \sin(v_{\text{CH}}/f)/2$.

To evaluate the LHC bounds on the dilaton we will use the dilaton couplings and the partial widths detailed below, derived using the arguments presented in the previous section.

3.1 Fermions

For definiteness we will assume the following form for the fermionic mass terms

$$\mathcal{L} \supset -\frac{\lambda_\psi}{\sqrt{2}} (\chi/\chi_0) f \sin(h/f) \bar{\psi} \psi, \tag{3.3}$$

although the trigonometric dependence on the Higgs VEV can take different forms, depending on how the elementary fermions are embedded into the group G . The Yukawa coupling λ_ψ can significantly run with energy in the CFT regime and we define⁵

$$\gamma_\psi = [\partial \log \lambda_\psi / \partial \log \mu]_{\text{CFT}}. \tag{3.4}$$

The expression for fermion-dilaton interactions was derived in section 2.1 and we only make it more precise by adding the terms subleading in v^2/f^2 :

$$\mathcal{L} \supset - \sum_\psi \frac{\lambda_\psi}{\sqrt{2}} \left\{ s_\theta \sqrt{1 - v_{\text{SM}}^2/f^2} + c_\theta (1 + \gamma_\psi) \frac{v_{\text{SM}}}{\chi_0} \right\} \bar{\psi} \psi \hat{\chi} + \text{h.c.} \tag{3.5}$$

$$\equiv - \sum_\psi \frac{\lambda_\psi}{\sqrt{2}} \kappa_\psi^\chi \bar{\psi} \psi \hat{\chi} + \text{h.c.} \tag{3.6}$$

Here the presence of a small v^2/f^2 correction is specific to the NGB Higgs, while the other terms are generically expected for the dilaton interactions. The parameter κ_ψ^χ defined in the last line is the ratio of the dilaton-fermion coupling to the SM Higgs-fermion coupling. The corresponding dilaton decay width at leading order is given by [61]

$$\Gamma_\psi^\chi = (\kappa_\psi^\chi)^2 \frac{N_{c\psi} G_F m_\chi}{4\sqrt{2}\pi} m_\psi^2 \left(1 - 4 \frac{m_\psi^2}{m_\chi^2} \right)^{3/2}, \tag{3.7}$$

where $N_{c\psi} = 1, 3$ for leptons and quarks, respectively, and $G_F = 1/\sqrt{2}v_{\text{SM}}^2$.

3.2 Massive vectors

The mass of the W boson is given by

$$\mathcal{L} \supset \frac{g^2}{4} f^2 \sin^2(h/f) (\chi^2/\chi_0^2) |W_\mu|^2, \tag{3.8}$$

and similarly for the Z . Applying the sequence of derivations from section 2.1 to eq. (3.8) we obtain the dilaton interactions

$$\mathcal{L} \supset 2 \frac{\hat{\chi}}{v_{\text{SM}}} \left\{ s_\theta \sqrt{1 - v_{\text{SM}}^2/f^2} + c_\theta (1 + \gamma_{V^2}) \frac{v_{\text{SM}}}{\chi_0} \right\} \left(m_W^2 |W_\mu|^2 + \frac{1}{2} m_Z^2 Z_\mu^2 \right) \tag{3.9}$$

$$\equiv 2 \frac{\hat{\chi}}{v_{\text{SM}}} \kappa_V^\chi \left(m_W^2 |W_\mu|^2 + \frac{1}{2} m_Z^2 Z_\mu^2 \right), \tag{3.10}$$

where κ_V^χ is the ratio of the dilaton and SM Higgs couplings to massive vectors. The quantity γ_{V^2} parametrises a possible scale-invariance-breaking contribution of the nearly-conformal sector to the renormalisation of the $h^2 W^2$ operator.

Additionally, the kinetic terms of the EW gauge bosons,

$$\mathcal{L} \supset -\frac{1}{4} W_{\mu\nu}^a W^{a\mu\nu} - \frac{1}{4} B_{\mu\nu} B^{\mu\nu}, \tag{3.11}$$

⁵In the simplest case of partial compositeness [60] the Yukawa interactions are proportional to the product of the mass mixing between the composite states with the left- and right-handed elementary fermions, $y_{L,R}$, so that $\gamma_\psi = \gamma_{y_L} + \gamma_{y_R}$.

can also give rise to interactions with the dilaton. To derive them, it is convenient to first switch to non-canonical gauge fields with kinetic terms

$$\mathcal{L} \supset -\frac{1}{4} \frac{1}{g^2} W_{\mu\nu}^a W_{a\mu\nu} \rightarrow -\frac{1}{4} \frac{1}{g^2} \left(1 - 2 \frac{1}{g} \frac{\partial g}{\partial \log \mu} \frac{\delta \mu}{\mu} \right) W_{\mu\nu}^a W^{a\mu\nu}. \quad (3.12)$$

In the second step we expressed the coupling in the first step which is renormalised at some scale μ' as a coupling renormalised at $\mu + \delta\mu$. Next one notices that the renormalisation of the $W_{\mu\nu}^2$ operator is the only contribution to the gauge coupling running $\partial g / \partial \log \mu$ which is sensitive to EW-charged CFT states with masses $\sim \chi$ after confinement. Then the dependence of $W_{\mu\nu}^2$ on the dilaton (unlike e.g. that of the operator in eq. (3.8)) has to be captured by the contribution of these states to the β -function. Setting $\delta\mu$ to $\delta\chi$ and μ to χ_0 , and switching back to canonically normalised fields we obtain

$$\mathcal{L} \supset \frac{1}{2} W_{\mu\nu}^a W_{a\mu\nu} \frac{1}{g} \left[\frac{\partial g}{\partial \log \mu} \right]_{\text{CFT}} \frac{c_\theta \hat{\chi}}{\chi_0}. \quad (3.13)$$

We are interested here in the contribution of the heavy CFT states to the coupling, while the contribution of light states present in our EFT will be evaluated explicitly as loop corrections. The quantity in square brackets is therefore the jump of the β -function induced by the decoupling of EW-charged CFT states which become heavy due to confinement. One expects that this jump is proportional to the number of colors N [62]:

$$[\partial \log g / \partial \log \mu]_{\text{CFT}} \sim N (g^2 / 16\pi^2) = g^2 / g_{\text{mes}}^2. \quad (3.14)$$

However, the change of the running below and above the confinement scale depends on whether some CFT states remain light below that scale. This could happen if some of the SM states (e.g. the right-handed top, the Higgs boson or the longitudinal components of the gauge fields) are completely composite. If these states contribute to the β -function below χ_0 , this contribution has to be subtracted from the r.h.s. of (3.14). The multiplicity of the light states is however not expected to scale with N . Hence in the large- N limit this correction is subdominant. For the following we will define

$$[\partial \log g / \partial \log \mu]_{\text{CFT}} = (c_{WW} - \tilde{c}_{WW} / N) g^2 / g_{\text{mes}}^2. \quad (3.15)$$

The coefficients c_{WW} and \tilde{c}_{WW} can vanish or be of order a few, with \tilde{c}_{WW} corresponding to the subtracted contribution of light composite states discussed above. Analogously, we define the jump of $\beta_{g'} / g'$ determining the coupling to the vector boson B_μ as

$$[\partial \log g' / \partial \log \mu]_{\text{CFT}} = (c_{WW} - \tilde{c}_{BB} / N) g'^2 / g_{\text{mes}}^2. \quad (3.16)$$

With all the discussed interactions included, the dilaton decay widths to on-shell gauge bosons are given by [47]

$$\Gamma_V^\chi = g_* \frac{G_F m_\chi^3}{16\sqrt{2}\pi} \sqrt{1 - 4 \frac{m_V^2}{m_\chi^2} \left((\kappa_V^{\chi^2} + 8\kappa_{VV}^{\chi^2}) - 4(\kappa_V^{\chi^2} + 6\kappa_V^\chi \kappa_{VV}^\chi + 8\kappa_{VV}^{\chi^2}) \frac{m_V^2}{m_\chi^2} + 12(\kappa_V^\chi + 2\kappa_{VV}^\chi)^2 \frac{m_V^4}{m_\chi^4} \right)}, \quad (3.17)$$

where $V = \{Z, W\}$ and $g_* = \{1, 2\}$ respectively. Furthermore, the κ_V^χ are defined in eq. (3.10) and the κ_{VV}^χ follow from the interactions of the type in eq. (3.13) and read

$$\kappa_{WW}^\chi = \frac{1}{2} \frac{c_\theta v_{\text{SM}}}{\chi_0} \frac{g^2}{g_{\text{mes}}^2} c_{WW} \tag{3.18}$$

$$\kappa_{ZZ}^\chi = \frac{1}{2} \frac{c_\theta v_{\text{SM}}}{\chi_0} \left\{ c_w^2 c_{WW} \frac{g^2}{g_{\text{mes}}^2} + s_w^2 c_{BB} \frac{g'^2}{g_{\text{mes}}^2} \right\} \tag{3.19}$$

with s_w, c_w being the sine and cosine of the weak angle respectively. We omitted small corrections due to the SM loops which are not enhanced by the potentially large N and hence are always subdominant compared to the tree-level coupling in eq. (3.9). The same applies to the contributions $\propto \tilde{c}_{BB, WW}$.

3.3 Gluons

The dilaton can acquire couplings to gluons through loop diagrams with quarks in the same way as the Higgs does. The dilaton couplings to the quarks in turn can be simply read off from eq. (3.6). The resulting dilaton decay width is given by

$$\Gamma_g^\chi = \frac{G_F \alpha_s^2 m_\chi^3}{36 \sqrt{2} \pi^3} \left| \sum_q \kappa_q^\chi A_q(\tau_q) \right|^2, \tag{3.20}$$

where $\tau_q = 4m_q^2/m_\chi^2$ and the loop function $A_q(\tau)$, with $A_q(\infty) \rightarrow 1$, is given in ref. [61] and also quoted in appendix A for completeness.

Additionally, interactions between the dilaton and the gluons can be induced by the heavy CFT states. These can be related to the running of the gluon gauge coupling g_s induced by QCD-charged CFT states, analogous to the running of the EW couplings discussed in the previous section. The resulting dilaton coupling is

$$\mathcal{L} \supset \frac{1}{2} \left[\frac{\partial \log g_s}{\partial \log \mu} \right]_{\text{CFT}} G_{\mu\nu}^a G^{a\mu\nu} \frac{c_\theta \hat{\chi}}{\chi_0}, \tag{3.21}$$

where we define $[\partial \log g_s / \partial \log \mu]_{\text{CFT}} \equiv (2/3)(c_{GG} - \tilde{c}_{GG}/N)g_s^2/g_{\text{mes}}^2$ such that for $c_{GG} = 1$ each unit of N contributes to the β -function as a single SM quark flavour. The dilaton decay width can be obtained from the previous result (3.20) by the substitution

$$\sum_q \kappa_q^\chi A_q(\tau_q) \rightarrow \sum_q \kappa_q^\chi A_q(\tau_q) + c_{GG} c_\theta N \frac{v_{\text{SM}}}{\chi_0}, \tag{3.22}$$

where we again neglected \tilde{c}_{GG} . The dilaton-gluon coupling modifier (with respect to the gluon coupling to a SM-like Higgs boson with mass m_χ) is therefore

$$\kappa_g^\chi = \left| \sum_q \kappa_q^\chi A_q^\chi(\tau_q) + c_{GG} c_\theta N \frac{v_{\text{SM}}}{\chi_0} \right| / \left| \sum_q A_q^\chi(\tau_q) \right|. \tag{3.23}$$

3.4 Photons

The situation here is analogous to the case with gluons. The resulting photon contribution to the dilaton decay width can be parametrized as

$$\Gamma_\gamma^\chi = \frac{G_F \alpha^2 m_\chi^3}{128 \sqrt{2} \pi^3} \left| \sum_f \kappa_f^\chi N_{cf} e_f^2 A_f(\tau_f) + \kappa_W^\chi A_W(\tau_W) + c_{\gamma\gamma} c_\theta N \frac{v_{\text{SM}}}{\chi_0} \right|^2, \quad (3.24)$$

where $c_{\gamma\gamma} = (3/4)(c_{WW} + c_{BB})$ corresponds to the size of the heavy new-physics contribution, such that $[\partial \log e / \partial \log \mu]_{\text{CFT}} \equiv (4/3)c_{\gamma\gamma} e^2 / g_{\text{mes}}^2$. The loop functions $A_f(\tau)$ and $A_W(\tau)$ can again be found in appendix A. The dilaton-photon coupling modifier is

$$\kappa_\gamma^\chi = \left| \sum_f \kappa_f^\chi N_{cf} e_f^2 A_f(\tau_f) + \kappa_W^\chi A_W(\tau_W) + c_{\gamma\gamma} c_\theta N \frac{v_{\text{SM}}}{\chi_0} \right| / \left| \sum_f N_{cf} e_f^2 A_f(\tau_f) + A_W(\tau_W) \right|. \quad (3.25)$$

3.5 $Z\gamma$

The SM particles can mediate a $hZ\gamma$ interaction at the one-loop level. Analogously, the dilaton acquires a $\chi Z\gamma$ interaction, whose strength is modified with respect to that of the Higgs due to the modified dilaton couplings to SM fermions and vectors. The width of the one-loop induced dilaton decay into $Z\gamma$ is then given by

$$\Gamma_{Z\gamma}^\chi = \frac{G_F^2 M_W^2 \alpha m_\chi^3}{64 \pi^4} \left(1 - \frac{M_Z^2}{m_\chi^2} \right)^3 \left| \sum_f \kappa_f^\chi A_f[\tau_f, \sigma_f] + \kappa_W^\chi A_W[\tau_W, \sigma_W] \right|^2 \quad (3.26)$$

with $\tau_i = 4m_i^2/m_\chi^2$ and $\sigma_i = 4m_i^2/m_Z^2$. The functions $A_f[\tau, \sigma]$ and $A_W[\tau, \sigma]$ are listed in appendix A.

Additionally, there can be pure CFT contributions to the considered process. The main effect growing with N comes from the renormalisation of the couplings g and g' which generate the operator

$$\mathcal{L} \supset \frac{c_\theta \hat{\chi}}{\chi_0} s_w c_w \left\{ c_{WW} \frac{g^2}{g_{\text{mes}}^2} - c_{BB} \frac{g'^2}{g_{\text{mes}}^2} \right\} Z_{\mu\nu} \gamma^{\mu\nu}. \quad (3.27)$$

To incorporate the corresponding contribution into the decay width (3.26) one should perform a shift [63]

$$\sum_f \kappa_f^\chi A_f^\chi[\tau_f, \sigma_f] + \kappa_W^\chi A_W^\chi[\tau_W, \sigma_W] \rightarrow \sum_f \kappa_f^\chi A_f^\chi[\tau_f, \sigma_f] + \kappa_W^\chi A_W^\chi[\tau_W, \sigma_W] - \kappa_{Z\gamma}^\chi, \quad (3.28)$$

where

$$\kappa_{Z\gamma}^\chi = \frac{16\pi^2}{g_{\text{mes}}^2} \frac{c_\theta v_{\text{SM}}}{\chi_0} s_w \{ (c_w/s_w) c_{WW} - (s_w/c_w) c_{BB} \}. \quad (3.29)$$

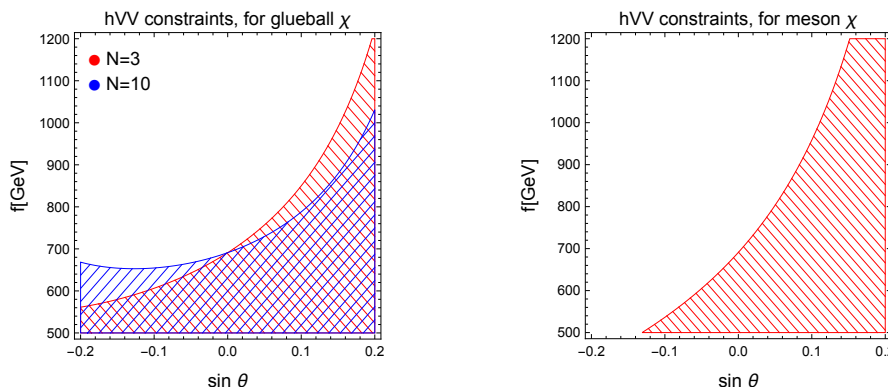


Figure 1. Current bounds on the dilaton-Higgs mixing angle and f derived from the Higgs-EW vector boson coupling measurements.

3.6 Higgs

The relevant Higgs-dilaton interactions are given by (neglecting possible scale-invariance breaking)

$$\mathcal{L} \supset - \left(2 \frac{m_h^2}{\chi_0} \right) \hat{\chi} \hat{h}^2 \equiv a_{h\chi} \hat{\chi} \hat{h}^2, \quad (3.30)$$

and contribute to the dilaton decay width with

$$\Gamma_h^\chi = \frac{a_{h\chi}^2}{8\pi m_\chi} \left(1 - 4 \frac{m_h^2}{m_\chi^2} \right)^{1/2} \Theta(m_\chi - 2m_h). \quad (3.31)$$

3.7 Higgs-coupling modifications

For completeness we should mention that the dilaton-Higgs mixing angle which affects the dilaton phenomenology can be constrained from Higgs physics, although we will not analyse that in this work in much detail. The least model-dependent constraint along these lines comes from the modification of the Higgs couplings to the EW gauge bosons. The corresponding coupling modifier with respect to the SM prediction reads

$$\kappa_V^h = c_\theta \cos \frac{v_{\text{CH}}}{f} - s_\theta \frac{g_\chi}{g_*} (1 + \gamma_{V^2}) \sin \frac{v_{\text{CH}}}{f}, \quad (3.32)$$

which can be derived from the expression for the W mass (3.8). In the limit of $g_\chi = g_*$ and $\gamma_{V^2} = 0$ this expression simplifies to

$$\kappa_V^h = \cos \left(\theta + \frac{v_{\text{CH}}}{f} \right). \quad (3.33)$$

Therefore, if θ is negative, it can compensate the Higgs coupling distortion introduced by non-zero v/f , thus bringing the couplings closer to their SM values. On the other hand, the result (3.32) can be interpreted as the possibility to access the degree of conformal-invariance breaking in the UV by measuring the Higgs couplings. Using the currently available constraints on the Higgs-vector boson coupling modifications from direct measurements [73, 74] we present the 2σ bounds on the Higgs-dilaton mixing angle and the scale f in figure 1, for $\gamma_{V^2} = 0$ and $c_{h\chi} = 1$. Note that $\sin \theta$ and f can also be constrained from other measurements, whose detailed analysis would however bring us outside the scope of this paper.

4 Collider bounds

In this section, we present the current 95%CL LHC exclusion limits for the parameter space of the dilaton EFT, as well as the projected future HL-LHC sensitivity. We derive the bounds using HiggsTools and related software packages [64–67]. The expected signal is computed by rescaling the corresponding production cross-sections and partial decay widths of the SM Higgs boson with the κ_i parameters defined in the previous section. For masses above $m_\chi = 1$ TeV we use a custom leading-order evaluation of the partial dilaton decay widths. The estimated future 3 ab^{-1} HL-LHC sensitivity is obtained from the 13 TeV LHC analyses by rescaling the sensitivities with a square root of the corresponding luminosity ratios. Some of the currently most sensitive experimental analyses include [68–72], searching for heavy resonances produced in gluon fusion or vector boson fusion, and decaying into pairs of on- or off-shell EW vector bosons.

Let us now discuss the sensitivity of the dilaton collider phenomenology to the parameters discussed in the previous sections, and the resulting experimental bounds on them.

- The overall size of the dilaton couplings is set by the scale of conformal symmetry breaking χ_0 , and the Higgs decay constant f , which are related via eq. (2.18). While the experimental data provides lower bounds on f , EW scale naturalness pushes f downwards. Hence expressing the bounds in terms of f allows to estimate the degree of naturalness of the surviving region in parameter space. The bounds on f and m_χ are shown in figure 2, for different choices of other relevant parameters which are discussed below. The ratio of f and χ_0 depends on the order-one parameter $c_{h\chi}$. To estimate the associated uncertainty we show in figure 4 how the experimental bounds change as $c_{h\chi}$ varies in the range $[1/2, 2]$. The scaling of the bounds with $c_{h\chi}$ is discussed around eqs. (4.1) and (4.2) below.
- The effective number of colors N of the underlying new strong dynamics can *a priori* vary in a large range and plays a crucial role for the collider phenomenology. In particular, N suppresses the overall scale of the couplings for a glueball-like dilaton $\propto 1/\chi_0 \propto 1/\sqrt{N}$ and, at the same time, enhances the dilaton coupling to gluons $\propto c_{gg}N$. The latter coupling determines the dominant dilaton production channel via gluon fusion (while the main decay channels are $\chi \rightarrow WW, ZZ$). The dependence of the bounds on c_{gg} and N is demonstrated in figure 2. As one can see, for non-zero c_{gg} the experimental sensitivity to the dilaton grows significantly with N . In fact, the production cross-section from gluon fusion scales approximately as

$$\sigma_{gg} \propto (c_{gg}N/\chi_0)^2 \propto \frac{1}{f^2} \frac{c_{gg}^2}{c_{h\chi}^2} \times \begin{cases} N & \text{for glueball-like dilaton} \\ N^2 & \text{for meson-like dilaton.} \end{cases} \quad (4.1)$$

For vanishing c_{gg} instead, dilaton production from gluon or vector boson fusion is mostly determined by the coupling to the top quark and the EW gauge bosons respectively. At zero mixing these couplings scale as $\propto 1/\chi_0$ and hence the overall

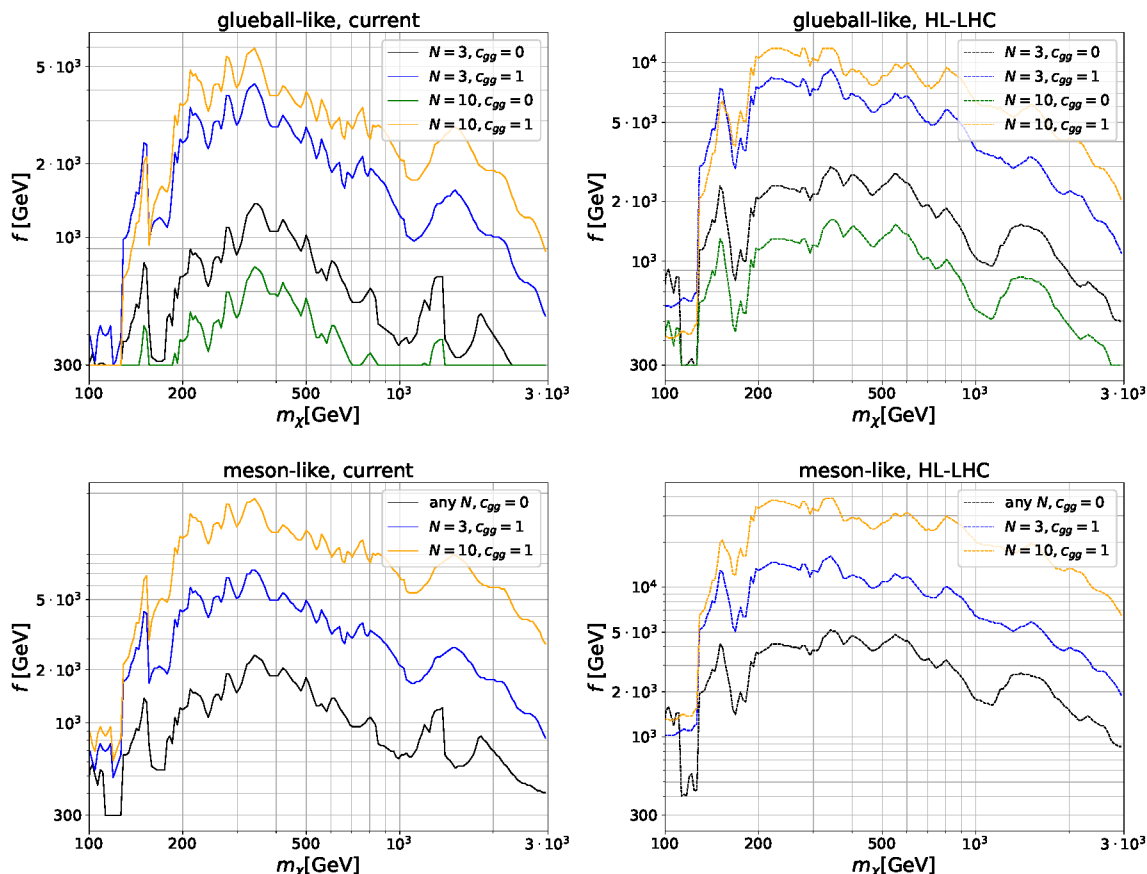


Figure 2. Current collider lower bounds on f (left panel) and future sensitivity (right panel) as a function of the dilaton mass m_χ for a glueball- and meson-like dilaton, and for different choices of c_{gg} and N as specified in the plots. The other parameters are chosen as $c_{h\chi} = 1$, $s_\theta = 0$, $\gamma_i = 0$, $c_{WW} = c_{BB} = 0$.

production cross-section has the following N -dependence:

$$\sigma_{gg,VBF}|_{c_{gg}=0} \propto (1/\chi_0)^2 \propto \frac{1}{f^2} \frac{1}{c_{h\chi}^2} \times \begin{cases} \frac{1}{N} & \text{for glueball-like dilaton} \\ 1 & \text{for meson-like dilaton.} \end{cases} \quad (4.2)$$

A meson-like dilaton is therefore typically more constrained than one that is glueball-like. This can be seen in figure 3, where we show the experimental bounds in terms of N and m_χ for a fixed value of f .

- The Higgs-dilaton mixing s_θ arises from operators which contain both Higgs-shift-symmetry and conformal-symmetry breaking parameters. The sources of this breaking are model-dependent. Since the current Higgs-coupling bounds prefer a SM-like Higgs [73, 74], we have set the mixing to zero for most of the plots, which allows to satisfy the bounds for all $f \gtrsim 800$ GeV (see figure 1). To estimate the importance of the mixing for the dilaton collider bounds we present in figure 5 a comparison of the bounds derived for $s_\theta = 0, \pm 0.05$.

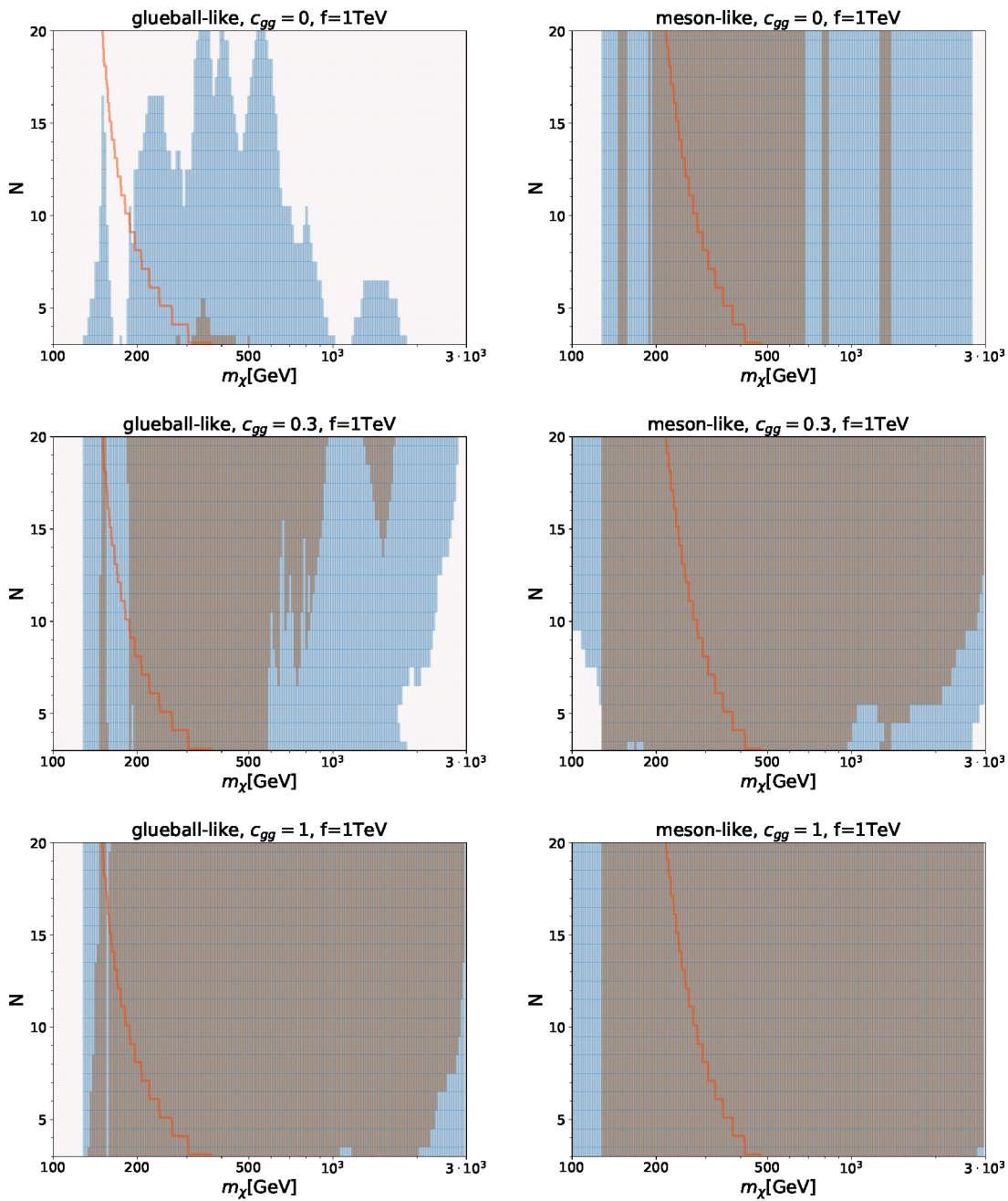


Figure 3. Currently excluded regions (brown) and future sensitivities (blue) in terms of the dilaton mass m_χ and N , for $c_{gg} = \{0, 0.3, 1\}$, $f = 1\text{ TeV}$, $c_{h\chi} = 1$, $s_\theta = 0$, $\gamma_i = 0$, and $c_{WW} = c_{BB} = 0$. Red lines indicate the right edge of the region around $m_\chi = m_h$ excluded by the minimal mass splitting condition (2.22), with $\gamma_{\text{elem}} = 0.1$. For $\gamma_{\text{elem}} = 0$ the mass splitting condition only cuts out a thin region around $m_\chi = m_h$.

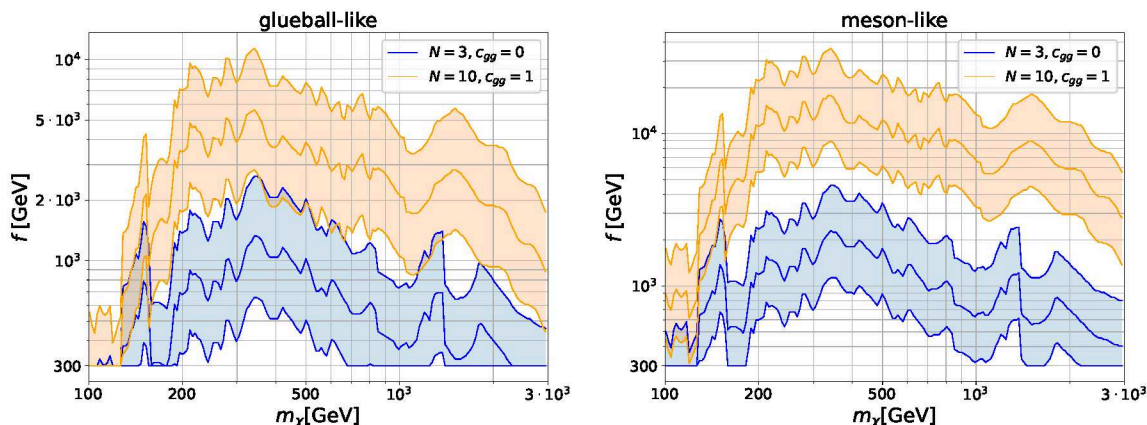


Figure 4. Dependence of the currently excluded f on $c_{h\chi}$ varying between $1/2$ and 2 . The upper (lower) band limits correspond to $c_{h\chi} = 1/2$ (2), the central lines correspond to $c_{h\chi} = 1$. The values of c_{gg} and N are specified in the plots, the other parameters are chosen as $s_\theta = 0$, $\gamma_i = 0$, $c_{WW} = c_{BB} = 0$.

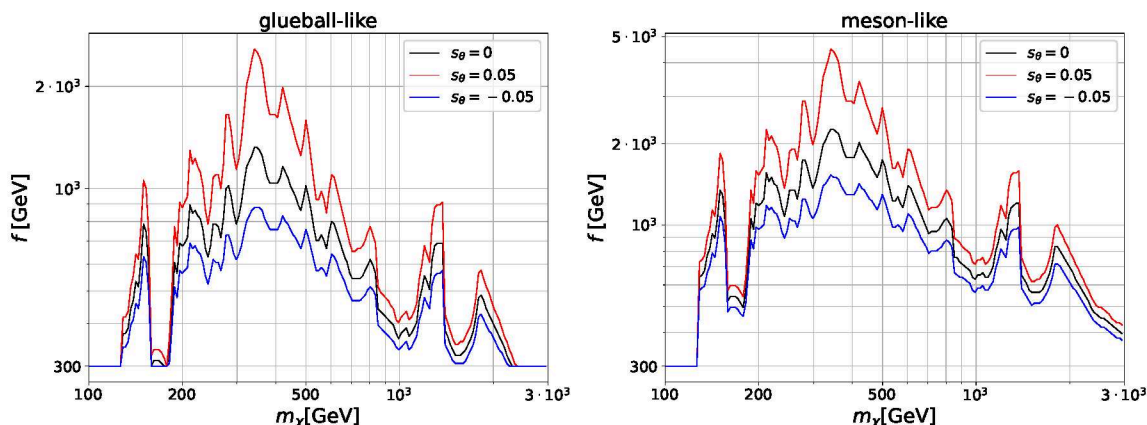


Figure 5. Dependence of the currently excluded f on the Higgs-dilaton mixing angle s_θ , for $s_\theta = 0, \pm 0.05$. The other parameters are chosen as $c_{h\chi} = 1$, $c_{gg} = 0$, $N = 3$, $\gamma_i = 0$, $c_{WW} = c_{BB} = 0$.

- Regarding the order-one parameters c_{gg} , c_{WW} , c_{BB} , the latter two have a very mild impact on the collider sensitivity and we will set them to zero. The former, instead, can play an important role due to its effect on the coupling to gluons, as was discussed above. The dependence on c_{gg} is demonstrated in figures 2, 3, 4.
- The parameters $\gamma_\psi, \gamma_{V^2}$ which reflect the scale-invariance breaking in various couplings were set to zero in our analysis as they are model-dependent. Among them, the most important one is the parameter γ_t , whose order-one value could affect the dilaton-top coupling, and hence the dilaton coupling to gluons, modifying the overall production rate. This effect is more sizeable for low $c_{gg}N$, since otherwise the latter contribution dominates the coupling to gluons. This is illustrated in figure 6.

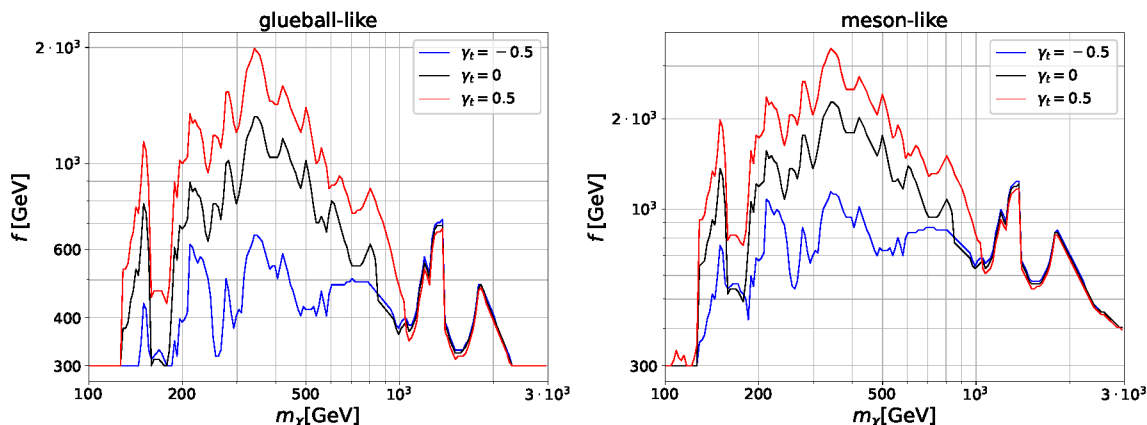


Figure 6. Dependence of the currently excluded f on γ_t , for $\gamma_t = 0, \pm 0.5$, for a glueball-like (left panel) and a meson-like (right panel) dilaton. The remaining parameter values are chosen as $c_{h\chi} = 1$, $c_{gg} = 0$, $N = 3$, $s_\theta = 0$, $\gamma_i = 0$, $c_{WW} = c_{BB} = 0$.

5 Discussion

The existence of a $\mathcal{O}(100 \text{ GeV}) - \mathcal{O}(1 \text{ TeV})$ scale dilaton was predicted in numerous extensions of the SM, and in particular in models with Higgs boson compositeness. In this work, we have presented an update of the collider bounds on a composite dilaton with mass $\gtrsim 100 \text{ GeV}$, as well as the projected sensitivity of the HL-LHC. We have assumed the dilaton to be the lightest new state, decaying exclusively to SM particles. To model the dilaton properties we have used a 4D EFT approach, being able to capture a broad range of possible UV-completions, while still allowing to put important restrictions on the dilaton interactions.

We have adopted a perspective on the dilaton phenomenology motivated by EW scale naturalness, relating the dilaton couplings to the Higgs decay constant f (which for the least tuned models currently lies within about 1 TeV), and the number of colors N of the underlying new strong interactions producing the composite Higgs and dilaton. Important relations to understand the constraints are eqs. (2.18), (4.1) and (4.2). In particular, the non-trivial relation between the meson and glueball VEVs implies that a large scale χ_0 suppressing the dilaton couplings can only be achieved at the price of large N . At the same time, this large N is expected to enhance the dilaton couplings to gluons, increasing the resulting signal. As a result, at fixed $f \lesssim 1 \text{ TeV}$, one expects sizeable collider signals for a glueball-like dilaton even at large χ_0 .

The above line of arguments is only valid for non-zero values of the coefficient c_{gg} controlling the CFT contribution to the QCD β -function and thus the dilaton coupling to gluons. However, having a non-vanishing c_{gg} appears to be a rather generic assumption, since the CFT constituents have to be charged under QCD in order to generate at least the top quark mass via the partial compositeness mechanism, which requires QCD-charged composite operators coupling to the top quark.

Finally, in the hypothetical case of a meson-like dilaton, the scale controlling the dilaton interactions is rigidly connected to f and does not grow with N . Hence, the experimental sensitivity in this case is much stronger than in the glueball scenario.

This motivates LHC searches for a heavy dilaton. The main production channel benefiting from the mentioned parametric dependence is $gg \rightarrow \chi$, followed by decays to the EW gauge bosons. As we have shown, a dilaton with mass up to a few TeV can be observed or constrained at future LHC runs. On the other hand, the current experimental data already excludes a significant fraction of the parameter space for a composite dilaton, advancing well into the TeV mass region. In particular, the obtained bounds are of special relevance for models of electroweak baryogenesis [16–18], even in realisations where the temperature of the electroweak phase transition is enhanced [75–79], which rely on the presence of a $\mathcal{O}(100 \text{ GeV}) - \mathcal{O}(1 \text{ TeV})$ scale dilaton. At the same time, the window of a light dilaton with a mass $\lesssim 200 \text{ GeV}$ remains only weakly constrained, with the latest ATLAS and CMS analyses concentrating on heavier masses. Although a fraction of this window can be excluded if large Higgs-dilaton mixing is generated (see figure 3), in general it represents a theoretically-acceptable region of parameter space and would require a dedicated effort to be probed experimentally.

Finally, the analysed connection between the Higgs and the dilaton scales provides a handle to assess the implications of dilaton searches on EW scale naturalness. In the considered benchmark scenarios the current exclusion limits and the future sensitivity reach respectively 5 TeV and 10 TeV in the Higgs decay constant f , corresponding to a $\sim 10^{-4}$ level of fine-tuning. This sensitivity, although being model-dependent, can exceed the sensitivity provided by the measurements of the couplings of SM particles at the HL-LHC and next generation lepton colliders [80, 81]. Although, simplistically comparing the dilaton production cross section which scales as $\propto 1/f^2$ with the SM-coupling deviations induced by compositeness $\propto 1/f^2$, we find them to be of the same parametric form, the dilaton signal profits from the N -enhancement of the gluon fusion cross-section. Thus dilaton searches can complement the program of Higgs compositeness tests, including such directions as the searches for composite top partners [82–84], precision tests of SM particle interactions [53, 85, 86], and searches for other types of light spin-zero composite states [87–90]. In case a new light boson is discovered, the dilaton coupling patterns analysed in this paper as well as the patterns predicted for other types of composite resonances [87, 88] would provide a useful guide for understanding the origin of such a state.

Acknowledgments

We thank Miki Chala for early discussions on this topic a few years ago. OM is supported by STFC HEP Theory Consolidated grant ST/T000694/1. OM also thanks the Mainz Institute for Theoretical Physics (MITP) and ICTP-SAIFR for their hospitality and support during the completion of this work. The work of SB has been supported by the German Research Foundation (DFG) under grant no. 396021762-TRR 257. This work is supported by the Deutsche Forschungsgemeinschaft under Germany Excellence Strategy — EXC 2121 “Quantum Universe” — 390833306.

A Loop functions

In this appendix we list the loop functions presented in ref. [61]:

$$A_q(\tau) = \frac{3}{2}\tau(1 + (1 - \tau)f(\tau)) \quad (\text{A.1})$$

$$A_f(\tau) = 2\tau(1 + (1 - \tau)f(\tau)) \quad (\text{A.2})$$

$$A_W(\tau) = -(2 + 3\tau + 3\tau(2 - \tau)f(\tau)) \quad (\text{A.3})$$

$$A_f(\tau, \lambda) = 2N_{cf} \frac{e_f(I_{3f} - 2e_f s_w^2)}{c_w} (I_1(\tau, \lambda) - I_2(\tau, \lambda)) \quad (\text{A.4})$$

$$A_W(\tau, \lambda) = c_w(4(3 - t_w^2)I_2(\tau, \lambda) + ((1 + 2/\tau)t_w^2 - (5 + 2/\tau))I_1(\tau, \lambda)) \quad (\text{A.5})$$

$$I_1(\tau, \lambda) = \frac{\tau\lambda}{2(\tau - \lambda)} + \frac{\tau^2\lambda^2}{2(\tau - \lambda)^2}(f(\tau) - f(\lambda)) + \frac{\tau^2\lambda}{(\tau - \lambda)^2}(g(\tau) - g(\lambda)) \quad (\text{A.6})$$

$$I_2(\tau, \lambda) = -\frac{\tau\lambda}{2(\tau - \lambda)}(f(\tau) - f(\lambda)). \quad (\text{A.7})$$

Here $t_w = s_w/c_w$, e_f is the electric charge and I_{3f} the third electroweak isospin component of the corresponding fermion. Furthermore,

$$f(\tau) = \begin{cases} \arcsin^2 \frac{1}{\sqrt{\tau}} & \tau \geq 1 \\ -\frac{1}{4} \left(\log \frac{1+\sqrt{1-\tau}}{1-\sqrt{1-\tau}} - i\pi \right)^2 & \tau < 1 \end{cases} \quad (\text{A.8})$$

$$g(\tau) = \begin{cases} \sqrt{\tau - 1} \arcsin \frac{1}{\sqrt{\tau}} & \tau \geq 1 \\ \frac{\sqrt{1-\tau}}{2} \left(\log \frac{1+\sqrt{1-\tau}}{1-\sqrt{1-\tau}} - i\pi \right) & \tau < 1. \end{cases} \quad (\text{A.9})$$

Open Access. This article is distributed under the terms of the Creative Commons Attribution License ([CC-BY 4.0](https://creativecommons.org/licenses/by/4.0/)), which permits any use, distribution and reproduction in any medium, provided the original author(s) and source are credited. SCOAP³ supports the goals of the International Year of Basic Sciences for Sustainable Development.

References

- [1] R. Rattazzi and A. Zaffaroni, *Comments on the holographic picture of the Randall-Sundrum model*, *JHEP* **04** (2001) 021 [[hep-th/0012248](https://arxiv.org/abs/hep-th/0012248)] [[INSPIRE](https://inspirehep.net/literature/52068)].
- [2] K. Blum, M. Cliche, C. Csaki and S.J. Lee, *WIMP Dark Matter through the Dilaton Portal*, *JHEP* **03** (2015) 099 [[arXiv:1410.1873](https://arxiv.org/abs/1410.1873)] [[INSPIRE](https://inspirehep.net/literature/125202)].
- [3] M. Kim, S.J. Lee and A. Parolini, *WIMP Dark Matter in Composite Higgs Models and the Dilaton Portal*, [arXiv:1602.05590](https://arxiv.org/abs/1602.05590) [[INSPIRE](https://inspirehep.net/literature/1400000)].
- [4] I. Baldes, Y. Gouttenoire, F. Sala and G. Servant, *Supercool composite Dark Matter beyond 100 TeV*, *JHEP* **07** (2022) 084 [[arXiv:2110.13926](https://arxiv.org/abs/2110.13926)] [[INSPIRE](https://inspirehep.net/literature/196810)].
- [5] P. Creminelli, A. Nicolis and R. Rattazzi, *Holography and the electroweak phase transition*, *JHEP* **03** (2002) 051 [[hep-th/0107141](https://arxiv.org/abs/hep-th/0107141)] [[INSPIRE](https://inspirehep.net/literature/57083)].
- [6] T. Konstandin and G. Servant, *Cosmological Consequences of Nearly Conformal Dynamics at the TeV scale*, *JCAP* **12** (2011) 009 [[arXiv:1104.4791](https://arxiv.org/abs/1104.4791)] [[INSPIRE](https://inspirehep.net/literature/97000)].

- [7] A. Azatov and M. Vanvlasselaer, *Phase transitions in perturbative walking dynamics*, *JHEP* **09** (2020) 085 [[arXiv:2003.10265](#)] [[INSPIRE](#)].
- [8] L. Randall and G. Servant, *Gravitational waves from warped spacetime*, *JHEP* **05** (2007) 054 [[hep-ph/0607158](#)] [[INSPIRE](#)].
- [9] T. Konstandin and G. Servant, *Natural Cold Baryogenesis from Strongly Interacting Electroweak Symmetry Breaking*, *JCAP* **07** (2011) 024 [[arXiv:1104.4793](#)] [[INSPIRE](#)].
- [10] G. Servant, *Baryogenesis from Strong CP Violation and the QCD Axion*, *Phys. Rev. Lett.* **113** (2014) 171803 [[arXiv:1407.0030](#)] [[INSPIRE](#)].
- [11] B. von Harling and G. Servant, *QCD-induced Electroweak Phase Transition*, *JHEP* **01** (2018) 159 [[arXiv:1711.11554](#)] [[INSPIRE](#)].
- [12] P. Baratella, A. Pomarol and F. Rompineve, *The Supercooled Universe*, *JHEP* **03** (2019) 100 [[arXiv:1812.06996](#)] [[INSPIRE](#)].
- [13] G. Nardini, M. Quiros and A. Wulzer, *A Confining Strong First-Order Electroweak Phase Transition*, *JHEP* **09** (2007) 077 [[arXiv:0706.3388](#)] [[INSPIRE](#)].
- [14] I. Baldes, Y. Gouttenoire and F. Sala, *String Fragmentation in Supercooled Confinement and Implications for Dark Matter*, *JHEP* **04** (2021) 278 [[arXiv:2007.08440](#)] [[INSPIRE](#)].
- [15] B. von Harling and G. Servant, *Cosmological evolution of Yukawa couplings: the 5D perspective*, *JHEP* **05** (2017) 077 [[arXiv:1612.02447](#)] [[INSPIRE](#)].
- [16] S. Bruggisser, B. Von Harling, O. Matsedonskyi and G. Servant, *Baryon Asymmetry from a Composite Higgs Boson*, *Phys. Rev. Lett.* **121** (2018) 131801 [[arXiv:1803.08546](#)] [[INSPIRE](#)].
- [17] S. Bruggisser, B. Von Harling, O. Matsedonskyi and G. Servant, *Electroweak Phase Transition and Baryogenesis in Composite Higgs Models*, *JHEP* **12** (2018) 099 [[arXiv:1804.07314](#)] [[INSPIRE](#)].
- [18] S. Bruggisser, B. von Harling, O. Matsedonskyi and G. Servant, *Status of Electroweak Baryogenesis in Minimal Composite Higgs*, [arXiv:2212.11953](#) [[INSPIRE](#)].
- [19] R. Contino, A. Pomarol and R. Rattazzi, unpublished work.
- [20] E. Megias and O. Pujolas, *Naturally light dilatons from nearly marginal deformations*, *JHEP* **08** (2014) 081 [[arXiv:1401.4998](#)] [[INSPIRE](#)].
- [21] F. Coradeschi et al., *A naturally light dilaton*, *JHEP* **11** (2013) 057 [[arXiv:1306.4601](#)] [[INSPIRE](#)].
- [22] B. Bellazzini et al., *A Naturally Light Dilaton and a Small Cosmological Constant*, *Eur. Phys. J. C* **74** (2014) 2790 [[arXiv:1305.3919](#)] [[INSPIRE](#)].
- [23] A. Pomarol, O. Pujolas and L. Salas, *Holographic conformal transition and light scalars*, *JHEP* **10** (2019) 202 [[arXiv:1905.02653](#)] [[INSPIRE](#)].
- [24] LATTICE STRONG DYNAMICS collaboration, *Nonperturbative investigations of SU(3) gauge theory with eight dynamical flavors*, *Phys. Rev. D* **99** (2019) 014509 [[arXiv:1807.08411](#)] [[INSPIRE](#)].
- [25] LATKMI collaboration, *Light flavor-singlet scalars and walking signals in $N_f = 8$ QCD on the lattice*, *Phys. Rev. D* **96** (2017) 014508 [[arXiv:1610.07011](#)] [[INSPIRE](#)].
- [26] C. Csaki, J. Hubisz and S.J. Lee, *Radion phenomenology in realistic warped space models*, *Phys. Rev. D* **76** (2007) 125015 [[arXiv:0705.3844](#)] [[INSPIRE](#)].

- [27] R. Foot, A. Kobakhidze and R.R. Volkas, *Electroweak Higgs as a pseudo-Goldstone boson of broken scale invariance*, *Phys. Lett. B* **655** (2007) 156 [[arXiv:0704.1165](#)] [[INSPIRE](#)].
- [28] W.D. Goldberger, B. Grinstein and W. Skiba, *Distinguishing the Higgs boson from the dilaton at the Large Hadron Collider*, *Phys. Rev. Lett.* **100** (2008) 111802 [[arXiv:0708.1463](#)] [[INSPIRE](#)].
- [29] J.J. Fan, W.D. Goldberger, A. Ross and W. Skiba, *Standard Model couplings and collider signatures of a light scalar*, *Phys. Rev. D* **79** (2009) 035017 [[arXiv:0803.2040](#)] [[INSPIRE](#)].
- [30] L. Vecchi, *Phenomenology of a light scalar: the dilaton*, *Phys. Rev. D* **82** (2010) 076009 [[arXiv:1002.1721](#)] [[INSPIRE](#)].
- [31] T. Appelquist and Y. Bai, *A Light Dilaton in Walking Gauge Theories*, *Phys. Rev. D* **82** (2010) 071701 [[arXiv:1006.4375](#)] [[INSPIRE](#)].
- [32] T. Hur and P. Ko, *Scale invariant extension of the standard model with strongly interacting hidden sector*, *Phys. Rev. Lett.* **106** (2011) 141802 [[arXiv:1103.2571](#)] [[INSPIRE](#)].
- [33] V. Barger, M. Ishida and W.-Y. Keung, *Dilaton at the LHC*, *Phys. Rev. D* **85** (2012) 015024 [[arXiv:1111.2580](#)] [[INSPIRE](#)].
- [34] V. Barger, M. Ishida and W.-Y. Keung, *Differentiating the Higgs boson from the dilaton and the radion at hadron colliders*, *Phys. Rev. Lett.* **108** (2012) 101802 [[arXiv:1111.4473](#)] [[INSPIRE](#)].
- [35] Z. Chacko, R. Franceschini and R.K. Mishra, *Resonance at 125 GeV: Higgs or Dilaton/Radion?*, *JHEP* **04** (2013) 015 [[arXiv:1209.3259](#)] [[INSPIRE](#)].
- [36] T. Abe et al., *Minimal Dilaton Model*, *Phys. Rev. D* **86** (2012) 115016 [[arXiv:1209.4544](#)] [[INSPIRE](#)].
- [37] C. Coriano, L. Delle Rose, A. Quintavalle and M. Serino, *Dilaton interactions and the anomalous breaking of scale invariance of the Standard Model*, *JHEP* **06** (2013) 077 [[arXiv:1206.0590](#)] [[INSPIRE](#)].
- [38] B. Bellazzini et al., *A Higgslike Dilaton*, *Eur. Phys. J. C* **73** (2013) 2333 [[arXiv:1209.3299](#)] [[INSPIRE](#)].
- [39] P. Cox, A.D. Medina, T.S. Ray and A. Spray, *Radion/Dilaton-Higgs Mixing Phenomenology in Light of the LHC*, *JHEP* **02** (2014) 032 [[arXiv:1311.3663](#)] [[INSPIRE](#)].
- [40] J. Cao et al., *Higgs Phenomenology in the Minimal Dilaton Model after Run I of the LHC*, *JHEP* **01** (2014) 150 [[arXiv:1311.6661](#)] [[INSPIRE](#)].
- [41] D.-W. Jung and P. Ko, *Higgs-dilaton(radion) system confronting the LHC Higgs data*, *Phys. Lett. B* **732** (2014) 364 [[arXiv:1401.5586](#)] [[INSPIRE](#)].
- [42] A. Ahmed et al., *Implications of the absence of high-mass radion signals*, *Phys. Rev. D* **95** (2017) 095019 [[arXiv:1512.05771](#)] [[INSPIRE](#)].
- [43] B. Bellazzini, R. Franceschini, F. Sala and J. Serra, *Goldstones in Diphotons*, *JHEP* **04** (2016) 072 [[arXiv:1512.05330](#)] [[INSPIRE](#)].
- [44] P. Bandyopadhyay, C. Coriano, A. Costantini and L. Delle Rose, *Bounds on the Conformal Scale of a Minimally Coupled Dilaton and Multi-Leptonic Signatures at the LHC*, *JHEP* **09** (2016) 084 [[arXiv:1607.01933](#)] [[INSPIRE](#)].
- [45] F. Abu-Ajamieh, J.S. Lee and J. Terning, *The Light Radion Window*, *JHEP* **10** (2018) 050 [[arXiv:1711.02697](#)] [[INSPIRE](#)].

- [46] A. Chakraborty, U. Maitra, S. Raychaudhuri and T. Samui, *Mixed Higgs-radion states at the LHC — a detailed study*, *Nucl. Phys. B* **922** (2017) 41 [[arXiv:1701.07471](#)] [[INSPIRE](#)].
- [47] A. Ahmed, A. Mariotti and S. Najjari, *A light dilaton at the LHC*, *JHEP* **05** (2020) 093 [[arXiv:1912.06645](#)] [[INSPIRE](#)].
- [48] D. Sachdeva and S. Sadhukhan, *Discussing 125 GeV and 95 GeV excess in light radion model*, *Phys. Rev. D* **101** (2020) 055045 [[arXiv:1908.01668](#)] [[INSPIRE](#)].
- [49] G. Panico and A. Wulzer, *The Composite Nambu-Goldstone Higgs*, Springer (2016) [[DOI:10.1007/978-3-319-22617-0](#)] [[INSPIRE](#)].
- [50] R. Contino, *The Higgs as a Composite Nambu-Goldstone Boson*, in the proceedings of the *Theoretical Advanced Study Institute in Elementary Particle Physics: Physics of the Large and the Small*, Boulder, Colorado, U.S.A., 1-26 June 2009, p. 235–306 [[DOI:10.1142/9789814327183_0005](#)] [[arXiv:1005.4269](#)] [[INSPIRE](#)].
- [51] Z. Chacko and R.K. Mishra, *Effective Theory of a Light Dilaton*, *Phys. Rev. D* **87** (2013) 115006 [[arXiv:1209.3022](#)] [[INSPIRE](#)].
- [52] K. Agashe, R. Contino and A. Pomarol, *The minimal composite Higgs model*, *Nucl. Phys. B* **719** (2005) 165 [[hep-ph/0412089](#)] [[INSPIRE](#)].
- [53] C. Grojean, O. Matsedonskyi and G. Panico, *Light top partners and precision physics*, *JHEP* **10** (2013) 160 [[arXiv:1306.4655](#)] [[INSPIRE](#)].
- [54] O. Matsedonskyi, G. Panico and A. Wulzer, *Light Top Partners for a Light Composite Higgs*, *JHEP* **01** (2013) 164 [[arXiv:1204.6333](#)] [[INSPIRE](#)].
- [55] G. Durieux, M. McCullough and E. Salvioni, *Gegenbauer Goldstones*, *JHEP* **01** (2022) 076 [[arXiv:2110.06941](#)] [[INSPIRE](#)].
- [56] E. Witten, *Baryons in the $1/n$ Expansion*, *Nucl. Phys. B* **160** (1979) 57 [[INSPIRE](#)].
- [57] R. Contino, Y. Nomura and A. Pomarol, *Higgs as a holographic pseudoGoldstone boson*, *Nucl. Phys. B* **671** (2003) 148 [[hep-ph/0306259](#)] [[INSPIRE](#)].
- [58] T. Sakai and S. Sugimoto, *Low energy hadron physics in holographic QCD*, *Prog. Theor. Phys.* **113** (2005) 843 [[hep-th/0412141](#)] [[INSPIRE](#)].
- [59] E. Fuchs, O. Matsedonskyi, I. Savoray and M. Schlaffer, *Collider searches for scalar singlets across lifetimes*, *JHEP* **04** (2021) 019 [[arXiv:2008.12773](#)] [[INSPIRE](#)].
- [60] D.B. Kaplan, *Flavor at SSC energies: A new mechanism for dynamically generated fermion masses*, *Nucl. Phys. B* **365** (1991) 259 [[INSPIRE](#)].
- [61] M. Spira, *Higgs Boson Production and Decay at Hadron Colliders*, *Prog. Part. Nucl. Phys.* **95** (2017) 98 [[arXiv:1612.07651](#)] [[INSPIRE](#)].
- [62] J. Garriga and A. Pomarol, *A stable hierarchy from Casimir forces and the holographic interpretation*, *Phys. Lett. B* **560** (2003) 91 [[hep-th/0212227](#)] [[INSPIRE](#)].
- [63] S. Dawson and P.P. Giardino, *Higgs decays to ZZ and $Z\gamma$ in the standard model effective field theory: An NLO analysis*, *Phys. Rev. D* **97** (2018) 093003 [[arXiv:1801.01136](#)] [[INSPIRE](#)].
- [64] A. Djouadi, J. Kalinowski, M. Muehlleitner and M. Spira, *HDECAY: Twenty₊₊ years after*, *Comput. Phys. Commun.* **238** (2019) 214 [[arXiv:1801.09506](#)] [[INSPIRE](#)].
- [65] P. Bechtle et al., *HiggsBounds-5: Testing Higgs Sectors in the LHC 13 TeV Era*, *Eur. Phys. J. C* **80** (2020) 1211 [[arXiv:2006.06007](#)] [[INSPIRE](#)].

- [66] P. Bechtle et al., *HiggsSignals-2: Probing new physics with precision Higgs measurements in the LHC 13 TeV era*, *Eur. Phys. J. C* **81** (2021) 145 [[arXiv:2012.09197](#)] [[INSPIRE](#)].
- [67] H. Bahl et al., *HiggsTools: BSM scalar phenomenology with new versions of HiggsBounds and HiggsSignals*, [arXiv:2210.09332](#) [[INSPIRE](#)].
- [68] ATLAS collaboration, *Search for heavy resonances decaying into a pair of Z bosons in the $\ell^+\ell^-\ell'^+\ell'^-$ and $\ell^+\ell^-\nu\bar{\nu}$ final states using 139 fb^{-1} of proton-proton collisions at $\sqrt{s} = 13\text{ TeV}$ with the ATLAS detector*, *Eur. Phys. J. C* **81** (2021) 332 [[arXiv:2009.14791](#)] [[INSPIRE](#)].
- [69] ATLAS collaboration, *Combination of searches for heavy resonances decaying into bosonic and leptonic final states using 36 fb^{-1} of proton-proton collision data at $\sqrt{s} = 13\text{ TeV}$ with the ATLAS detector*, *Phys. Rev. D* **98** (2018) 052008 [[arXiv:1808.02380](#)] [[INSPIRE](#)].
- [70] CMS collaboration, *Search for heavy resonances decaying to WW, WZ, or WH boson pairs in the lepton plus merged jet final state in proton-proton collisions at $\sqrt{s} = 13\text{ TeV}$* , *Phys. Rev. D* **105** (2022) 032008 [[arXiv:2109.06055](#)] [[INSPIRE](#)].
- [71] ATLAS collaboration, *Search for heavy diboson resonances in semileptonic final states in pp collisions at $\sqrt{s} = 13\text{ TeV}$ with the ATLAS detector*, *Eur. Phys. J. C* **80** (2020) 1165 [[arXiv:2004.14636](#)] [[INSPIRE](#)].
- [72] CMS collaboration, *Search for a new scalar resonance decaying to a pair of Z bosons in proton-proton collisions at $\sqrt{s} = 13\text{ TeV}$* , *JHEP* **06** (2018) 127 [Erratum *ibid.* **03** (2019) 128] [[arXiv:1804.01939](#)] [[INSPIRE](#)].
- [73] CMS collaboration, *A portrait of the Higgs boson by the CMS experiment ten years after the discovery*, *Nature* **607** (2022) 60 [[arXiv:2207.00043](#)] [[INSPIRE](#)].
- [74] ATLAS collaboration, *A detailed map of Higgs boson interactions by the ATLAS experiment ten years after the discovery*, *Nature* **607** (2022) 52 [Erratum *ibid.* **612** (2022) E24] [[arXiv:2207.00092](#)] [[INSPIRE](#)].
- [75] I. Baldes and G. Servant, *High scale electroweak phase transition: baryogenesis & symmetry non-restoration*, *JHEP* **10** (2018) 053 [[arXiv:1807.08770](#)] [[INSPIRE](#)].
- [76] O. Matsedonskyi and G. Servant, *High-Temperature Electroweak Symmetry Non-Restoration from New Fermions and Implications for Baryogenesis*, *JHEP* **09** (2020) 012 [[arXiv:2002.05174](#)] [[INSPIRE](#)].
- [77] O. Matsedonskyi, *High-Temperature Electroweak Symmetry Breaking by SM Twins*, *JHEP* **04** (2021) 036 [[arXiv:2008.13725](#)] [[INSPIRE](#)].
- [78] O. Matsedonskyi, J. Unwin and Q. Wang, *Electroweak symmetry non-restoration from dark matter*, *JHEP* **12** (2021) 167 [[arXiv:2107.07560](#)] [[INSPIRE](#)].
- [79] S. Bruggisser, B. Von Harling, O. Matsedonskyi and G. Servant, work in progress.
- [80] G. Durieux and O. Matsedonskyi, *The top-quark window on compositeness at future lepton colliders*, *JHEP* **01** (2019) 072 [[arXiv:1807.10273](#)] [[INSPIRE](#)].
- [81] M. Cepeda et al., *Report from Working Group 2: Higgs Physics at the HL-LHC and HE-LHC*, *CERN Yellow Rep. Monogr.* **7** (2019) 221 [[arXiv:1902.00134](#)] [[INSPIRE](#)].
- [82] R. Contino and G. Servant, *Discovering the top partners at the LHC using same-sign dilepton final states*, *JHEP* **06** (2008) 026 [[arXiv:0801.1679](#)] [[INSPIRE](#)].
- [83] O. Matsedonskyi, F. Riva and T. Vantalón, *Composite Charge 8/3 Resonances at the LHC*, *JHEP* **04** (2014) 059 [[arXiv:1401.3740](#)] [[INSPIRE](#)].

- [84] O. Matsedonskyi, G. Panico and A. Wulzer, *Top Partners Searches and Composite Higgs Models*, *JHEP* **04** (2016) 003 [[arXiv:1512.04356](#)] [[INSPIRE](#)].
- [85] O. Matsedonskyi, *On Flavour and Naturalness of Composite Higgs Models*, *JHEP* **02** (2015) 154 [[arXiv:1411.4638](#)] [[INSPIRE](#)].
- [86] G. Cacciapaglia, A. Deandrea, A.M. Iyer and A. Pinto, *Sifting composite from elementary models at FCCee and CePC*, [arXiv:2211.00961](#) [[INSPIRE](#)].
- [87] R. Franceschini et al., *What is the $\gamma\gamma$ resonance at 750 GeV?*, *JHEP* **03** (2016) 144 [[arXiv:1512.04933](#)] [[INSPIRE](#)].
- [88] M. Chala et al., *Minimally extended SILH*, *JHEP* **06** (2017) 088 [[arXiv:1703.10624](#)] [[INSPIRE](#)].
- [89] G. Cacciapaglia, G. Ferretti, T. Flacke and H. Serôdio, *Light scalars in composite Higgs models*, *Front. in Phys.* **7** (2019) 22 [[arXiv:1902.06890](#)] [[INSPIRE](#)].
- [90] A.S. Cornell, A. Deandrea, B. Fuks and L. Mason, *Future lepton collider prospects for a ubiquitous composite pseudoscalar*, *Phys. Rev. D* **102** (2020) 035030 [[arXiv:2004.09825](#)] [[INSPIRE](#)].