

Multiwavelength observations of a VHE gamma-ray flare from PKS 1510–089 in 2015

M. L. Ahnen¹, S. Ansoldi^{2,25}, L. A. Antonelli³, C. Arcaro⁴, A. Babić⁵, B. Banerjee⁶, P. Bangale⁷, U. Barres de Almeida^{7,26}, J. A. Barrio⁸, W. Bednarek¹¹, E. Bernardini^{12,28}, A. Berti^{2,29}, B. Biasuzzi², A. Biland¹, O. Blanch¹³, S. Bonnefoy⁸, G. Bonnoli¹⁴, F. Borraici⁷, T. Bretz^{15,30}, R. Carosi¹⁴, A. Carosi³, A. Chatterjee⁶, P. Colin⁷, E. Colombo^{9,10}, J. L. Contreras⁸, J. Cortina¹³, S. Covino³, P. Cumani¹³, P. Da Vela¹⁴, F. Dazzi⁷, A. De Angelis⁴, B. De Lotto², E. de Oña Wilhelmi¹⁶, F. Di Pierro³, M. Doert¹⁷, A. Domínguez⁸, D. Dominis Prester⁵, D. Dorner¹⁵, M. Doro⁴, S. Einecke¹⁷, D. Eisenacher Glawion¹⁵, D. Elsaesser¹⁷, M. Engelkemeier¹⁷, V. Fallah Ramazani¹⁸, A. Fernández-Barral¹³, D. Fidalgo⁸, M. V. Fonseca⁸, L. Font¹⁹, C. Fruck⁷, D. Galindo²⁰, R. J. García López^{9,10}, M. Garzarczyk¹², M. Gaug¹⁹, P. Giammaria³, N. Godinović⁵, D. Gora¹², D. Guberman¹³, D. Hadasch²¹, A. Hahn⁷, T. Hassan¹³, M. Hayashida²¹, J. Herrera^{9,10}, J. Hose⁷, D. Hrupec⁵, G. Hughes¹, K. Ishio⁷, Y. Konno²¹, H. Kubo²¹, J. Kushida²¹, D. Kuveždić⁵, D. Lelas⁵, E. Lindfors¹⁸, S. Lombardi³, F. Longo^{2,29}, M. López⁸, P. Majumdar⁶, M. Makariev²², G. Maneva²², M. Manganaro^{9,10}, K. Mannheim¹⁵, L. Maraschi³, M. Mariotti⁴, M. Martínez¹³, D. Mazin^{7,31}, U. Menzel⁷, R. Mirzoyan⁷, A. Moralejo¹³, E. Moretti⁷, D. Nakajima²¹, V. Neustroev¹⁸, A. Niedzwiecki¹¹, M. Nievas Rosillo⁸, K. Nilsson^{18,32}, K. Nishijima²¹, K. Noda⁷, L. Nogués¹³, S. Paiano⁴, J. Palacio¹³, M. Palatiello², D. Paneque⁷, R. Paoletti¹⁴, J. M. Paredes²⁰, X. Paredes-Fortuny²⁰, G. Pedalletti¹², M. Peresano², L. Perri³, M. Persic^{2,33}, J. Poutanen¹⁸, P. G. Prada Moroni²³, E. Prandini⁴, I. Puljak⁵, J. R. Garcia⁷, I. Reichardt⁴, W. Rhode¹⁷, M. Ribó²⁰, J. Rico¹³, T. Saito²¹, K. Satalecka¹², S. Schroeder¹⁷, T. Schweizer⁷, S. N. Shore²³, A. Sillanpää¹⁸, J. Sitarek¹¹*, I. Šnidarić⁵, D. Sobczynska¹¹, A. Stamerra³, M. Strzys⁷, T. Surić⁵, L. Takalo¹⁸, F. Tavecchio³, P. Temnikov²², T. Terzić⁵, D. Tescaro⁴, M. Teshima^{7,31}, D. F. Torres²⁴, N. Torres-Albà²⁰, T. Toyama⁷, A. Treves², G. Vanzo^{9,10}, M. Vazquez Acosta^{9,10}, I. Vovk⁷, J. E. Ward¹³, M. Will^{9,10}, M. H. Wu¹⁶, D. Zarić⁵, R. Desiante² (MAGIC Collaboration), J. Becerra González^{9,10,27}, F. D’Ammando^{34,35}, S. Larsson^{36,37} (Fermi-LAT Collaboration), C. M. Raiteri³⁸, R. Reinthal³⁹, A. Lähteenmäki^{40,41}, E. Järvelä^{40,41}, M. Tornikoski⁴⁰, V. Ramakrishnan⁴⁰, S. G. Jorstad^{42,43}, A. P. Marscher⁴², V. Bala⁴², N. R. MacDonald⁴², N. Kaur^{44,45}, Sameer^{44,46}, K. Baliyan⁴⁴, J. A. Acosta-Pulido^{9,10}, C. Lazaro^{9,10}, C. Martínez-Lombilla^{9,10}, A. B. Grinon-Marin^{9,10}, A. Pastor Yabar^{9,10}, C. Protasio^{9,10}, M. I. Carnerero^{9,10,38}, H. Jermak^{47,48}, I. A. Steele⁴⁸, V. M. Larionov^{43,49}, G. A. Borman⁵⁰, and T. S. Grishina⁴³

(Affiliations can be found after the references)

Received ; accepted

ABSTRACT

Context. PKS 1510–089 is one of only a few flat spectrum radio quasars detected in the VHE (very-high-energy, > 100 GeV) gamma-ray band.
Aims. We study the broadband spectral and temporal properties of the PKS 1510–089 emission during a high gamma-ray state.
Methods. We performed VHE gamma-ray observations of PKS 1510–089 with the MAGIC telescopes during a high gamma-ray state in May 2015. In order to perform broad-band modelling of the source, we have also gathered contemporaneous multiwavelength data in radio, IR, optical photometry and polarization, UV, X-ray and GeV gamma-ray ranges. We construct a broadband spectral energy distribution (SED) in two periods, selected according to VHE gamma-ray state.
Results. PKS 1510–089 has been detected in a high optical and gamma-ray state, showing for the first time a significant VHE gamma-ray variability. Similarly to the optical and gamma-ray high state of the source detected in 2012, it was accompanied by a rotation of the optical polarization angle and the emission of a new jet component observed in radio. The spectral shape in the VHE band during the flare is similar to the ones obtained during previous measurements of the source. The observed flux variability sets for the first time constraints on the size of the region from which VHE gamma rays are emitted. The broadband SED can be explained in the External Compton scenario.

Key words. galaxies: active – galaxies: jets – gamma rays: galaxies – quasars: individual: PKS 1510-089

1. Introduction

PKS 1510–089 is a bright flat spectrum radio quasar (FSRQ) located at the redshift of $z = 0.36$ (Tanner et al. 1996). The source is one of only six objects firmly classified as an FSRQ from

* Corresponding authors: J. Sitarek (jsitarek@uni.lodz.pl), J. Becerra González, E. Lindfors, F. Tavecchio, M. Vazquez Acosta

which gamma-ray emission has been detected in the very-high-energy (VHE, > 100 GeV) range (Abramowski et al. 2013). Moreover, one of the highest recorded apparent speeds of superluminal motion, up to $\sim 46c$, has been seen in the ultra-relativistic jet of PKS 1510–089 (Jorstad et al. 2005). Like in many other FSRQs, the GeV gamma-ray emission of PKS 1510–089 is strongly variable (Abdo et al. 2010; Saito et al. 2013; Aleksić et al. 2014). The doubling-time scales of the PKS 1510–089 flares observed in the GeV range go down to 1 h (Saito et al. 2013).

Most of the FSRQs have been detected in the VHE gamma-ray range during (usually short) flares (see, e.g., Albert et al. 2008; Aleksić et al. 2011; Ahnen et al. 2015). Since 2013 MAGIC performs regular monitoring of PKS 1510–089. Interestingly, until 2015, no variability was seen in PKS 1510–089 in VHE gamma rays; neither in H.E.S.S. (Abramowski et al. 2013) nor in MAGIC (Aleksić et al. 2014) observations. One should note, however, that both VHE gamma-ray detections happened during long periods of enhanced optical and GeV gamma-ray activity. Hence no baseline VHE gamma-ray emission has been established so far from PKS 1510–089.

In May 2015, a strong flare of PKS 1510–089 was observed in GeV gamma-rays by the Large Area Telescope (LAT) on board the *Fermi* satellite. The source showed also at this time high activity in optical (Jankowsky et al. 2015; Mirzoyan 2015) and IR bands (Sameer et al. 2015; Carrasco et al. 2015). The high state triggered further MAGIC observations, which led to the detection of an enhanced VHE gamma-ray activity from the source (Mirzoyan 2015). In May 2016 another flare happened (de Naurois 2016; Mirzoyan 2016), with an even stronger VHE gamma-ray flux than in May 2015. The May 2016 flare will be discussed in a separate paper.

In this paper we report on the observations of PKS 1510–089 during the May 2015 flare. In Section 2 we shortly introduce the instruments which provided multiwavelength data and describe the data reduction procedures. In Section 3 we present the multiwavelength behaviour of the source. Section 4 is devoted to the interpretation of the data in the framework of an External Compton model. The most important results are summarized in Section 5.

2. Instruments, observations and data analysis

During the May 2015 outburst PKS 1510–089 was observed by various instruments in a broad range of frequencies (from radio up to VHE gamma rays). In this section we introduce the different instruments and data sets and explain the data analysis procedure.

2.1. MAGIC

MAGIC is a system of two Imaging Atmospheric Cherenkov Telescopes with a mirror dish diameter of 17 m each. They are located in Canary Island of La Palma (28.7° N, 17.9° W), at the height of 2200 m a.s.l. (Aleksić et al. 2016a). As PKS 1510–089 is a southern source, only observable at zenith angle $> 38^\circ$, the corresponding trigger threshold is $\gtrsim 90$ GeV (Aleksić et al. 2016b), about 1.7 times larger than for the low zenith observations.

The MAGIC telescopes observed PKS 1510–089 for 5.4 hours between 18 and 24 of May, 2015 (MJD 57160–57166). The data have been analyzed using MARS, the standard analysis package of MAGIC (Zanin et al. 2013; Aleksić et al. 2016b).

As part of the data set was affected by Calima¹ we have applied a correction for the atmosphere transmission based on LIDAR information (Fruck & Gaug 2015).

2.2. Fermi-LAT

Fermi-LAT monitors the gamma-ray sky every 3 h in the energy range from 20 MeV to beyond 300 GeV (Atwood et al. 2009). An analysis of the (publicly available) Pass 8 SOURCE class events was performed for a Region of Interest (ROI) of 10° radius centered at the position of PKS 1510–089. In order to reduce contamination from the Earth Limb, a zenith angle cut of $< 90^\circ$ was applied. The analysis was performed with the ScienceTools software package version v10r0p5 using the P8R2_SOURCE_V6² instrument response function and the gl1_iem_v06 and iso_P8R2_SOURCE_V6_v06 models³ for the Galactic and isotropic diffuse emission (Acero et al. 2016), respectively.

An unbinned likelihood analysis was applied using *gtlike*, including in the model all 3FGL sources (Acero et al. 2015) within 20° from PKS 1510–089. The spectral indices and fluxes were left free for sources within 10° , while sources from 10° to 20° have their parameters fixed to their catalog value. A first unbinned likelihood fit was performed for the events collected within almost 4 months of data from March 22, 2015 to July 19, 2015 (MJD 57103–57223) in the energy range between 100 MeV and 800 GeV. The sources with test statistic (TS; Mattox et al. 1996) below 5 were removed from the model. Next, the optimized output model was used to produce the light curves and spectra of PKS 1510–089 in different time bins (from 1 day to 3 hours) and energy ranges ($E > 100$ MeV, $E > 1$ GeV). For the calculation of the light curves, all sources were fixed in the model except PKS 1510–089 for which both the flux normalization and the spectral index were left free and modeled as a power-law. For the calculation of the spectral points, in addition also the spectral index of PKS 1510–089 was fixed to its best fit value during the considered time period for which the spectral points are estimated. The normalization of the Galactic and isotropic diffuse emission models was left to vary freely during the calculation of both the light curves and the spectra.

2.3. Swift-XRT and UVOT

The multi epochs (16 individual pointings) event-list obtained by the X-ray Telescope (XRT) (Burrows et al. 2004) on-board of *Swift* satellite during the period of May 11 to May 25, 2015 (MJD 57153–57167) with the total exposure time of 26.6 ks were downloaded from the publicly available database table SWIFTXRLOG (*Swift*-XRT Instrument Log). The individual exposures ranged from 0.6 to 4 ks. They were processed using the HEASOFT package version 6.18. All the observations from this period had been performed in photon counting (PC) mode. The source region was defined as a circle of 20 pixel ($\sim 47''$) radius at the centre of the source, while the background region was defined by an annulus centered at the source with inner and outer radii of 40 ($\sim 94''$) and 80 pixels ($\sim 188''$), respectively. The source and background spectra were extracted using XSELECT

¹ Calima is a dust wind originating in Saharian Air Layer.

² http://fermi.gsfc.nasa.gov/ssc/data/analysis/documentation/Cicerone/Cicerone_LAT_IRFs/IRF_overview.html

³ <http://fermi.gsfc.nasa.gov/ssc/data/access/lat/BackgroundModels.html>

task (v2.4c). The source spectrum count rate does not exceed 0.5 counts/s in any of the observation epochs. Therefore, no pile-up correction was needed. For the light curve analysis we have combined 3 pairs of epochs (MJD 57157, 57161, 57163) separated by ~ 2 hr.

The `xrtexpomap` task (v0.2.7) was used to correct the flux loss due to the fact that some of the CCD pixels were not used during the data collection. The `xrtmkarf` task (v0.6.3) took into account vignetting and bad pixels. The `grppha` task was used to group source spectra in a way that each bin contains 20 counts. `XSPEC` task (v12.9.0i) was used to calculate the flux and power law model spectral parameters using fixed equivalent Galactic hydrogen column density of $n_H = 6.89 \times 10^{20} \text{ [cm}^{-2}\text{]}$ (Kalberla et al. 2005).

The second instrument on board the *Swift* satellite, the Ultraviolet/Optical Telescope (UVOT, Poole et al. 2008) was used to monitor the flux of the source in the 180–600 nm wavelength range. Following Raiteri et al. (2010) we used an iterative procedure for the data calibration, where the effective wavelength, counts-to-flux conversion factor and Galactic extinction for each filter were calculated by taking into account the filter effective area and source spectral shape. Out of the 16 pointings in the investigated time period, 8 were taken with a full set of filters (v, b, u, w1, m2, w2). For the SED modelling we used pointings on MJD 57160 (with u and w2 filters) contemporaneous with the MAGIC flaring state, and on MJD 57165 (all filters available) during the post-flare MAGIC observations.

2.4. Optical photometry and polarization

PKS 1510–089 is regularly monitored as part of the Tuorla blazar monitoring program⁴ in R-band using a 35 cm Celestron telescope attached to the KVA (Kunglinga Vetenskapssakademi) telescope located at La Palma. The data analysis was performed with the semi-automatic pipeline using the standard analysis procedures (Nilsson et al. in prep). The differential photometry was performed using the comparison star magnitudes from Villata et al. (1997). The magnitudes were corrected for the Galactic extinction using values from Schlafy & Finkbeiner (2011).

The optical polarization observations were performed with a number of instruments: Nordic Optical Telescope (NOT), Steward Observatory, Perkins Telescopes, RINGO3, AZT-8 and LX-200. The NOT polarimetric observations were done with ALFOSC in the R-band using the standard setup for linear polarization observations ($\lambda/2$ retarder followed by a calcite). The data were analyzed using the standard procedures with semi-automatic software as in Hovatta et al. (2016). The Steward polarimetric observations were obtained as part of an ongoing monitoring program of gamma-ray-bright blazars in support of the *Fermi* mission⁵. The observations were performed in the 5000–7000 Å band. The data analysis pipeline is described in Smith et al. (2009). Polarimetric R-band observations were also provided by the 1.8 m Perkins telescope at Lowell Observatory equipped with PRISM (Perkins Reimaging System). The data analysis was done following the standard procedures as in Chatterjee et al. (2008). Polarization observations were also taken with the RINGO3 polarimeter (Arnold et al. 2012) on the fully robotic and autonomous Liverpool Telescope on La Palma, Canary Islands (Steele et al. 2004) as part of the Liverpool blazar monitoring campaign (see Jermak et al. 2016), in collaboration

with the Monitoring AGN Polarimetry at the Liverpool Telescope (MAPLIT) program. Simultaneous observations in the ‘blue’, 350–640 nm; ‘green’, 650–760 nm; and ‘red’, 770–1000 nm passbands were taken using a rapidly rotating (once per 4 seconds) polaroid which modulates the incoming beam of light in 8 rotor positions. For this work we use only the 650–760 nm measurements, which are the closest to the R-band used in the mentioned above polarization instruments. The beam is simultaneously split by 2 dichroic mirrors into three electron multiplying CCD cameras (EMCCDs). The combination of the flux from the 8 rotor positions using equations from Clarke & Neumayer (2002) can be used to find the linear Stokes parameters, which were used to calculate the degree and angle of polarization. Finally, additional optical polarimetric data are reported here from the 70cm AZT-8 telescope (Crimea) and the 40cm LX-200 telescope (St. Petersburg), both equipped with nearly identical imaging photometers-polarimeters (Larionov et al. 2008). Polarimetric observations were performed using two Savart plates rotated by 45° relative to each another. By swapping the plates, the observer can obtain the relative Stokes q and u parameters from the two split images of each source in the field. Instrumental polarization was found via stars located near the object under the assumption that their radiation is unpolarized. The electric vector position angle (EVPA) was corrected for the $n \times 180^\circ$ ambiguity by minimizing the difference to the closest data point unless there is a gap of over 14 days.

2.5. Infrared

PKS 1510–089 is monitored by a number of IR instruments. We have used the publicly available data in B, V, R, J and K bands from the Small and Moderate Aperture Research Telescope System (SMARTS) instrument located at Cerro Tololo Interamerican Observatory (CTIO) in Chile. The data reduction and calibration is described in Bonning et al. (2012). We converted the magnitudes into flux units using Bessell et al. (1998) and corrected for the interstellar dust absorption following Schlafy & Finkbeiner (2011).

The observations at Teide Observatory (Canary Islands) were obtained with the 1.52 m Carlos Sanchez Telescope (TCS), using the near-infrared camera CAIN during the nights of MJD 57162–57174. This camera is equipped with a 256×256 pixels NICMOS-3 detector providing a scale of $1''/\text{pixel}$. Data were acquired in the three filters J, H and Ks. Observations were performed using a 5-point dither pattern (repeated twice) in order to facilitate a proper sky background subtraction. At each point, the exposure time was about 1 min, split in individual exposures of 10 s in the J filter and 6 s in the H and Ks filters to avoid saturation by sky brightness. Image reduction was performed with the *caindr* package under the IRAF environment⁶. Data reduction includes flat-fielding, sky subtraction, and the shift and combination of all frames taken in the same dither cycle. Photometric calibration was made based on field stars from the 2MASS catalogue (Cutri et al. 2003). The photometric zero point was determined for each frame by averaging the offset between the instrumental and the 2MASS magnitudes of the catalogue. Deviant stars were excluded and typical errors remained below 5%.

We have also used IR photometry data obtained with a 1.2m telescope of Mt Abu InfraRed Observatory (MIRO), India, mounted with the Near Infrared Camera and Spectrograph (NICS) equipped with 1024×1024 HgCdTe Hawaii array detector. The field of view is $8' \times 8'$ with a pixel scale of $0.5''/\text{pixel}$.

⁴ <http://users.utu.fi/kani/1m>

⁵ <http://james.as.arizona.edu/~psmith/Fermi>

⁶ Image Reduction and Analysis Facility, <http://iraf.noao.edu/>

The observations on PKS 1510–089 were performed with a 4-position dither with offsets of 30 arcsec, keeping the comparison stars⁷ 1, 2, 3, 4 and 6 in the field of the source. The sky and dark contributions were removed using these dithered images and aperture photometry was performed using standard procedures under IRAF (see Banerjee & Ashok (2012) for details of data reduction and analysis). The source magnitudes in J, H and Ks bands were calibrated using correction factors obtained using weighted average of the standard values of comparison stars mentioned above.

2.6. Radio

Radio monitoring observations were performed with Metsähovi Radio Telescope operating at 43 GHz frequency. The instrument and data reduction procedures are described in Teräsranta et al. (1998) and Aleksić et al. (2014).

The quasar PKS 1510–089 has been observed within a sample of gamma-ray blazars that the Boston University (BU) blazar group monitors with the Very Long Baseline Array (VLBA) approximately monthly at 43 GHz (the VLBA-BU-BLAZAR project). The observations of PKS 1510–089 are usually performed during 9 short (~ 5 min) scans within a span of 7–8 hours. The data were calibrated at the VLBA DiFX correlator and reduced using the Astronomical Image Process System (AIPS) and *Difmap* software packages, as described in Jorstad et al. (2005). The calibrated data are available online (www.bu.edu/blazars/VLBAproject.htm). We analyzed the data obtained from February 2015 to April 2016 (12 epochs). We modeled the total intensity images by components with circular gaussian brightness distributions. For each component we determined: flux density, distance and position angle (PA) with respect to the VLBI core⁸, and size. 43 GHz core is expected to be located at the distance of ~6.5 pc from the central engine of PKS 1510–089 (see Pushkarev et al. 2012; Aleksić et al. 2014). A map of the parsec scale jet of the quasar with 20 stacked images over 6 years of VLBA observations at 43 GHz is shown in Fig. 1 to reveal the structure of a quiescent radio state. The image shows the VLBI core, which is the brightest compact feature located at the southeast end of the jet, and the extended jet at PA ~ –30°.

3. Results

In Fig. 2 we show the multiwavelength light curve of PKS 1510–089 during the May 2015 outburst in the investigated period of MJD 57151–57174. Following the observations of MAGIC, we define two observation periods: Period A (MJD~ 57160–57161) and Period B (MJD~57164–57166). The multiwavelength SED of both periods is investigated.

3.1. MAGIC

The MAGIC light curve (see top panel of Fig. 2) shows clear variability, with the highest flux observed during the two nights of Period A. The hypothesis of constant flux during all 5 observation nights of MAGIC can be clearly rejected, with a chance probability of 7.7×10^{-8} . Even allowing for a 20% variable systematic uncertainty on individual night fluxes (motivated by

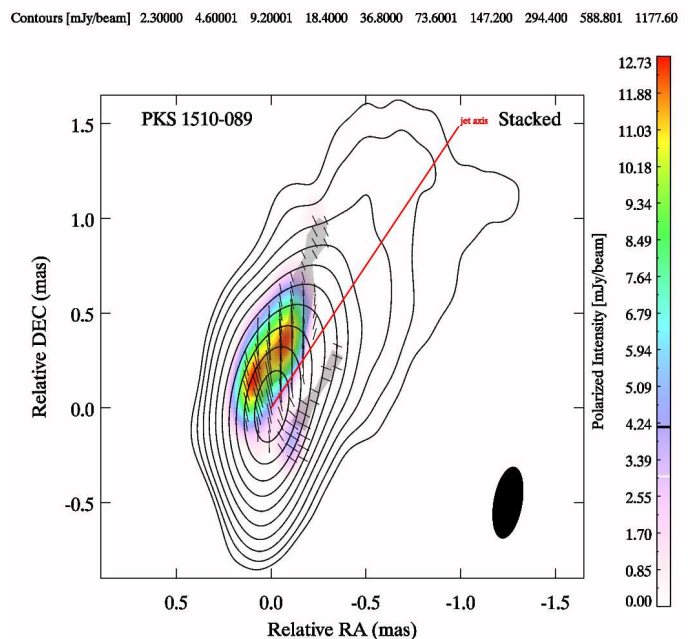


Fig. 1. A stacked map of 43 GHz total (black contours) and polarized (color scale) intensity images of the inner, pc-scale jet of PKS 1510–089 with the direction of polarization denoted by black line segments (contour levels are indicated on the top, polarized flux levels are shown by the color bar to the right). All images have been convolved with the same Gaussian beam, shown in the lower right corner.

variable systematic uncertainty estimate given in Aleksić et al. 2016b, rescaled to a softer source) we still obtain a small value of chance probability of 3.2×10^{-4} for the flux to be constant. The flux during Period A is ~ 5 times larger than the one observed during the previous detection by MAGIC in 2012 (Aleksić et al. 2014). In the following observations during Period B, the VHE gamma-ray flux decreased to a level consistent with the detection in 2012.

In order to search for a possible short time variability we binned the light curve during the Period A into 20 min bins (see Fig. 3). No variability is detected at such a time scale. Fitting the light curve with a constant flux hypothesis we obtain $\chi^2/N_{\text{dof}} = 5.9/7$. We estimate the maximum variability which can be hidden by the uncertainties of the measurement by computing for each 20 min light curve bin a 95% C.L. interval on the flux using Rolke et al. (2005) prescription. We include a 20% variable systematic uncertainty in those calculations. By comparing the least constraining upper edge of the 95% C.L. interval with the average flux from those two nights we obtained that the flux did not increase by more than a factor 3.5 on time scales of 20 min.

For spectral analysis we have combined the two nights of Period A. The obtained VHE gamma-ray spectrum of PKS 1510–089 is shown in Fig. 4. It can be described by a power law, $dN/dE = f \times (E/200 \text{ GeV})^{-\alpha} [\text{cm}^{-2} \text{ s}^{-1} \text{ TeV}^{-1}]$, with $f = (1.96 \pm 0.55_{\text{stat}} \pm 0.36_{\text{syst}}) \times 10^{-10}$ and $\alpha = 4.59 \pm 0.75_{\text{stat}}$. The spectral parameters are obtained using a forward folding method (Albert et al. 2007). The statistical uncertainty on the spectral index is much larger than the typical systematic uncertainty of ± 0.15 of the observations performed with the MAGIC telescopes. The systematic uncertainty on the flux normalization does not include the uncertainty of the energy scale of MAGIC which for this data set we estimate as $\lesssim 19\%$, slightly larger than

⁷ <https://www.lsw.uni-heidelberg.de/projects/extragalactic/charts/1510-089.html>

⁸ PA is measured starting from the positive direction of Declination axis (PA= 0°) increasing in the positive direction of Right Ascension axis (PA= 90°)

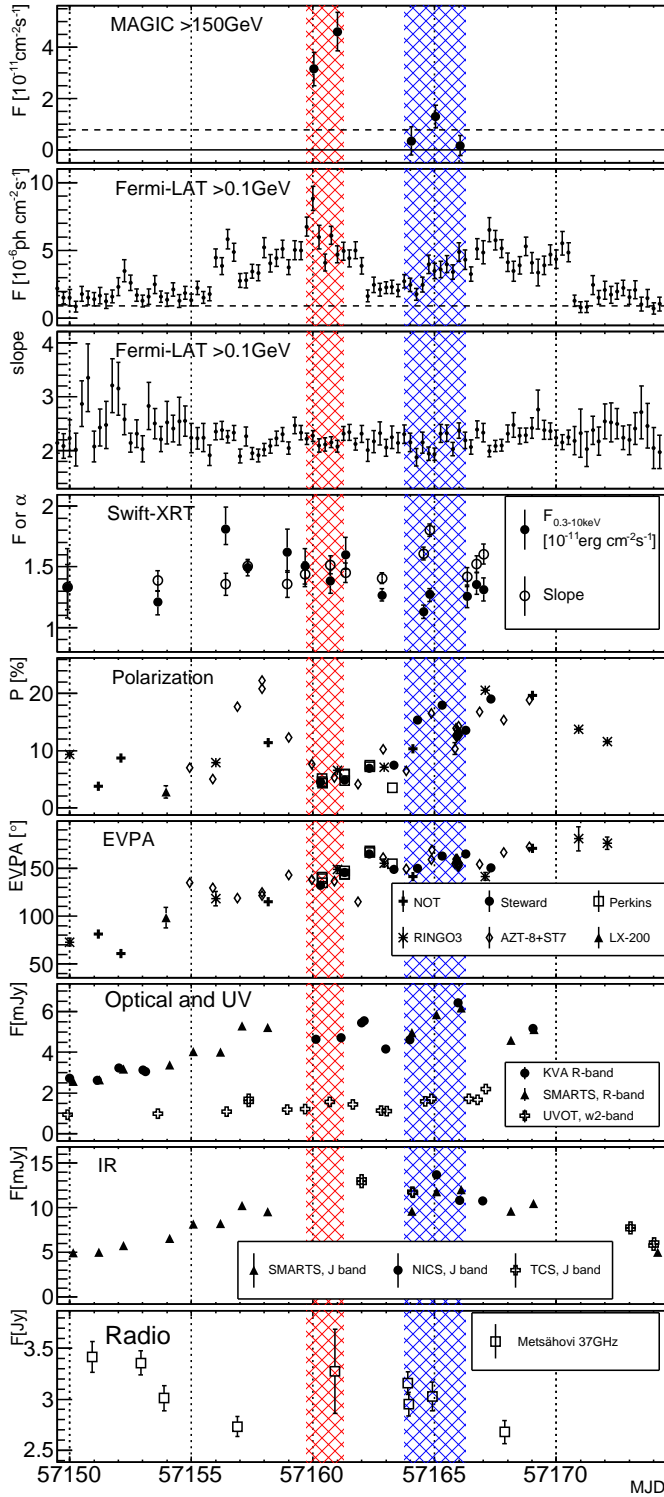


Fig. 2. Multiwavelength light curve of PKS 1510–089 during the May 2015 flare. From top to bottom: Nightly gamma-ray flux above 150 GeV from MAGIC (the dashed line shows the average emission in Feb–Apr 2012, Aleksić et al. 2014); *Fermi*-LAT flux above 0.1 GeV in 6 h binning, and the corresponding spectral index (the dashed line shows the average emission from the 3FGL catalog, Acero et al. 2015); X-ray spectral flux (filled circles) and spectral index (empty circles) measured by *Swift*-XRT; polarization percentage and polarization angle measured by NOT, Steward, Perkins, RINGO3, AZT-8 and LX-200 (see legend); optical emission in R band (KVA, SMARTS) and UV emission in w2-band (*Swift*-UVOT); IR emission in J band (SMARTS, MIRO-NICS, TCS); radio observations by Metsähovi at 37 GHz. Data from IR up to UV are corrected for the Galactic absorption. The red and blue shaded regions show the Period A and Period B, respectively, for which the spectral modelling is performed.

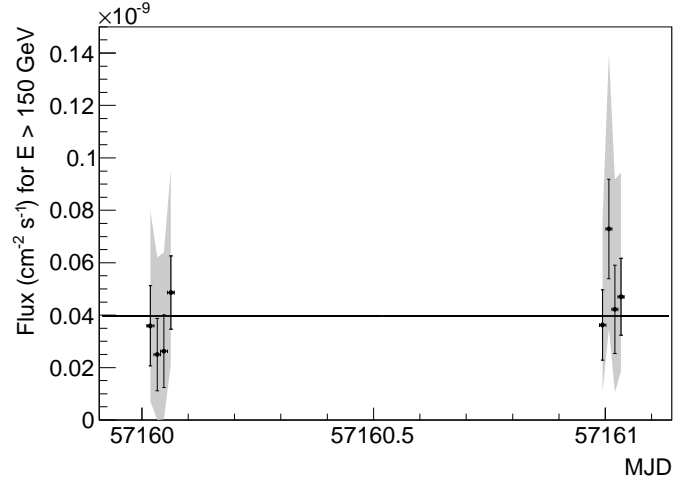


Fig. 3. Light curve above 150 GeV obtained with the MAGIC telescopes during the flare in Period A. The fluxes are computed in 20 min bins. The black line shows the constant flux fit, $(4.0 \pm 0.5) \times 10^{-11} \text{ cm}^{-2} \text{ s}^{-1}$. The gray band shows the 95% C.L. interval allowing for 20% variable systematic uncertainty (see text for details).

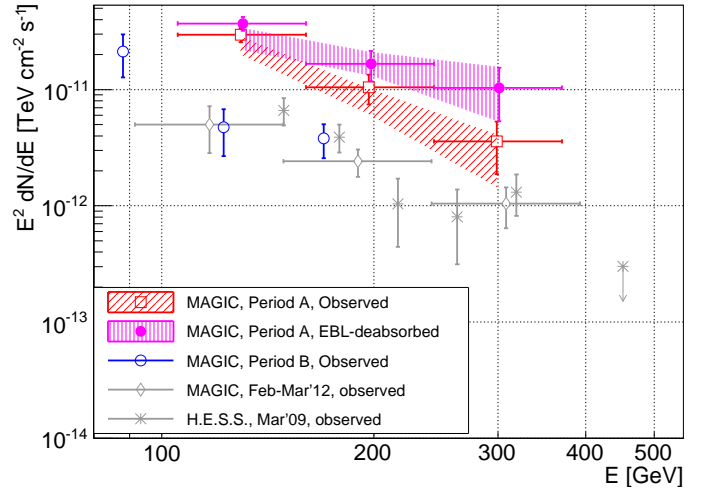


Fig. 4. Spectral energy distribution of PKS 1510–089 constructed from the MAGIC data gathered on MJD 57160 and 57161 (Period A). The observed spectrum is shown in red empty squares with inclined hashing, and the EBL-deabsorbed spectrum according to Domínguez et al. (2011) model with magenta filled circles with vertical hashing. The hashing shows the uncertainty of the forward folding with a power law. The SED constructed from the data taken on MJD between 57164 and 57166 (Period B) is shown as empty blue circles. For comparison, MAGIC measurements performed in Feb–Mar 2012 and H.E.S.S. measurements from Mar 2009 (Abramowski et al. 2013) are shown as gray diamonds and stars respectively.

$\lesssim 15\%$ given in Aleksić et al. (2016b), due to the need of LIDAR correction of Calima-affected data. Correcting for the absorption of TeV gamma-rays due to the interaction with the extragalactic background light according to Domínguez et al. (2011) model, an intrinsic spectrum with normalization of $f_{\text{deabs}} = (4.2 \pm 1.0_{\text{stat}} \pm 0.76_{\text{syst}}) \times 10^{-10}$ and index $\alpha_{\text{deabs}} = 3.17 \pm 0.80_{\text{stat}}$ are obtained. The spectral shape is marginally consistent (but with large uncertainties) with the previous measurements by H.E.S.S. (observed slope $5.4 \pm 0.7_{\text{stat}} \pm 0.3_{\text{syst}}$, Abramowski et al. 2013) and MAGIC (intrinsic slope $2.5 \pm 0.6_{\text{stat}}$, Aleksić et al. 2014).

For comparison, we have also reconstructed the average flux from the MAGIC measurements performed during Period B. The

combination of weaker emission and observations performed during higher atmospheric transmission results in the energy range of the reconstructed spectrum shifted to lower energies. The observed flux in Period B is at a similar level as the one detected by MAGIC in 2012. We obtained the observed and intrinsic VHE spectral slopes of PKS 1510–089 during Period B of $4.75 \pm 0.62_{\text{stat}}$ and $4.33 \pm 0.75_{\text{stat}}$ respectively.

3.2. *Fermi*-LAT

The GeV gamma-ray flux of PKS 1510–089 is highly variable in the investigated period. A few individual flares are visible, with time scales of a few days. Due to the short-term gamma-ray variability, in order to get a spectrum comparable to the MAGIC observations, for SED analysis we selected the events observed by the LAT within 6 h centered in each of the MAGIC observations. We have calculated two GeV spectra, which correspond to the two different states of the source contemporaneously to the MAGIC observations in Period A and Period B, respectively. The best description of the GeV spectrum measured by the LAT in Period A is a power-law with spectral index 2.20 ± 0.07 and a flux above 100 MeV of $(6.8 \pm 0.5) \times 10^{-6} \text{ ph cm}^{-2} \text{ s}^{-1}$ (TS = 842). During Period B, the *Fermi*-LAT measured spectrum is best described by a power-law with a similar spectral index of 2.17 ± 0.08 , but significantly lower flux, $(3.7 \pm 0.3) \times 10^{-6} \text{ ph cm}^{-2} \text{ s}^{-1}$ (TS = 564). For comparison, the 3FGL flux above 100 MeV is $(0.94 \pm 0.01) \times 10^{-6} \text{ ph cm}^{-2} \text{ s}^{-1}$ (Acero et al. 2015). Therefore PKS 1510–089 has reached a factor of ~ 7 to 4 times its average flux over the first 4 years of *Fermi*-LAT observations during the two epochs for which the spectral analyses has been performed. The GeV flux was, however, still a factor of about 2 smaller than the daily peak flux observed in 2011 (Saito et al. 2015). The *Fermi*-LAT spectrum during both Period A and B was slightly harder than in the neighbouring days (see also Section 3.5). In the case of Period B there is a weak hint of a spectral curvature. The likelihood ratio test gives 2.8σ preference ($\Delta\text{TS} = 8.0$ for one additional degree of freedom) of the log-parabola shape over the power-law spectral model. The corresponding photon index can be described as $(2.05 \pm 0.10) + (0.21 \pm 0.09) \times \ln(E/0.45 \text{ GeV})$.

To characterize the variability in the *Fermi*-LAT light curve we calculated the Power Density Spectrum (PDS) both for the 2015 flare epoch (MJD 57143.9375–57182.9375) with a 3 h binning as well as for a mission lifetime at the time of the analysis (MJD 54682.655–57484.655) with 1 day binning. In both cases the flux calculation was performed in the 0.1–800 GeV energy range.

The estimated white noise level, based on the data error values was subtracted from each PDS. The PDS is rebinned in logarithmic frequency intervals, and normalized to variance per frequency unit divided by the square of the mean flux. The PDS level, computed with such normalization, is similar for the 2015 flare and for the mission lifetime light curve (see Fig. 5). This suggests that the fractional variability is the same and presumably driven by the same variability process. The shape of the overall PDS can be described by a power law for frequencies above 0.01 day^{-1} . A power-law fitted to the 0.007 – 0.5 day^{-1} frequency range PDS gives an index of 1.14 ± 0.07 for full data set and 0.97 ± 0.30 for the 2015 flare. The uncertainty value of the fit is based on the scatter of the measurements with respect to the fitted line only and therefore may be underestimated. The power law index is similar to that of other FSRQs (Ackermann et al. 2011). The stochastic nature of the variability together with the

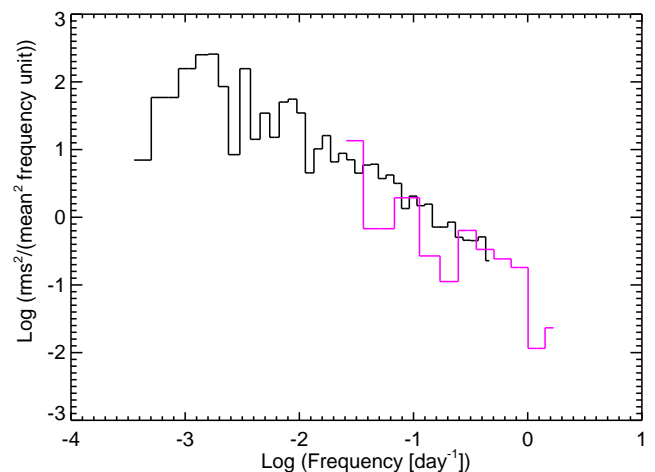


Fig. 5. Power Density Spectrum normalized to variance per frequency unit for the mission long *Fermi*-LAT light curve (black) and for the 2015 flare epoch (magenta).

limited observation length lead to a large uncertainty in the PDS at the lowest frequencies.

3.3. *Swift*-XRT

The X-ray flux, measured by *Swift*-XRT, shows a gradual decrease of the observed flux during the studied period. Except for the first point at MJD 57153.6, which happened before the two large *Fermi*-LAT flares the X-ray flux can be much better described by an exponential decline ($\chi^2/N_{\text{dof}} = 22.6/10$) than a constant value ($\chi^2/N_{\text{dof}} = 47.3/11$). Similarly, the corresponding X-ray spectral indices are better described by a linear softening of the spectrum ($\chi^2/N_{\text{dof}} = 41.0/10$) than a constant ($\chi^2/N_{\text{dof}} = 49.9/11$).

The flux is marginally higher during MJD 57156–57162, when a broad *Fermi*-LAT flare happened. XRT observations on MJD 57166–57168, during the next broad *Fermi* flare did not show a clear increase of the X-ray flux. For spectral analysis we combined the 4 pointings taken during Period A, each of them being 6–8 hr distant from the MAGIC observations. The X-ray spectrum in Period A can be marginally well described ($\chi^2/N_{\text{dof}} = 71/53$) with a power law with an index of 1.48 ± 0.05 . *Swift*-XRT observations performed during Period B resulted in a spectrum which can be well fitted with a power law with a significantly softer index of 1.70 ± 0.04 with $\chi^2/N_{\text{dof}} = 110/89$, or by a curved spectrum with an index of $2.23 \pm 0.14 - (0.366 \pm 0.093) \times \log(E/0.3 \text{ keV})$ with $\chi^2/N_{\text{dof}} = 96/88$.

3.4. IR, Optical and UVOT

The optical emission of PKS 1510–089 during the investigated period is clearly variable (with a factor 2 difference between the lowest and highest flux). The optical variability does not strictly follow the gamma-ray one. In the optical R-band, and to a lesser extent also in UV w2-band, the flux was slowly raising throughout May 2015. Similarly as in the optical range, the IR flux doubled in a ~ 8 days time before Period A. At the end of the observation period it returned to the pre-flare state.

Throughout the investigated period, a smooth rotation of optical EVPA by $\sim 100^\circ$ is happening. The rotations of optical polarization angle accompanied also the 2009 and 2012

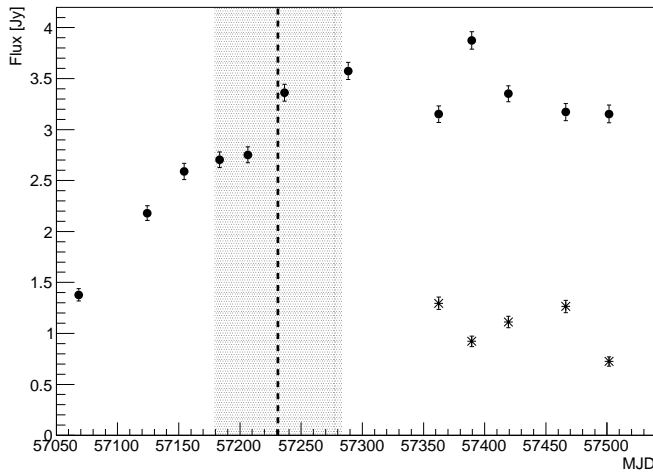


Fig. 6. VLBA light curves of the core (circles) and knot K15 (stars) at 43 GHz. Vertical dashed line and gray shaded region show the zero separation epoch of K15 and its uncertainty.

gamma-ray flaring states (Marscher et al. 2010; Aleksić et al. 2014). However, the rotations of the EVPA seem very common in PKS 1510–089, e.g., recent work by Jermak et al. (2016) identified a rotation also in the 2011 data, therefore further data are needed to firmly associate them with the emission of VHE gamma rays. The low percentage of polarization seems to be typical for this source (Jermak et al. 2016). Indeed, during Period A the polarization percentage is low ($\sim 5\%$). It triples between the period A and B. Also in the few days before the Period A (i.e. during the raising part of the *Fermi*-LAT flare that culminated with detection of VHE gamma-ray emission by MAGIC) a higher polarization was observed. The polarization behaviour during the 2015 flaring period agrees with what one would expect from a knot following a spiral path through a mainly toroidal magnetic field (Marscher et al. 2010). An alternative explanation might be the light travel time effects within an axisymmetric emission region pervaded by predominately helical magnetic field (Zhang et al. 2015). The evolution of the polarization is probably further complicated by superposition of individual flares seen in *Fermi*-LAT.

3.5. Radio

PKS 1510–089 shows moderate variability in Metsähovi observations performed at 37 GHz in May 2015. The sampling is, however, rather sparse, and especially the local peaks of the GeV flux are mostly not covered by the observations. The observations on MJD 57161, during Period A are burdened with a larger uncertainty due to adverse atmospheric conditions.

Fig. 6 shows the light curve of the core from February 2015 to April 2016. The light curve reveals a significant gradual increase of flux in the second half of 2015 that is most likely connected with a disturbance (knot K15) detected in the VLBA images starting in December 2015 (Fig. 7). Knot K15 is bright and relatively slow, with an apparent speed $\beta_{app} = 5.3 \pm 1.4$ c. According to currently available data, the knot was ejected on MJD 57230 ± 52 (see Fig. 8). A similar behavior has also been observed during a high gamma-ray state in Feb–Apr 2012, when the emerging of a new radio knot (K12) from the core was associated with a VHE outburst (Aleksić et al. 2014). The large uncertainty in the ejection time of K15 does not allow us to associate it firmly with a particular GeV flare, as the source showed

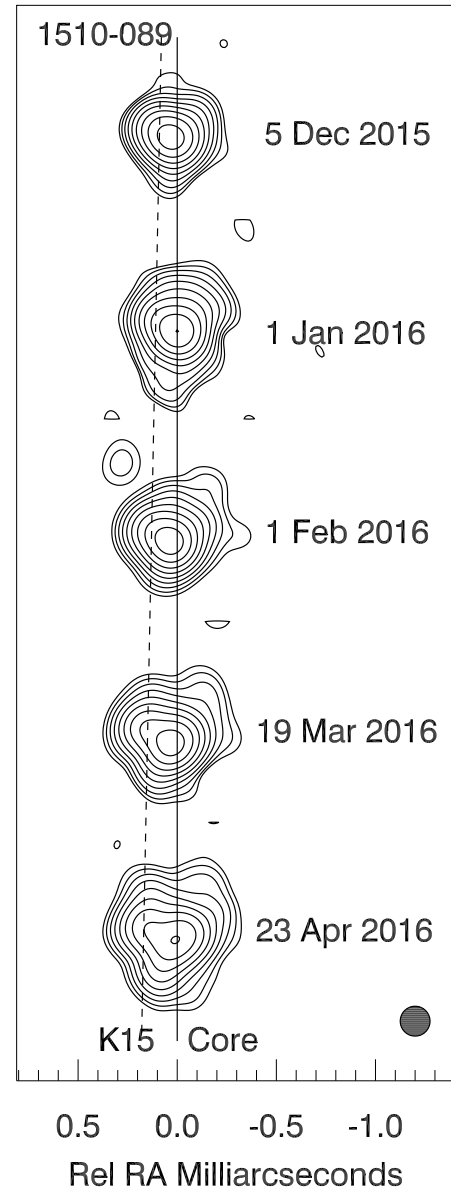


Fig. 7. Total intensity images of PKS 1510–089 core region at 43 GHz, with a global peak intensity of $I_{peak} = 3.566$ Jy/beam and 0.15 mas FWHM circular Gaussian restoring beam (bottom right circle). The solid and dashed lines designate positions of the VLBI core and K15 respectively across the epochs.

activity in *Fermi*-LAT close to the time of K15 separation (note e.g. the hard flare on MJD 57245 in Fig. 9). Interestingly, the position angle of K15 is $\sim +50^\circ$, while the typical projected direction of the pc-scale jet is $\sim -30^\circ$ (see Fig. 1), along which so far 7 knots have been observed (see e.g. Jorstad et al. 2005; Aleksić et al. 2014). On the other hand, knot K11, ejected in October 2011 (before the 2012 VHE outburst), had a similar PA to the one observed now for K15 close to the core, but turned toward the usual pc-scale jet direction a few months later. We note that K15 is a factor of a few times slower than K11, and so may eventually follow a similar trajectory. The slower apparent speed and brighter flux of K15 suggest that the velocity vector of this disturbance is closer to the line of sight than K11, causing it to have a higher Doppler factor.

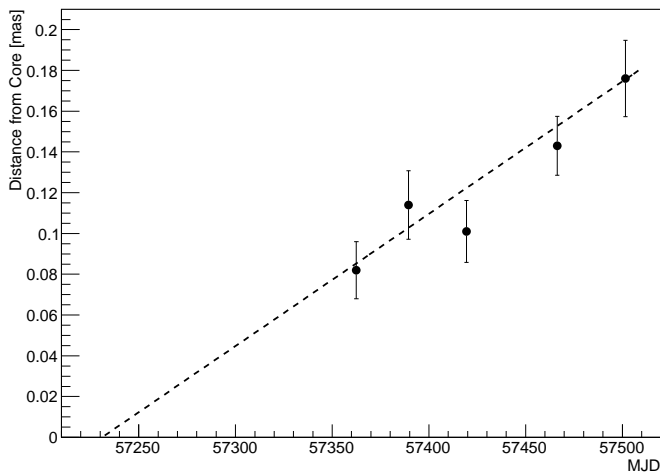


Fig. 8. Separation of knot K15 from the core.

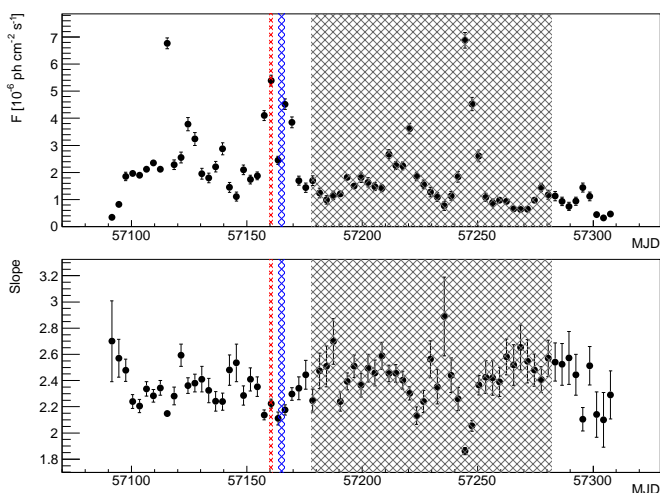


Fig. 9. *Fermi*-LAT light curve above 0.1 GeV (top panel) binned in 3 day intervals and the corresponding evolution of spectral index (bottom panel). Red and blue hashed bands show the Period A and B respectively, while the gray band shows the 1σ uncertainty on the K15 knot separation time.

4. Modelling of the spectral energy distribution

The gamma-ray emission of FSRQs is usually explained as the effect of the inverse Compton scattering of electrons on a radiation field external to the jet (see, e.g., Ghisellini et al. 2010), the so-called external Compton (EC) scenario. The radiation field can originate from the accretion disk, broad line region (BLR) or the dust torus (DT). This scenario has been applied to explain the emission of PKS 1510–089 in its previous flaring episodes (Abdo et al. 2010). The origin of the radiation field is closely connected with the location of the emission region. Moreover, the observed VHE gamma-rays escaping from the emission region suggest that the emission region is located outside the BLR in order to escape the absorption by e^+e^- pair production process on BLR photons (Abramowski et al. 2013; Aleksić et al. 2014). Dotson et al. (2015) investigated the 2009 GeV flares of PKS 1510–089 using the energy dependence of the flare decay time as the diagnostic for the emission zone location. They claimed that two of the flares happened around the distance of the DT, while the other two came from the vicinity of VLBI core. On the other hand, the modelling of GeV flares

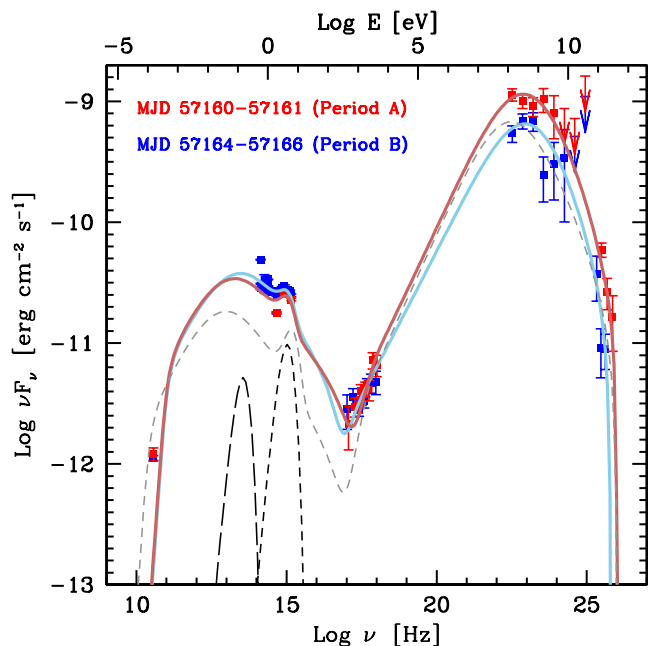


Fig. 10. Multiwavelength spectral energy distribution of PKS 1510–089 in Period A (red symbols) and B (blue symbols). The red and the blue curves report the result of the emission model for the two periods. The black dashed and long-dashed lines show the adopted emission for the accretion disk and the dusty torus, respectively. For comparison, the dashed gray line shows the model derived for the SED in 2012 (from Aleksić et al. 2014).

seen from PKS 1510–089 in 2011 placed the emission region at the distance of 0.3 – 3 pc from the black hole, with the EC process happening on a mixture of BLR and DT radiation fields (Saito et al. 2015). A similar location (~ 1 pc distance from the black hole) with EC mainly on DT was invoked to explain the high optical and gamma-ray state observed in the beginning of 2012 (Aleksić et al. 2014). The broad-band emission could be also explained by a much more distant (~ 20 pc) region for a 2-zone model in which the jet consists of the inner spine and outer sheath layer (Aleksić et al. 2014; MacDonald et al. 2015).

In Fig. 10 we present the two spectral energy distributions of PKS 1510–089 constructed from the data taken in Period A and Period B, corresponding to high and low gamma-ray flux, respectively. As can be seen, most of the flux variation (\approx a factor of 2–3) occurs in the *Fermi*-LAT and MAGIC bands. The low-energy flux (optical, X-rays) is almost constant between the two periods. Remarkably, the high energy peak during the period B has a very similar level to the 2012 high state, in spite of the IR–UV emission being a factor of ~ 3 higher.

We model these SEDs of PKS 1510–089 in the framework of the same one-zone model as discussed in Aleksić et al. (2014). To explain the sub-TeV emission observed by MAGIC we assume that the emission region is located beyond the BLR radius, where the external photon field is dominated by the thermal IR radiation of the DT.

Assuming the same disk luminosity $L_{\text{disk}} = 6.7 \times 10^{45} \text{ erg s}^{-1}$ as in Aleksić et al. (2014) the scaling law of Ghisellini & Tavecchio (2009) allows us to infer a BLR radius of $R_{\text{BLR}} = 2.6 \times 10^{17} \text{ cm}$. We fix the distance of the emission region from the base of the jet to $r = 6 \times 10^{17} \text{ cm}$. The emission region is filling the whole cross section of the jet, which for an assumed jet semi-aperture angle $\theta_j = 0.1 \text{ rad}$ results in the emis-

	γ_{\min} [1]	γ_b [2]	γ_{\max} [3]	n_1 [4]	n_2 [5]	B [6]	K [7]
A	2	800	6×10^4	1.9	3.7	0.23	1.4×10^3
B	1	980	3.5×10^4	2.0	3.8	0.32	1.3×10^3

Table 1. Input model parameters for the models of epochs A (MJD 57160–57161) and B (57164–57166) of PKS 1510–089 in Fig. 10. [1], [2] and [3]: minimum, break and maximum electron Lorentz factor. [4] and [5]: slope of the electron energy distribution below and above γ_b . [6]: magnetic field [G]. [7]: normalization of the electron distribution in units of cm^{-3} .

sion region radius $R = 6 \times 10^{16}$ cm. Such size of the emission region is in line, for moderate values of the Doppler factor, with the constraints set by the few day time scale variability observed by MAGIC.

The apparent superluminal motion of radio component K15 puts limits on $\Gamma \gtrsim 5$. The large uncertainty in the separation time from the radio core does not allow us to firmly associate such limits with the speed of the emission region responsible for the emission in investigated periods A and B. Moreover, the apparent speed is measured over a much longer time scale, during which the emission region might have decelerated. On the other hand the beaming of the emission is constrained by the observed luminosity of the dominating high energy peak. It can be estimated as $L_{EC} = \frac{4}{3}\sigma_{TC}U'_{ext}n_e\langle\gamma^2\rangle V\delta^4$, where U'_{ext} is the energy density of the external radiation field measured in the frame of reference of the blob, n_e is the number density of the electrons, $V = 4/3\pi R^3$ is the volume of the emission region measured in its own frame of reference and δ is the Doppler factor of the blob. The average squared Lorentz factor of the electrons $\langle\gamma^2\rangle$ can be approximated as γ_b if the distribution starts from $\gamma_{\min} \approx 1$ and follows an index of 2 up to the break of γ_b . Assuming $\Gamma \approx \delta$ the total kinetic power of a jet composed of cold protons with number density of n_p is $P_{\text{jet}} = \pi R^2 n_p m_p c^3 \Gamma^2$. Combining the two formulas, for a jet with $n_e \approx n_p$ we obtain $P_{\text{jet}} = 1.3 L_{EC} (U'_{ext}/0.1 \text{ erg cm}^{-3})^{-1} (\gamma_b/10^3)^{-1} (R/10^{17} \text{ cm})^{-1} (\Gamma/10)^{-2}$. The observed luminosity of $\sim 4 \times 10^{47} \text{ erg s}^{-1}$ of the EC peak requires the jet Lorentz factor to be at least 10 even for the case of $P_{\text{jet}} = 10 L_{\text{disk}}$. For the modeling we apply the same values as used in Aleksić et al. (2014) for the jet bulk Lorentz factor $\Gamma = 20$ and $\delta = 25$.

Having fixed these values, the free parameters of the model are only the intensity of the magnetic field B and those describing the electron energy distribution (assumed to follow a smooth broken power law), namely the minimum, break and maximum electron Lorentz factors (γ_{\min} , γ_b and γ_{\max}) and the normalization K . Hence, the observed variability according to this scenario is caused by changes in the conditions of the plasma flowing through the shock region. The values of these parameters required to reproduce the SEDs are reported in Table 1. In fact, the difference in the emission between Period A and B can be explained with a relatively small change in the fit parameters, mainly a slightly stronger magnetic field and lower maximal energies of the electrons.

The model discussed here has some caveats. As typically happens in blazar modelling, the radio points overshoot the model line, which has a strong low energy cutoff due to synchrotron self-absorption. This emission is normally explained to occur from much larger regions farther along the jet. Moreover the variations of the optical emission occur on longer time scales than the flares observed in GeV. Hence, additional optical emis-

sion might be produced by the high energy electrons swept with the flow farther along the jet (up to a few pc from the base of the jet). In those regions the external radiation field density would be too low to efficiently produce high energy photons via inverse Compton process, turning synchrotron emission into the dominant radiation process. In spite of adiabatic energy losses that electrons can suffer, the total observed synchrotron radiation might still slowly increase due to aggregation of electrons from multiple individual flares. In fact, if the electrons reach the radio core (and beyond) located at the distance of d_{core} they could be responsible for the emission of a new radio knot. The separation time of such a knot from the core could be estimated to occur $(1+z)d_{\text{core}}/(c\delta\Gamma) = 21(d_{\text{core}}/6.5 \text{ pc})(\delta/25)^{-1}(\Gamma/20)^{-1}$ days after the gamma-ray flare. We encourage further trials of modelling of the observed high state with scenarios employing emission from larger length of the jet than a single active region.

5. Discussion and Conclusions

Using the MAGIC telescopes data we have detected enhanced VHE gamma-ray emission from the direction of PKS 1510–089 during the high optical and GeV state of the source in May 2015. It is the first time that VHE gamma-ray variability was detected for this source. The spectral shape is, however, consistent within the statistical uncertainties with the previous measurements of the source. During May 2015 the IR through UV data showed a gradual increase of the flux, while the flux in the X-ray range was slowly decreasing.

The May 2015 data revealed, similarly to the 2012 data, that the enhanced VHE gamma-ray emission occurred during the rotation of the optical polarization angle. Also, similarly to other gamma-ray flares, an ejection of a new radio component was observed, however, with an unusual position angle. This suggests that the association of VHE gamma-ray emission with rotation of EVPA and ejection of a new radio component might be a common feature of PKS 1510–089.

The source was modelled with the External Compton scenario. The evolution of the state of the source from the VHE gamma-ray flare to a lower emission (at the level of 2012 high state reported in Aleksić et al. 2014) can be explained by relatively small changes in the conditions of the plasma flowing through the emission region. The presented scenario is, however, only one possible solution. As discussed in Aleksić et al. 2014, if we assume that the VHE flaring is indeed connected to the ejection of the new component (in this case K15) from the VLBA core and the rotation of the optical polarization angle, it would be natural to assume a single emission region located far outside the dusty torus. In this case the seed photons could be provided by the sheath of the jet and this scenario has been shown to provide feasible description of the previous flaring epochs of PKS 1510–089 (Aleksić et al. 2014; MacDonald et al. 2015). The VHE gamma-ray variability with time scale τ seen during the 2015 outburst puts constraints on the size, and therefore also on the location of the emission region. Assuming that the spine of the jet fills a significant fraction of the jet (as in Aleksić et al. 2014), the location of the emission region cannot be farther than $d = \tau\delta c / ((1+z)\theta_j) = 2.7(t/3 \text{ days})(\delta/25)(\theta_j/1^\circ)^{-1} \text{ pc}$. Therefore, for placing the emission region at the radio core a high Doppler factor and a narrow jet are needed. In fact such low values of the jet extension, $(0.2 \pm 0.2)^\circ$ (Jorstad et al. 2005) and 0.9° (Pushkarev et al. 2009) at the radio core are reported by the radio observations. Alternatively, the inner spine can be much

narrower than the whole jet, as suggested by MacDonald et al. (2015).

To further study the connection of VHE emission with events in lower frequencies, long-term monitoring data are needed and this question will be addressed in a future publication. With the detection of this flare from PKS 1510–089, VHE gamma-ray variability (on times scales varying from tens of minutes to days) has been observed in all FSRQs known in VHE gamma rays. Fast-varying VHE gamma-ray emission is common among the brightest gamma-ray FSRQs. As it seems that most of the gamma-ray FSRQs can only be detected during these flares, it is indeed not surprising that only a handful have been detected in VHE gamma-rays.

Acknowledgements. The MAGIC collaboration would like to thank the Instituto de Astrofísica de Canarias for the excellent working conditions at the Observatorio del Roque de los Muchachos in La Palma. The financial support of the German BMBF and MPG, the Italian INFN and INAF, the Swiss National Fund SNF, the ERDF under the Spanish MINECO (FPA2015-69818-P, FPA2012-36668, FPA2015-68278-P, FPA2015-69210-C6-2-R, FPA2015-69210-C6-4-R, FPA2015-69210-C6-6-R, AYA2013-47447-C3-1-P, AYA2015-71042-P, ESP2015-71662-C2-2-P, CSD2009-00064), and the Japanese JSPS and MEXT is gratefully acknowledged. This work was also supported by the Spanish Centro de Excelencia “Severo Ochoa” SEV-2012-0234 and SEV-2015-0548, and Unidad de Excelencia “María de Maeztu” MDM-2014-0369, by grant 268740 of the Academy of Finland, by the Croatian Science Foundation (HrZZ) Project 09/176 and the University of Rijeka Project 13.12.1.3.02, by the DFG Collaborative Research Centers SFB823/C4 and SFB876/C3, and by the Polish MNiSzW grant 745/N-HESS-MAGIC/2010/0. The *Fermi* LAT Collaboration acknowledges generous ongoing support from a number of agencies and institutes that have supported both the development and the operation of the LAT as well as scientific data analysis. These include the National Aeronautics and Space Administration and the Department of Energy in the United States, the Commissariat à l’Energie Atomique and the Centre National de la Recherche Scientifique / Institut National de Physique Nucléaire et de Physique des Particules in France, the Agenzia Spaziale Italiana and the Istituto Nazionale di Fisica Nucleare in Italy, the Ministry of Education, Culture, Sports, Science and Technology (MEXT), High Energy Accelerator Research Organization (KEK) and Japan Aerospace Exploration Agency (JAXA) in Japan, and the K. A. Wallenberg Foundation, the Swedish Research Council and the Swedish National Space Board in Sweden. The Metsähovi team acknowledges the support from the Academy of Finland to our observing projects (numbers 212656, 210338, 121148, and others). This paper has made use of up-to-date SMARTS optical/near-infrared light curves that are available at www.astro.yale.edu/smarts/glast/home.php. MIRO is operated by Physical Research Laboratory, Ahmedabad with support from Dept of Space, government of India. This article is based on observations made with the 1.5 m telescope Carlos Sánchez operated by the Instituto de Astrofísica de Canarias in the Teide Observatory. The data presented here were obtained in part with ALFOSC, which is provided by the Instituto de Astrofísica de Andalucía (IAA) under a joint agreement with the University of Copenhagen and NOTSA. The Liverpool Telescope is operated on the island of La Palma by Liverpool John Moores University in the Spanish Observatorio del Roque de los Muchachos of the Instituto de Astrofísica de Canarias with financial support from the UK Science and Technology Facilities Council. St.Petersburg University team acknowledges support from Russian RFBR grant 15-02-00949 and St.Petersburg University research grant 6.38.335.2015. The BU group acknowledges support by NASA under *Fermi* Guest Investigator grants NNX11AQ03G and NNX14AQ58G. The VLBA is an instrument of the National Radio Astronomy Observatory. The National Radio Astronomy Observatory is a facility of the National Science Foundation operated under cooperative agreement by Associated Universities, Inc.

References

Abdo, A. A., Ackermann, M., Agudo, I., et al. 2010, *ApJ*, 721, 1425
H.E.S.S. Collaboration, Abramowski, A., Acero, F., et al. 2013, *A&A*, 554, A107
Ackermann, M., Ajello, M., Allafort, A., et al. 2011, *ApJ*, 743, 171
Ahnén, M. L., Ansoldi, S., Antonelli, L. A., et al. 2015, *ApJ*, 815, L23
Acero, F., Ackermann, M., Ajello, M. et al. 2015, *ApJS*, 218, 23
Acero, F., Ackermann, M., Ajello, M., et al. 2016, *ApJS*, 223, 26
Albert, J., Aliu, E., Anderhub, H., et al. 2007, *NIM A*, 583, 494
MAGIC Collaboration, Albert, J., Aliu, E., et al. 2008, *Science*, 320, 1752
Aleksić, J., Antonelli, L. A., Antoranz, P., et al. 2011, *ApJ*, 730, L8
Aleksić, J., Ansoldi, S., Antonelli, L. A., et al. 2014, *A&A*, 569, A46

Aleksić, J., Ansoldi, S., Antonelli, L. A., et al. 2016, *Astroparticle Physics*, 72, 61
Aleksić, J., Ansoldi, S., Antonelli, L. A., et al. 2016, *Astroparticle Physics*, 72, 76
Arnold, D. M., Steele, I. A., Bates, S. D., Mottram, C. J., & Smith, R. J. 2012, *Proc. SPIE*, 8446, 84462J
Atwood, W. B., Abdo, A. A., Ackermann, M., et al. 2009, *ApJ*, 697, 1071
Banerjee, D. P. K., & Ashok, N. M. 2012, *Bulletin of the Astronomical Society of India*, 40, 243
Bessell, M. S., Castelli, F., & Plez, B. 1998, *A&A*, 333, 231
Bonning, E., Urry, C. M., Bailyn, C., et al. 2012, *ApJ*, 756, 13
Burrows, D. N., Hill, J. E., Nousek, J. A., et al. 2004, *Proc. SPIE*, 5165, 201
Carrasco, L., Porras, A., Recillas, E., et al. 2015, *The Astronomer’s Telegram*, #7804
Clarke, D., & Neumayer, D. 2002, *A&A*, 383, 360
Cutri, R. M., Skrutskie, M. F., van Dyk, S., et al. 2003, *The IRSA 2MASS All-Sky Point Source Catalog*, NASA/IPAC Infrared Science Archive. <http://irsa.ipac.caltech.edu/applications/Gator/>
Chatterjee, R., Jorstad, S. G., Marscher, A. P. et al. 2008, *ApJ*, 689, 79
Domínguez, A., Primack, J. R., Rosario, D. J., et al. 2011, *MNRAS*, 410, 2556
Dotson, A., Georganopoulos, M., Meyer, E. T., & McCann, K. 2015, *ApJ*, 809, 164
Fruck, C., & Gaug, M. 2015, *European Physical Journal Web of Conferences*, 89, 02003
Ghisellini, G., & Tavecchio, F. 2009, *MNRAS*, 397, 985
Ghisellini, G., Tavecchio, F., Foschini, L., et al. 2010, *MNRAS*, 402, 497
Hovatta, T., Lindfors, E., Pavlidou, V. et al. 2016, *A&A*, submitted
Jankowsky, F., Zacharias, M., Wiercholska, A., et al. 2015, *The Astronomer’s Telegram*, #7799
Jermak, H., Steele, I. A., Lindfors, E., et al. 2016, *MNRAS*, 462, 4267
Jorstad, S. G., Marscher, A. P., Lister, M. L., et al. 2005, *AJ*, 130, 1418
Kalberla, P. M., Burton, W. B., Hartmann, D., et al. 2005, *A&A*, 440, 775
Larionov, V. M., Jorstad, S. G., Marscher, A. P., et al. 2008, *A&A*, 492, 389
MacDonald, N. R., Marscher, A. P., Jorstad, S. G., & Joshi, M. 2015, *ApJ*, 804, 111
Marscher, A. P., Jorstad, S. G., Larionov, V. M., et al. 2010, *ApJ*, 710, L126
Mattox, J. R. et al., 1996, *ApJ*, 461, 396
Mirzoyan, R. for the MAGIC Collaboration 2015, *The Astronomer’s Telegram*, #7542
Mirzoyan, R. 2016, *The Astronomer’s Telegram*, #9105
de Naurois, M. 2016, *The Astronomer’s Telegram*, #9102
Poole, T. S., Breeveld, A. A., Page, M. J., et al. 2008, *MNRAS*, 383, 627
Pushkarev, A. B., Kovalev, Y. Y., Lister, M. L., & Savolainen, T. 2009, *A&A*, 507, L33
Pushkarev, A. B., Hovatta, T., Kovalev, Y. Y., et al. 2012, *A&A*, 545, A113
Raiteri, C. M., Villata, M., Bruschini, L., et al. 2010, *A&A*, 524, A43
Rolke, W. A., López, A. M., & Conrad, J. 2005, *NIM A*, 551, 493
Saito, S., Stawarz, Ł., Tanaka, Y. T., et al. 2013, *ApJ*, 766, L11
Saito, S., Stawarz, Ł., Tanaka, Y. T., et al. 2015, *ApJ*, 809, 171
Sameer, Kaur, N., Ganesh, S., Kumar, V., & Baliyan, K. S. 2015, *The Astronomer’s Telegram*, #7495
Schlafly, E. F. & Finkbeiner, D. P. 2011, *ApJ*, 737, 1038
Smith, P. S., Montiel, E., Rightley, S., Turner, J., Schmidt, G. D., & Jannuzi, B. T. 2009, *arXiv:0912.3621*, 2009 Fermi Symposium, eConf Proceedings C091122
Steele, I. A., Smith, R. J., Rees, P. C., et al. 2004, *Proc. SPIE*, 5489, 679
Tanner, A. M., Bechtold, J., Walker, C. E., Black, J. H., & Cutri, R. M. 1996, *AJ*, 112, 62
Teraäsranta, H., Tornikoski, M., Mujunen, A., et al. 1998, *A&AS*, 132, 305
Villata, M., Raiteri, C. M., Ghisellini, G. et al. 1997 *A&AS* 121, 119
Zanin, R., Carmona, E., Sitarek, J., et al., 2013, *Proc of 33rd ICRC*, Rio de Janeiro, Brazil, Id. 773
Zhang, H., Chen, X., Böttcher, M., Guo, F., & Li, H. 2015, *ApJ*, 804, 58

- ¹ ETH Zurich, CH-8093 Zurich, Switzerland
- ² Università di Udine, and INFN Trieste, I-33100 Udine, Italy
- ³ INAF National Institute for Astrophysics, I-00136 Rome, Italy
- ⁴ Università di Padova and INFN, I-35131 Padova, Italy
- ⁵ Croatian MAGIC Consortium, Rudjer Boskovic Institute, University of Rijeka, University of Split - FESB, University of Zagreb - FER, University of Osijek, Croatia
- ⁶ Saha Institute of Nuclear Physics, 1/AF Bidhannagar, Salt Lake, Sector-1, Kolkata 700064, India
- ⁷ Max-Planck-Institut für Physik, D-80805 München, Germany
- ⁸ Universidad Complutense, E-28040 Madrid, Spain
- ⁹ Inst. de Astrofísica de Canarias, E-38200 La Laguna, Tenerife, Spain
- ¹⁰ Universidad de La Laguna, Dpto. Astrofísica, E-38206 La Laguna, Tenerife, Spain
- ¹¹ University of Łódź, PL-90236 Lodz, Poland
- ¹² Deutsches Elektronen-Synchrotron (DESY), D-15738 Zeuthen, Germany

- ¹³ Institut de Física d'Altes Energies (IFAE), The Barcelona Institute of Science and Technology, Campus UAB, 08193 Bellaterra (Barcelona), Spain
- ¹⁴ Università di Siena, and INFN Pisa, I-53100 Siena, Italy
- ¹⁵ Universität Würzburg, D-97074 Würzburg, Germany
- ¹⁶ Institute for Space Sciences (CSIC/IEEC), E-08193 Barcelona, Spain
- ¹⁷ Technische Universität Dortmund, D-44221 Dortmund, Germany
- ¹⁸ Finnish MAGIC Consortium, Tuorla Observatory, University of Turku and Astronomy Division, University of Oulu, Finland
- ¹⁹ Unitat de Física de les Radiacions, Departament de Física, and CERES-IEEC, Universitat Autònoma de Barcelona, E-08193 Bellaterra, Spain
- ²⁰ Universitat de Barcelona, ICC, IEEC-UB, E-08028 Barcelona, Spain
- ²¹ Japanese MAGIC Consortium, ICRR, The University of Tokyo, Department of Physics and Hakubi Center, Kyoto University, Tokai University, The University of Tokushima, Japan
- ²² Inst. for Nucl. Research and Nucl. Energy, BG-1784 Sofia, Bulgaria
- ²³ Università di Pisa, and INFN Pisa, I-56126 Pisa, Italy
- ²⁴ ICREA and Institute for Space Sciences (CSIC/IEEC), E-08193 Barcelona, Spain
- ²⁵ also at the Department of Physics of Kyoto University, Japan
- ²⁶ now at Centro Brasileiro de Pesquisas Físicas (CBPF/MCTI), R. Dr. Xavier Sigaud, 150 - Urca, Rio de Janeiro - RJ, 22290-180, Brazil
- ²⁷ now at NASA Goddard Space Flight Center, Greenbelt, MD 20771, USA and Department of Physics and Department of Astronomy, University of Maryland, College Park, MD 20742, USA
- ²⁸ Humboldt University of Berlin, Institut für Physik Newtonstr. 15, 12489 Berlin Germany
- ²⁹ also at University of Trieste
- ³⁰ now at Ecole polytechnique fédérale de Lausanne (EPFL), Lausanne, Switzerland
- ³¹ also at Japanese MAGIC Consortium
- ³² now at Finnish Centre for Astronomy with ESO (FINCA), Turku, Finland
- ³³ also at INAF-Trieste and Dept. of Physics & Astronomy, University of Bologna
- ³⁴ Dip. di Fisica e Astronomia, Università di Bologna, Viale Berti Pichat 6/2, I-40127 Bologna, Italy
- ³⁵ INAF – Istituto di Radioastronomia, Via Gobetti 101, I-40129 Bologna, Italy
- ³⁶ KTH Royal Institute of Technology, Department of Physics, AlbaNova, SE-10691 Stockholm, Sweden
- ³⁷ Oskar Klein Centre for Cosmoparticle Physics, AlbaNova, SE-10691 Stockholm, Sweden
- ³⁸ INAF, Osservatorio Astrofisico di Torino, via Osservatorio 20, I-10025 Pino Torinese, Italy
- ³⁹ Tuorla Observatory, Department of Physics and Astronomy, University of Turku, Finland
- ⁴⁰ Aalto University Metsähovi Radio Observatory, Metsähovintie 114, 02540 Kylmälä, Finland
- ⁴¹ Aalto University Department of Radio Science and Engineering, P.O. BOX 13000, FI-00076 AALTO, Finland.
- ⁴² IAR, Boston University, 725 Commonwealth Ave, Boston, 02215, USA
- ⁴³ St.Petersburg State University, Universitetsky prospekt, 28, St. Petersburg, 198504, Russia
- ⁴⁴ Physical Research Laboratory, Ahmedabad 380009, Gujrat, India
- ⁴⁵ Indian Institute of Technology, Gandhinagar 382355, Gujrat, India
- ⁴⁶ Department of Astronomy and Astrophysics, The Pennsylvania State University, 532-D, Davey Laboratory, University Park, PA 16802, USA
- ⁴⁷ Department of Physics, Lancaster University, Lancaster, LA1 4YW, UK.
- ⁴⁸ Astrophysics Research Institute, Liverpool John Moores University, Brownlow Hill, Liverpool, L3 5RF, UK.
- ⁴⁹ Pulkovo Observatory, St. Petersburg, Russia
- ⁵⁰ Crimean Astrophysical Observatory, Crimea