

Hierarchical versus degenerate 2HDM: The LHC run 1 legacy at the onset of run 2

G. C. Dorsch,^{1,2} S. J. Huber,¹ K. Mimasu,¹ and J. M. No¹¹*Department of Physics and Astronomy, University of Sussex, BN1 9QH Brighton, United Kingdom*²*DESY, Notkestrasse 85, D-22607 Hamburg, Germany*

(Received 18 February 2016; published 24 June 2016)

Current discussions of the allowed two-Higgs-doublet model parameter space after LHC run 1 and the prospects for run 2 are commonly phrased in the context of a quasidegenerate spectrum for the new scalars. Here, we discuss the generic situation of a two-Higgs-doublet model with a nondegenerate spectrum for the new scalars. This is highly motivated from a cosmological perspective since it naturally leads to a strongly first-order electroweak phase transition that could explain the matter-antimatter asymmetry in the Universe. While constraints from measurements of Higgs signal strengths do not change, those from searches of new scalar states get modified dramatically once a nondegenerate spectrum is considered.

DOI: [10.1103/PhysRevD.93.115033](https://doi.org/10.1103/PhysRevD.93.115033)

I. INTRODUCTION

While ongoing analyses by both ATLAS and CMS show that the properties of the Higgs particle at $m_h \sim 125$ GeV are close to those expected for the Standard Model (SM) Higgs boson h_{SM} [1–4], the complete nature of the scalar sector responsible for electroweak (EW) symmetry breaking remains to be determined. It is particularly interesting to ascertain whether the scalar sector consists of only one $\text{SU}(2)_L$ doublet or has a richer structure containing additional states. Addressing this question is a very important task for present and future studies at the LHC.

In this work, we concentrate on models with two-Higgs doublets (2HDM) (see Ref. [5] for a review), which appear in many extensions of the SM, such as the minimal supersymmetric SM or scenarios of viable electroweak baryogenesis [6–10]. In recent years, the region of the 2HDM parameter space allowed from Higgs coupling measurements by ATLAS and CMS [11,12] has been widely studied in the literature (see e.g. Refs. [13–32]). Various works have also discussed the constraints coming from LHC searches for neutral and charged scalars A_0 , H_0 , and H^\pm via $A_0 \rightarrow Zh$, $A_0/H_0 \rightarrow \tau\tau$, $A_0/H_0 \rightarrow \gamma\gamma$, $H_0 \rightarrow ZZ/WW$, $H_0 \rightarrow hh$, $H^\pm \rightarrow tb$, and $H^\pm \rightarrow \tau\nu$ (see e.g. Refs. [30,31] for recent analyses). Interpreting these constraints assuming that the new scalars can only decay into SM states requires H_0 , A_0 , and H^\pm to be relatively close in mass. In the following, we refer to this scenario as the *degenerate* 2HDM.

On the other hand, it has recently been shown [10] that sizable mass splittings between the 2HDM scalars (in particular a large $m_{A_0} - m_{H_0}$) favor a strong EW phase transition that could lead to baryogenesis. This provides an important physical motivation for 2HDM scenarios in which new decay channels for the heavier scalars are kinematically allowed (e.g. $A_0 \rightarrow ZH_0$), a situation which has not received enough attention in the literature (see,

however, Refs. [33–36]). In the following, we refer to this scenario as the *hierarchical* 2HDM. It is the purpose of this work to fill this gap, providing a detailed discussion of the constraints on the 2HDM parameter space from 7 and 8 TeV LHC run 1 data, comparing the degenerate and hierarchical 2HDM scenarios. We will show that, besides significantly weakening the bounds from searches for these new scalars into SM states, the sizable mass splittings provide possibilities for novel searches (see e.g. Refs. [37,38]) which can yield complementary limits on the 2HDM parameter space. We assess the interplay between these searches, the standard searches for new scalars decaying directly into SM particles, and the measurement of 125 GeV Higgs signal strengths in constraining 2HDM scenarios. Furthermore, being at the onset of LHC run 2, we also outline the upcoming prospects for direct searches of the neutral scalars H_0 and A_0 in the hierarchical 2HDM at the 13 TeV run of LHC, through the discussion of benchmark plane scenarios.

After a review of the 2HDM in Sec. II, we discuss the measurements of Higgs signal strengths in the context of the 2HDM in Sec. III A. We then demonstrate the impact of the mass spectrum on LHC searches for A_0/H_0 in Secs. III B and III C as well as briefly commenting on H^\pm searches in Sec. III D. In Sec. III E, we analyze the constraints that can be derived from the recent dedicated search of 2HDM neutral scalars with a sizable splitting by the CMS Collaboration [37,38], highlighting the strong complementarity with the standard searches and analyzing the interplay between these and Higgs measurements discussed in Sec. III A. Finally, in Sec. IV, we present benchmark plane scenarios for searches of these new scalars at LHC run 2.

II. (BRIEF) REVIEW OF THE 2HDM

In this section, we discuss the aspects of the 2HDM relevant to our analysis, defining at the same time our

notation. We consider a general 2HDM scalar potential with a softly broken \mathbb{Z}_2 symmetry in the absence of CP violation, which reads

$$V(H_1, H_2) = \mu_1^2 |H_1|^2 + \mu_2^2 |H_2|^2 - \mu^2 [H_1^\dagger H_2 + \text{H.c.}] \\ + \frac{\lambda_1}{2} |H_1|^4 + \frac{\lambda_2}{2} |H_2|^4 + \lambda_3 |H_1|^2 |H_2|^2 \\ + \lambda_4 |H_1^\dagger H_2|^2 + \frac{\lambda_5}{2} [(H_1^\dagger H_2)^2 + \text{H.c.}], \quad (1)$$

where the two scalar $SU(2)_L$ doublets H_j ($j = 1, 2$) may be written as

$$H_j = (\phi_j^+, (v_j + h_j + i\eta_j)/\sqrt{2})^T. \quad (2)$$

The physical scalar sector of a 2HDM is comprised of two CP -even neutral scalars h and H_0 (with $m_{H_0} \geq m_h$), a neutral CP -odd scalar A_0 , and a charged scalar H^\pm . Throughout this work, we mostly assume that h is the 125 GeV Higgs boson (the case of H_0 as the 125 GeV Higgs boson—with h a lighter, undetected state—has been recently discussed in detail in Ref. [32]) and focus on the case where the other new states are heavier than h (the possibility of A_0 being lighter than $m_h = 125$ GeV, although more experimentally constrained, has been explored recently in Ref. [39]). Apart from m_h and $v = 246$ GeV, the scalar potential (1) may be parametrized in terms of the scalar masses m_{H_0} , m_{A_0} , and m_{H^\pm} ; the squared mass scale μ^2 ; and two angles β and α , the former being related to the ratio of vacuum expectation values of the two scalar doublets, $v_{1,2}$, via $\tan \beta \equiv v_2/v_1$ (with $v_1^2 + v_2^2 = v^2$) and the latter parametrizing the mixing between the CP -even states. The relation between the physical states h , H_0 , A_0 , and H^\pm and the states h_j , η_j , and ϕ_j^\pm is given by

$$\begin{aligned} H^\pm &= -s_\beta \phi_1^\pm + c_\beta \phi_2^\pm & A_0 &= -s_\beta \eta_1 + c_\beta \eta_2 \\ h &= -s_\alpha h_1 + c_\alpha h_2 & H_0 &= -c_\alpha h_1 - s_\alpha h_2 \end{aligned}$$

with $s_\beta, c_\beta, s_\alpha, c_\alpha \equiv \sin \beta, \cos \beta, \sin \alpha, \cos \alpha$, respectively. Regarding the couplings of the two doublets $H_{1,2}$ to fermions, the \mathbb{Z}_2 symmetry in (1), even when softly broken by μ^2 , may be used to forbid potentially dangerous tree-level flavor changing neutral currents (FCNCs) by requiring that each fermion type couple to one doublet only [40]. By convention, up-type quarks couple to H_2 . In type I 2HDM, all the other fermions also couple to H_2 , while for type II, down-type quarks and leptons couple to H_1 . There are two more possibilities (depending on the \mathbb{Z}_2 parity assignment for leptons with respect to down-type quarks), but we focus here on types I and II, as they encode the relevant physics of 2HDMs with no tree-level FCNCs.

The parameters $t_\beta \equiv \tan \beta$ and $c_{\beta-\alpha} \equiv \cos(\beta - \alpha)$ control the strength of the couplings of h, H_0, A_0 , and H^\pm to gauge bosons and fermions. Focusing on the neutral scalars, we denote the couplings normalized to the SM values (of h_{SM}) by κ -factors (κ_V for gauge bosons, κ_u for up-type quarks, κ_d for down-type quarks, and κ_ℓ for charged leptons), which read

$$\text{Type - I: } \begin{cases} \kappa_V^h = s_{\beta-\alpha} \\ \kappa_u^h = \kappa_d^h = \kappa_\ell^h = t_\beta^{-1} c_{\beta-\alpha} + s_{\beta-\alpha} \\ \kappa_V^{H_0} = -c_{\beta-\alpha} \\ \kappa_u^{H_0} = \kappa_d^{H_0} = \kappa_\ell^{H_0} = t_\beta^{-1} s_{\beta-\alpha} - c_{\beta-\alpha} \\ \kappa_u^{A_0} = -\kappa_d^{A_0} = -\kappa_\ell^{A_0} = t_\beta^{-1} \end{cases} \quad (3)$$

$$\text{Type - II: } \begin{cases} \kappa_V^h = s_{\beta-\alpha} \\ \kappa_u^h = t_\beta^{-1} c_{\beta-\alpha} + s_{\beta-\alpha} \\ \kappa_d^h = \kappa_\ell^h = s_{\beta-\alpha} - t_\beta c_{\beta-\alpha} \\ \kappa_V^{H_0} = -c_{\beta-\alpha} \\ \kappa_u^{H_0} = t_\beta^{-1} s_{\beta-\alpha} - c_{\beta-\alpha} \\ \kappa_d^{H_0} = \kappa_\ell^{H_0} = -t_\beta s_{\beta-\alpha} - c_{\beta-\alpha} \\ \kappa_u^{A_0} = t_\beta^{-1} \\ \kappa_d^{A_0} = \kappa_\ell^{A_0} = t_\beta. \end{cases} \quad (4)$$

For $c_{\beta-\alpha} \rightarrow 0$, commonly referred to as the 2HDM *alignment* limit [41], h has SM-like couplings to gauge bosons and fermions ($\kappa_i^h \rightarrow 1$, yielding $h \rightarrow h_{\text{SM}}$), while the coupling $H_0 VV$ of H_0 to gauge bosons $V = W^\pm, Z$ vanishes ($\kappa_V^{H_0} \rightarrow 0$).

In order to obtain a viable 2HDM scenario, theoretical constraints from unitarity, perturbativity, and stability/boundedness from below of the scalar potential (1) need to be satisfied. Tree-level stability of the potential $V(H_1, H_2)$ requires $\lambda_1 > 0, \lambda_2 > 0, \lambda_3 > -\sqrt{\lambda_1 \lambda_2}$, and $\lambda_3 + \lambda_4 - |\lambda_5| > -\sqrt{\lambda_1 \lambda_2}$ (see e.g. Ref. [42]). At the same time, tree-level unitarity (for a recent one-loop analysis, leading to slightly more stringent bounds; see Ref. [43]) imposes bounds on the size of various combinations of the quartic couplings λ_i [44], like $|\lambda_3 \pm \lambda_4| < 8\pi$, $|\lambda_3 \pm \lambda_5| < 8\pi$, $|\lambda_3 + 2\lambda_4 \pm 3\lambda_5| < 8\pi$, and $|\lambda_1 + \lambda_2 \pm \sqrt{(\lambda_1 - \lambda_2)^2 + 4\lambda_4^2}| < 16\pi$. Similar (although generically less stringent) bounds on λ_i may be obtained from perturbativity arguments. We may express λ_i in terms of the physical scalar masses, the mixing angles α, β , and μ^2 :

$$\lambda_1 = \frac{1}{v^2 c_\beta^2} (-\mu^2 t_\beta + m_h^2 s_\alpha^2 + m_{H_0}^2 c_\alpha^2), \quad (5)$$

$$\lambda_2 = \frac{1}{v^2 s_\beta^2} (-\mu^2 t_\beta^{-1} + m_h^2 c_\alpha^2 + m_{H_0}^2 s_\alpha^2), \quad (6)$$

$$\lambda_3 = \frac{1}{v^2} \left[-\frac{2\mu^2}{s_{2\beta}} + 2m_{H^\pm}^2 + (m_{H^0}^2 - m_h^2) \frac{s_{2\alpha}}{s_{2\beta}} \right], \quad (7)$$

$$\lambda_4 = \frac{1}{v^2} \left(\frac{2\mu^2}{s_{2\beta}} + m_{A^0}^2 - 2m_{H^\pm}^2 \right), \quad (8)$$

$$\lambda_5 = \frac{1}{v^2} \left(\frac{2\mu^2}{s_{2\beta}} - m_{A^0}^2 \right). \quad (9)$$

As seen from (5)–(9), for a given set of values for m_{H_0} , m_{A_0} , m_{H^\pm} , t_β , and $c_{\beta-\alpha}$, only a certain range for μ^2 is allowed by the combination of these theoretical constraints. In particular, $\lambda_{1,2} > 0$ directly imply an upper bound on μ^2 from (5) and (6). It is, however, possible that no value of μ^2 can satisfy all three theoretical requirements simultaneously, in which case such a set of values for the scalar masses and mixing angles would not be viable. If an allowed μ^2 range exists, the size of trilinear scalar couplings such as λ_{H_0hh} and $\lambda_{H_0A_0A_0}$ (which control the partial widths $\Gamma_{H_0 \rightarrow hh}$, $\Gamma_{H_0 \rightarrow A_0A_0}$ when these decays are kinematically allowed) or $\lambda_{hH^+H^-}$ (which controls the size of the charged scalar loop contribution to the $h \rightarrow \gamma\gamma$ decay amplitude, given by Δ_γ^\pm) depend on the value of μ^2 . Indeed, the trilinear couplings λ_{H_0hh} and $\lambda_{H_0A_0A_0}$ are given by

$$v\lambda_{H_0hh} = \frac{2c_{\beta-\alpha}}{s_{2\beta}} \left[\left(1 - 3 \frac{s_{2\alpha}}{s_{2\beta}} \right) \mu^2 + (2m_h^2 + m_{H_0}^2) \frac{s_{2\alpha}}{2} \right] \quad (10)$$

$$v\lambda_{H_0A_0A_0} = 2 \left[c_{\beta-\alpha} (2m_{A_0}^2 - m_{H_0}^2) - 2 \left(s_{\beta-\alpha} \frac{c_{2\beta}}{s_{2\beta}} - c_{\beta-\alpha} \right) \left(m_{H_0}^2 - \frac{\mu^2}{s_{\beta}c_{\beta}} \right) \right]. \quad (11)$$

Apart from vanishing in the alignment limit, if $s_{2\beta} - 3s_{2\alpha} \neq 0$, the coupling λ_{H_0hh} also vanishes for $\mu^2 = (2m_h^2 + m_{H_0}^2)(s_{2\alpha}s_{2\beta})/(6s_{2\alpha} - 2s_{2\beta})$, if such value of μ^2 lies within the allowed range. Similarly, in the alignment limit, $\lambda_{H_0A_0A_0}$ vanishes for $t_\beta = 1$ or $\mu^2 = m_{H_0}^2 s_{\beta}c_{\beta}$. The trilinear coupling $\lambda_{hH^+H^-}$ reads

$$v\lambda_{hH^+H^-} = \left[s_{\beta-\alpha} (m_h^2 - 2m_{H^\pm}^2) - 2 \left(c_{\beta-\alpha} \frac{c_{2\beta}}{s_{2\beta}} + s_{\beta-\alpha} \right) \left(m_h^2 - \frac{\mu^2}{s_{\beta}c_{\beta}} \right) \right], \quad (12)$$

so that Δ_γ^\pm inherits a dependence on μ^2 and other 2HDM parameters besides $m_{H^\pm}^2$ through $\lambda_{hH^+H^-}$. These trilinear couplings illustrate the phenomenological impact of the soft \mathbb{Z}_2 -breaking parameter in the 2HDM, which will be analyzed in more detail in Sec. III.

III. HIERARCHICAL VS DEGENERATE 2HDM: THE LHC RUN 1 LEGACY

Let us now concentrate on the mass spectrum of the 2HDM. We first note that constraints from measurements of EW precision observables (EWPO), in particular of the T -parameter, generically require H^\pm to be relatively degenerate with either A_0 or H_0 [45,46]. From a phenomenological perspective, we can then distinguish between a degenerate spectrum where all mass splittings among the new scalar states are small, $|m_{A_0} - m_{H_0}| \ll m_Z$, and a hierarchical spectrum for which the mass splitting among the new neutral scalars is sizable, $|m_{A_0} - m_{H_0}| \gtrsim m_Z$.

The main phenomenological feature of a hierarchical 2HDM spectrum is that the decays $\varphi_i \rightarrow \varphi_j V$, with $\varphi_{i,j} = H_0, A_0, H^\pm$ ($i \neq j$), and $V = W^\pm, Z$ become kinematically allowed and generically yield the dominant branching fraction, with the decays into SM states comparatively suppressed. These considerations motivate performing a comparison of the allowed 2HDM parameter space for both types of spectra, assessing the impact of sizeable mass splitting(s).

In this respect, key probes of 2HDM scenarios are CMS and ATLAS measurements of Higgs signal strengths and searches for new scalar states at the LHC, which we analyze in detail in the next sections. When performing the analysis of LHC constraints (as well as the aforementioned theoretical constraints from vacuum stability, perturbativity, and unitarity), we consider either $m_{H^\pm} = m_{A_0}$ or $m_{H^\pm} = m_{H_0}$ which are simplifying limits motivated by EWPO (see also the discussion in Sec. III D).

A. Higgs signal strengths in the 2HDM

The values for the Higgs signal strengths measured by the ATLAS and CMS experiments during the 7 and 8 TeV LHC runs set an important constraint on the 2HDM parameter space [11] (see also Refs. [13,14,16,18–20,26,27,30]). Since, in the 2HDM, the Higgs couplings are simply rescaled with respect to the SM values, without modifying the kinematics of production or decay, the model prediction for the signal strength in a final state or experimental category xx can be written as

$$\mu_{xx}^{2\text{HDM}} = \sum_i \epsilon_i \times \mu_{xx}^i. \quad (13)$$

Here, ϵ_i corresponds to the relative contribution of a particular Higgs production mode, i , to the observable, and μ_{xx}^i is the 2HDM signal strength for that production mode,

$$\mu_{xx}^i = \frac{[\sigma_i(pp \rightarrow h) \times \text{BR}(h \rightarrow xx)]_{2\text{HDM}}}{[\sigma_i(pp \rightarrow h) \times \text{BR}(h \rightarrow xx)]_{\text{SM}}}. \quad (14)$$

This is to be compared with the values obtained by ATLAS and CMS analyses in the relevant detection channels,

namely $h \rightarrow WW^*$ [47–51], $h \rightarrow ZZ^*$ [48,52,53], $h \rightarrow \gamma\gamma$ [54,55], $h \rightarrow \bar{b}b$ [56,57], and $h \rightarrow \tau\tau$ [58,59], with possibly numerous experimental categories therein. The various μ_{xx}^l are directly obtained from the κ_x^h factors in (3) and (4) for the corresponding final state and depend only on $c_{\beta-\alpha}$ and t_β . The sole exceptions are experimental categories within a $\gamma\gamma$ final state, since $\text{BR}(h \rightarrow \gamma\gamma)$ also involves the contribution to the $h \rightarrow \gamma\gamma$ decay amplitude from the charged scalar loop, Δ_γ^\pm , which introduces a dependence on μ^2 and other physical parameters via the trilinear coupling, $\lambda_{hH^+H^-}$. As a result, a fully self-consistent comparison to the experimental data would require a generalized $\Delta\chi^2$ likelihood fit in a multidimensional parameter space subject to the theoretical constraints on μ^2 discussed above. These constraints lead to an indirect dependence on the full 2HDM parameter space, meaning that all possible experimental constraints on the model such as direct heavy Higgs searches and EW precision observables would have to be included in the general case. Recent studies [60–62] have shown that the charged scalar loop can give a sizable (5%–10%) contribution to the $h \rightarrow \gamma\gamma$ decay amplitude, in particular due to its potential nondecoupling behavior. However, its impact on the global Higgs signal strength fit is expected to be at most mild, and so we adopt a simplified approach of neglecting this term in the global fit by setting $\lambda_{hH^+H^-} = 0$.

The Higgs signal strength constraints can then be obtained by performing a $\Delta\chi^2$ likelihood fit to the 2HDM parameters $c_{\beta-\alpha}$ and t_β , for which we use the public codes LILITH [63] and HIGGSIGNALS [64,65]. The values of ϵ_i in (14) may be obtained from the experimental analyses and are provided in both these programs (e.g. for HIGGSIGNALS, they may be found in Appendix A of Ref. [65]). The results are shown in Fig. 1 for type I (left) and type II (right) 2HDM. The green areas

correspond to the 95% C.L. allowed region from LILITH, while the hatched-purple ones are those from HIGGSIGNALS. Both show good agreement with analogous fits performed by CMS and ATLAS [11,12], with the fit from LILITH being slightly more constraining than both HIGGSIGNALS and ATLAS/CMS. In type I, a sizable departure from alignment is allowed as soon as $t_\beta \gtrsim 1$, and the limit on $c_{\beta-\alpha}$ becomes both independent of t_β and symmetric around $c_{\beta-\alpha} = 0$ for $t_\beta \gg 1$, which can be understood from (3). For type II, there are two distinct allowed regions: (i) the region close to the alignment limit $|c_{\beta-\alpha}| \ll 1$ corresponding to a SM-like Higgs h , with a mild preference for $c_{\beta-\alpha} > 0$ and $t_\beta \sim 1$, and (ii) the *wrong-sign* scenario $s_{\beta+\alpha} \sim 1$, for which $\kappa_d^h < 0$, and $|1 + \kappa_d^h| \ll 1$ (see e.g. Ref. [62] for a detailed discussion of this limit, possible only in type II).

B. LHC searches for A_0 into SM states

We discuss now the limits on the 2HDM parameter space from ATLAS and CMS searches of A_0 decaying via $A_0 \rightarrow Zh$ ($h \rightarrow \bar{b}b$, $h \rightarrow \tau\tau$) [66,67], via $A_0 \rightarrow \gamma\gamma$ [68,69] and $A_0 \rightarrow \tau\tau$ [70,71]. For the $A_0 \rightarrow \tau\tau$ searches, the production of A_0 in association with a $\bar{b}b$ pair is taken into account by the ATLAS/CMS experimental analyses in addition to production through gluon fusion, the former being important for type II at large values of t_β . Furthermore, we stress that, while the search via $A_0 \rightarrow Zh$ vetoes any b-tagged jets beyond those from $h \rightarrow \bar{b}b$ (see e.g. Ref. [66]), the b -jets resulting from the $pp \rightarrow \bar{b}bA_0$ process generically have large rapidity values and consequently yield a very low b-tagging efficiency [72]. Thus, we also consider $\bar{b}b$ -associated production of A_0 in the $A_0 \rightarrow Zh$ searches and do not implement a b-tagging efficiency suppression in this case.

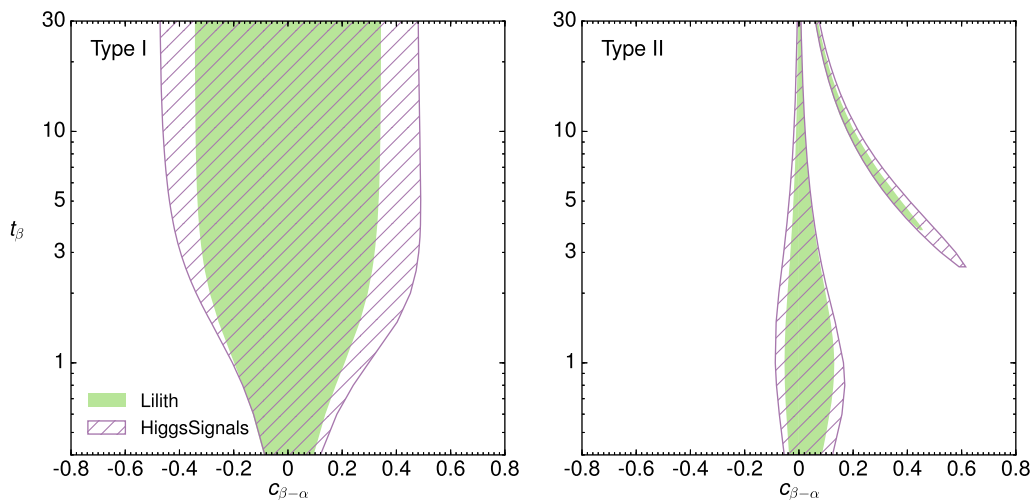


FIG. 1. 95% C.L. regions from a likelihood fit to Higgs signal strengths in the $(c_{\beta-\alpha}, t_\beta)$ plane, for type I (left) and type II (right) 2HDM, using LILITH (solid-green region) and HIGGSIGNALS (hatched-purple region). See the text for details on the fit.

In order to derive the bounds on the 2HDM parameter space, we compute the A_0 production cross section in gluon fusion and in association with $\bar{b}b$ at next-to-next-to-leading order (NNLO) in QCD with `SuSHi` [73] for types I and II as a function of t_β and m_{A_0} and then use `2HDMC` [74] to compute the branching fractions for $A_0 \rightarrow \tau\tau$, $A_0 \rightarrow \gamma\gamma$, $A_0 \rightarrow Zh$, and $h \rightarrow \bar{b}b, \tau\tau$ as a function of t_β , $c_{\beta-\alpha}$, m_{A_0} , and m_{H_0} . The 95% C.L. exclusion region in the $(c_{\beta-\alpha}, t_\beta)$ plane resulting from these searches is shown in Fig. 2 for different values of m_{A_0} and $m_{A_0} - m_{H_0}$ and discussed below. The progressive weakening of each search with increasing mass splitting is a ubiquitous feature of our results (see also Figs. 4 and 5), such that the limit corresponding to a spectrum with a greater mass splitting is always contained within the limit of a less split scenario. We therefore permit ourselves to not distinguish the mass scenarios for a given final state in each figure since it is implicit that the best limit always corresponds to the degenerate case and the worst to the most hierarchical. In any case, the important information lies in the union of the limits for each mass scenario which we shade in a particular color.

Let us consider first a high mass scenario for A_0 , above the $\bar{t}t$ threshold: The exclusion region for $m_{A_0} = 500$ GeV in types I and II is shown, respectively, in Fig. 2's top left and top right. The only sensitive channel above the $\bar{t}t$ threshold is $A_0 \rightarrow Zh$, and for type II also $A_0 \rightarrow \tau\tau$ in $\bar{b}b$ -associated production. Nevertheless, we see that for low/moderate t_β , these searches only constrain values of $|c_{\beta-\alpha}| \gtrsim 0.15$. The green region corresponds to the exclusion for $m_{H_0} = 500$ GeV, when A_0 only decays into SM states. As m_{H_0} decreases and the decay $A_0 \rightarrow H_0 Z$ becomes kinematically allowed, the current limits from searches of SM decay channels weaken significantly, as the orange and purple regions in Fig. 2 (top) show, respectively, for $m_{H_0} = 300$ GeV and $m_{H_0} = 150$ GeV.

The impact of a sizable $m_{A_0} - m_{H_0}$ splitting is even more important for m_{A_0} below the $\bar{t}t$ threshold: The excluded region for $m_{A_0} = 300$ GeV is shown in Fig. 2 (middle) for type I (left) and type II (right), both in the degenerate scenario $m_{H_0} = 300$ GeV (green region) and for a hierarchical scenario with $m_{H_0} = 150$ GeV (purple region). In the former, the limits from $A_0 \rightarrow Zh$ searches are stringent, ruling out $|c_{\beta-\alpha}| \gtrsim 0.02$ for $t_\beta < 6$ in type I. Even for $c_{\beta-\alpha} \rightarrow 0$, $A_0 \rightarrow \gamma\gamma$, and $A_0 \rightarrow \tau\tau$, searches constrain the regions of $t_\beta \lesssim 2$ and $t_\beta \lesssim 3$, respectively, for types I and II. In contrast, for the hierarchical scenario, the $A_0 \rightarrow \gamma\gamma$ and $A_0 \rightarrow \tau\tau$ searches only constrain values of $t_\beta \lesssim 0.5$, while the sensitivity of the $A_0 \rightarrow Zh$ searches also reduces drastically.

Finally, we also present the limits for a light A_0 , with $m_{A_0} = 150$ GeV in Fig. 2 (bottom). In this case, we do not consider a hierarchical 2HDM scenario (with A_0 being the

heavier state), as it would require $c_{\beta-\alpha} \rightarrow 0$ to avoid nonobservation of H_0 at LEP (we will, however, briefly discuss this region of parameter space in Sec. III E). Both for type I (left) and type II (right), the $A_0 \rightarrow \tau\tau$ and $A_0 \rightarrow \gamma\gamma$ searches yield the constraint $t_\beta \gtrsim 1.5$, while for type II the searches for $A_0 \rightarrow \tau\tau$ in $\bar{b}b$ -associated production also yield a limit $t_\beta < 10$.

The above discussion highlights the fact that, in the presence of a sizable mass splitting $m_{A_0} - m_{H_0}$, the sensitivity of searches for A_0 decaying into SM final states becomes highly suppressed, with the sole exception of $A_0 \rightarrow \tau\tau$ searches in $\bar{b}b$ -associated production at high t_β in type II 2HDM. Let us, however, emphasize that the lighter state in the hierarchical 2HDM scenario, in this case H_0 , would decay solely into SM states. Thus, the constraints on the parameter space from searches of H_0 into SM final states would fully apply for a hierarchical scenario with $m_{A_0} - m_{H_0} > 0$. LHC searches for H_0 will be analyzed in Sec. III C.

Before moving on to the next section, let us discuss the impact of theoretical constraints from unitarity, perturbativity, and stability of the 2HDM scalar potential on Fig. 2, where the theoretically excluded regions are shown in gray. Focusing on the case $m_{H^\pm} = m_{A_0}$, and defining $m_{A_0}^2 - m_{H_0}^2 \equiv \Delta^2 \geq 0$, Fig. 2 shows that the exclusion becomes more important as m_{H_0} increases, particularly for $t_\beta \gg 1$. The departure from alignment also has a strong impact on the theoretically viable parameter space, especially for $c_{\beta-\alpha} < 0$. These features may be understood from the interplay of $\lambda_1 > 0$ and various unitarity limits. Writing λ_1 as

$$\lambda_1 v^2 = m_h^2 - t_\beta(1 + t_\beta^2)\Omega^2 - (m_{H_0}^2 - m_h^2)[c_{\beta-\alpha}^2(t_\beta^2 - 1) - 2t_\beta s_{\beta-\alpha} c_{\beta-\alpha}] \quad (15)$$

with $\Omega^2 \equiv \mu^2 - m_{H_0}^2 s_\beta c_\beta$, we see that for $m_{H_0}^2 \gg m_h^2$ [neglecting m_h^2 in (15)] and $t_\beta > 1$, $\Omega^2 < 0$ is required to satisfy $\lambda_1 > 0$ for either $c_{\beta-\alpha} < 0$ or $c_{\beta-\alpha} t_\beta \gg 1$. This in turn impacts the unitarity requirements, e.g.

$$\begin{aligned} |\lambda_3 + \lambda_4| &\sim \left| \frac{\Delta^2}{v^2} + \frac{m_{H_0}^2 c_{\beta-\alpha}}{v^2} [s_{\beta-\alpha}(t_\beta - t_\beta^{-1}) - 2c_{\beta-\alpha}] \right| \\ &< 8\pi |\lambda_3 + 2\lambda_4 + 3\lambda_5| \sim \left| -\frac{3\Delta^2}{v^2} + \frac{4}{s_\beta c_\beta} \frac{\Omega^2}{v^2} \right. \\ &\quad \left. + \frac{m_{H_0}^2}{v^2} c_{\beta-\alpha} [s_{\beta-\alpha}(t_\beta - t_\beta^{-1}) - 2c_{\beta-\alpha}] \right| < 8\pi, \end{aligned} \quad (16)$$

which are then violated for $t_\beta \gg 1$ and/or $m_{H_0}^2 \gg v^2$, as no cancellation among terms is possible in both $|\lambda_3 + \lambda_4|$ and $|\lambda_3 + 2\lambda_4 + 3\lambda_5|$ (since $\Delta^2 \geq 0$, $\Omega^2 < 0$).

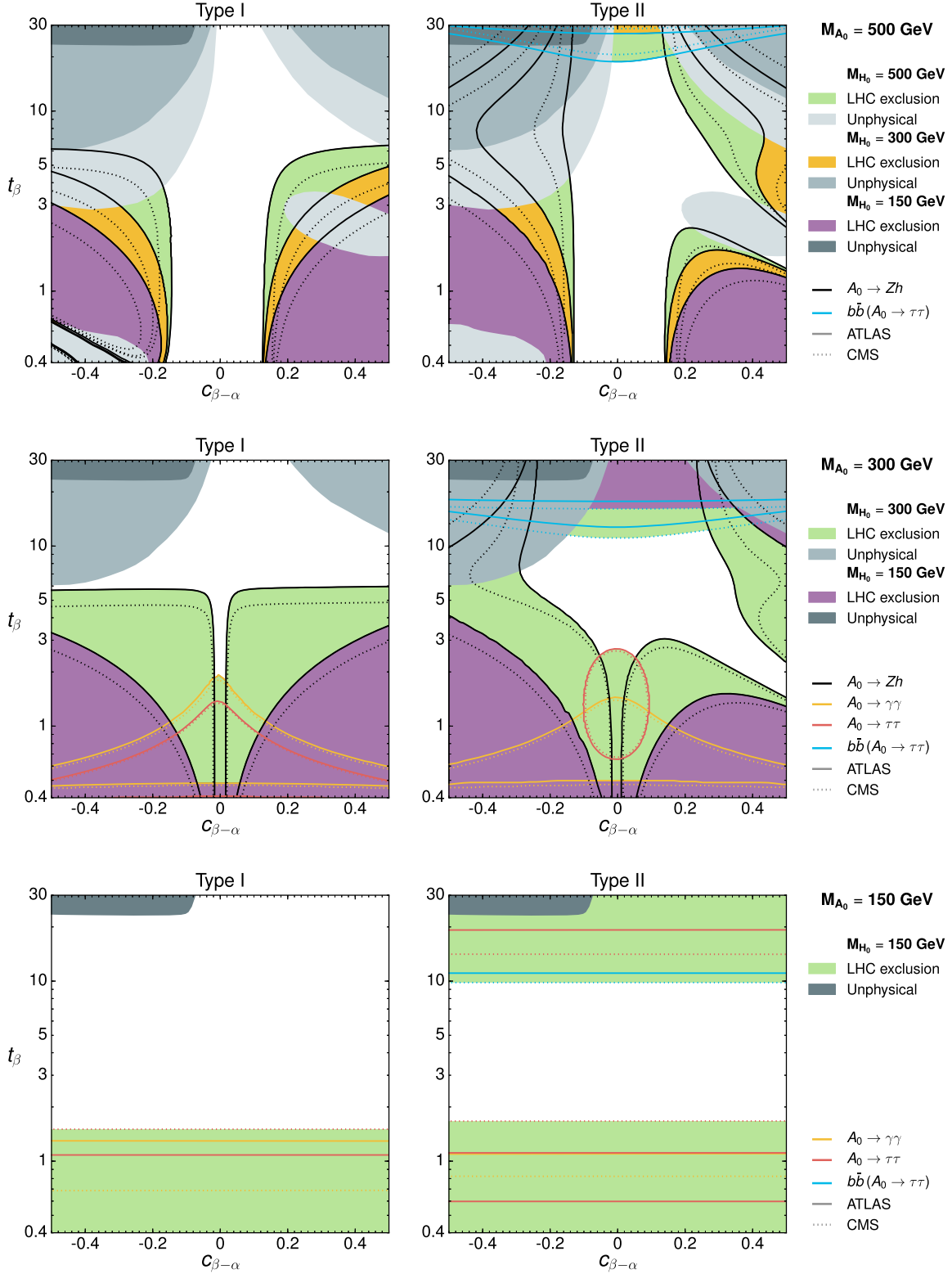


FIG. 2. Current 95% C.L. excluded region by ATLAS (solid lines) and CMS (dashed lines), respectively, for $m_{A_0} = 500, 300, 150$ GeV (top/middle/bottom) and for 2HDM types I/II (left/right), coming from searches of $gg/b\bar{b} \rightarrow A_0 \rightarrow Zh(h \rightarrow b\bar{b})$ (black lines), $gg \rightarrow A_0 \rightarrow \gamma\gamma$ (yellow lines), $gg \rightarrow A_0 \rightarrow \tau\tau$ (red lines), and $b\bar{b} \rightarrow A_0 \rightarrow \tau\tau$ (light-blue lines). In each case, the limits in the degenerate scenario $m_{H_0} = m_{A_0}$ are shown in green, while those for the hierarchical scenario(s) are shown in purple/orange. The various gray regions correspond to the theoretically excluded regions for the degenerate and hierarchical 2HDM scenarios (darker gray as m_{H_0} is lower). As discussed in the text, limits from a given search get progressively weaker with increasing mass splitting and are always nested within each other, starting from the degenerate scenario and moving toward increasingly hierarchical mass spectra.

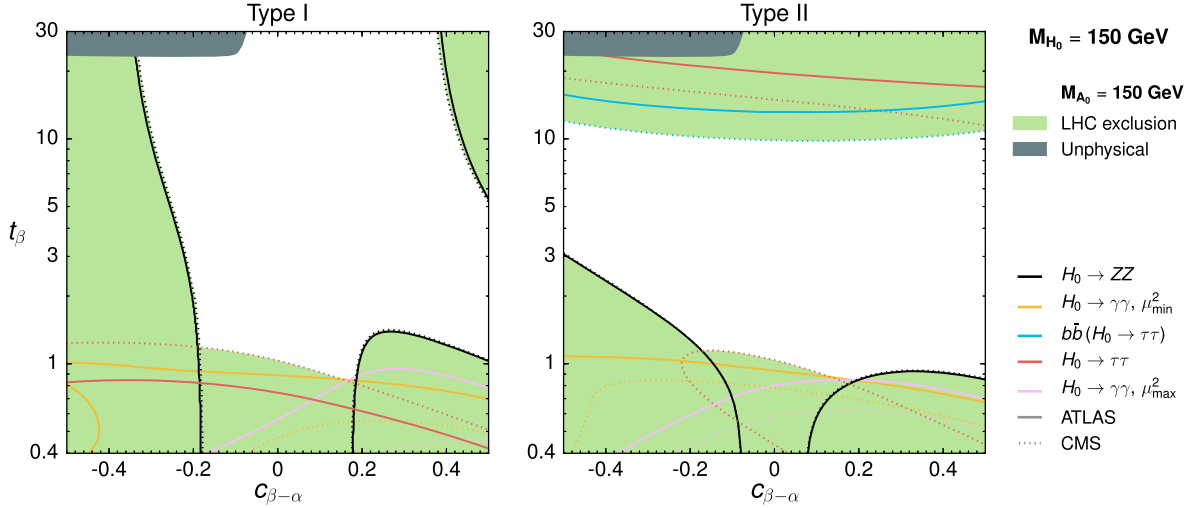


FIG. 3. Current 95% C.L. excluded region (in green) by ATLAS (solid lines) and CMS (dashed lines), respectively, for $m_{H_0} = 150$ GeV and 2HDM types I/II (left/right), coming from searches of $gg/b\bar{b} \rightarrow H_0 \rightarrow WW/ZZ$ (black lines), $gg \rightarrow A_0 \rightarrow \tau\tau$ (red lines), $b\bar{b} \rightarrow A_0 \rightarrow \tau\tau$ (light-blue lines), and $gg \rightarrow A_0 \rightarrow \gamma\gamma$, both for $\mu^2 = \mu_{\min}^2/\mu_{\max}^2$ (yellow/pink lines). The gray region is theoretically excluded.

We note that the above requirement $\Omega^2 < 0$ to satisfy $\lambda_1 > 0$ may be avoided for $c_{\beta-\alpha}(t_\beta^2 - 1) - 2t_\beta s_{\beta-\alpha} \sim 0$, for which the last term in (15) vanishes. This cancellation, which happens for $c_{\beta-\alpha} = 2t_\beta/(1 + t_\beta^2)$, is observed for $m_{H_0} = 500$ GeV and $c_{\beta-\alpha} > 0$ in Fig. 2 (top). We also note that in exact alignment $c_{\beta-\alpha} = 0$, $\Omega^2 = 0$ automatically yields $\lambda_1 > 0$ (and all other boundedness-from-below requirements are also trivially satisfied for $\Delta^2 \geq 0$). The unitarity constraints are then only violated for $\Delta^2 \gg v^2$, and thus $c_{\beta-\alpha} = 0$ is always allowed in Fig. 2.

C. LHC searches for H_0 into SM states

We turn now to analyzing the constraints from LHC searches for H_0 . The relevant searches to be considered are $H_0 \rightarrow ZZ \rightarrow \ell\ell\ell\ell$ [75] (and in the low mass region also $H_0 \rightarrow WW$ [76]), $H_0 \rightarrow hh \rightarrow \bar{b}b\gamma\gamma$ [77] by ATLAS and $H_0 \rightarrow WW, ZZ$ [78] (both low and high mass regions), $H_0 \rightarrow hh \rightarrow \bar{b}b\gamma\gamma$ [79], and $H_0 \rightarrow hh \rightarrow \bar{b}b\bar{b}b$ [80] by CMS. In all these searches, $\bar{b}b$ -associated production of H_0 is implicitly included¹ together with gluon fusion. In addition, the ATLAS/CMS searches via $A_0/H_0 \rightarrow \gamma\gamma$ [68,69] and via $A_0/H_0 \rightarrow \tau\tau$ [70,71] discussed in the previous section also apply in this case.

As in the previous section, we use SusHi to compute the gluon fusion and $\bar{b}b$ -associated H_0 production cross sections at NNLO in QCD for types I and II as a function of $c_{\beta-\alpha}$, t_β ,

and m_{H_0} and then use 2HDMC to compute the branching fractions for $H_0 \rightarrow \tau\tau$, $H_0 \rightarrow \gamma\gamma$, $H_0 \rightarrow ZZ$, $H_0 \rightarrow hh$, and $h \rightarrow \bar{b}b, \gamma\gamma$ as a function of $c_{\beta-\alpha}$, t_β , m_{H_0} , m_{A_0} , and μ^2 . We stress that, contrary to the A_0 case, the value of μ^2 has a significant impact on the H_0 branching fractions via the modification of the trilinear coupling $\lambda_{H_0 hh}$, which changes the $H_0 \rightarrow hh$ partial width (recall the discussion at the end of Sec. II). In order to account for the dependence of μ^2 on the 95% C.L. limits, we compute the theoretically viable μ^2 range as a function of $c_{\beta-\alpha}$, t_β , m_{H_0} , and m_{A_0} and derive the bounds on the values of μ^2 that respectively minimize (μ_{\min}^2) and maximize (μ_{\max}^2) the $H_0 \rightarrow hh$ branching fraction within the allowed μ^2 range.

We begin now by discussing the scenario with a light H_0 and consider the 95% C.L. exclusion region for $m_{H_0} = 150$ GeV in the degenerate scenario, as shown in Fig. 3. Due to the absence of the $H_0 \rightarrow hh$ decay in this case, the $H_0 \rightarrow ZZ^*$ and $H_0 \rightarrow \tau\tau$ branching fractions are not sensitive to the value of μ^2 , and only $H_0 \rightarrow \gamma\gamma$ is mildly dependent via the H^\pm loop contribution. Nevertheless, Fig. 3 shows that the important limits in the $c_{\beta-\alpha}$, t_β plane are given by $H_0 \rightarrow ZZ^*$ and $H_0 \rightarrow \tau\tau$ searches, with $H_0 \rightarrow \gamma\gamma$ less sensitive. As has been emphasized in Sec. III B, the present limits are complementary to those from A_0 searches in the hierarchical 2HDM, e.g. for the $(m_{A_0}, m_{H_0}) = (300, 150)$ GeV and $(500, 150)$ GeV benchmarks considered in Fig. 2.

In Fig. 4, we show the limits from H_0 searches for $m_{H_0} = 300$ GeV, for types I/II (left/right). Here, the presence of the decay $H_0 \rightarrow hh$ requires us to take into account the μ^2 dependence in the limit extraction, and we show the limits for $\mu^2 = \mu_{\min}^2$ (top) and $\mu^2 = \mu_{\max}^2$ (bottom).

¹For $H_0 \rightarrow WW, ZZ$ searches, $\bar{b}b$ -associated production generally fails the vector boson fusion and V -associated production analysis tags and so is included in the gluon fusion category. For $H_0 \rightarrow hh$ searches, the analysis is inclusive with respect to H_0 production.

In the former case, the strongest limits come from $H_0 \rightarrow ZZ$ searches, with $H_0 \rightarrow hh$ playing no relevant role because of its suppressed branching fraction. Moreover, in this case, the presence of a sizable $m_{H_0} - m_{A_0}$ splitting does lead to a significant reduction of the limits on the 2HDM parameter space from these searches. In contrast, for $\mu^2 = \mu_{\max}^2$, the $H_0 \rightarrow hh$ searches provide the dominant constraint for low and moderate t_β , and these limits do not change significantly in a hierarchical 2HDM scenario, as the branching fraction of $H_0 \rightarrow hh$ is still the dominant one in this case. A similar situation occurs for $m_{H_0} = 500$ GeV, as shown in Fig. 5. Again, for $\mu^2 = \mu_{\min}^2$ (top), $H_0 \rightarrow ZZ$ searches provide the only meaningful constraint, which gets significantly weakened in the hierarchical scenario $m_{H_0} - m_{A_0} \gg m_Z$. For $\mu^2 = \mu_{\max}^2$, the LHC searches for

$H_0 \rightarrow hh$ in $b\bar{b}b\bar{b}$ and $b\bar{b}\gamma\gamma$ are the most constraining, being particularly sensitive around $t_\beta \sim 1$, and the limits only get mildly weakened in the hierarchical 2HDM scenario. In addition, for $m_{H_0} = 500$ GeV, there is no appreciable difference between types I and II for low and moderate t_β , with $b\bar{b}$ -associated production of H_0 in $H_0 \rightarrow \tau\tau$ searches constraining the $t_\beta \gg 1$ region in type II.

Contrary to Figs. 2, 4 and 5 do not show the would-be limits on the $(c_{\beta-\alpha}, t_\beta)$ plane from searches of H_0 in regions which are not viable theoretically; these limits depend crucially on the value of μ^2 (in contrast with the situation for A_0 searches discussed in Sec. III B), and the theoretical bounds correspond precisely to the absence of an allowed μ^2 range.

Figures 4 and 5 highlight that, for $\Delta^2 < 0$ (and $m_{H^\pm}^2 = m_{H_0}^2$), the theoretical bounds from stability,

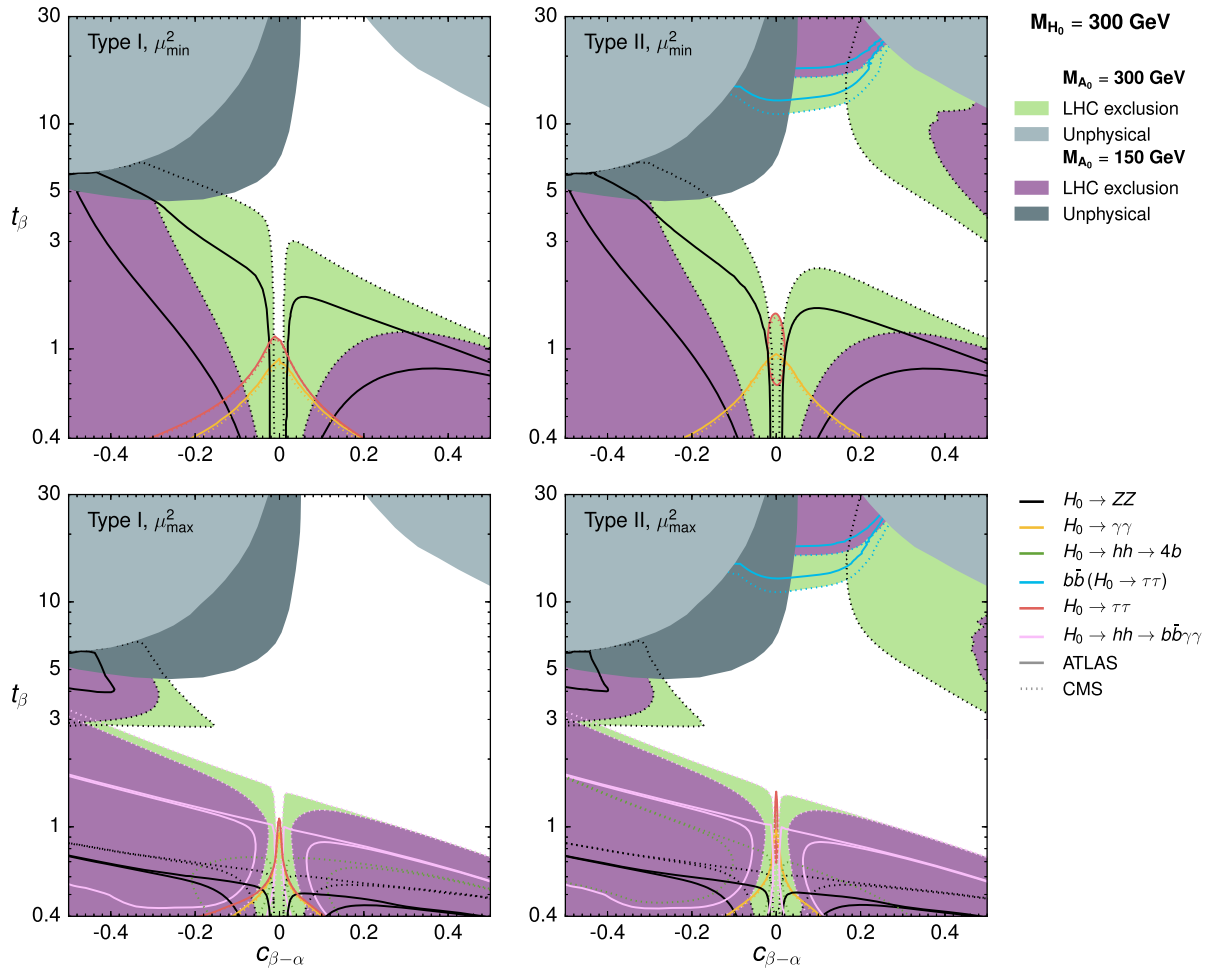


FIG. 4. Current 95% C.L. excluded region by ATLAS (solid lines) and CMS (dashed lines) for $m_{H_0} = 300$ GeV and respectively for 2HDM types I/II (left/right) in the case $\mu^2 = \mu_{\min}^2 / \mu^2 = \mu_{\max}^2$ (top/bottom). The limits come from searches of $gg/b\bar{b} \rightarrow H_0 \rightarrow WW/ZZ$ (black lines), $gg \rightarrow A_0 \rightarrow \tau\tau$ (red lines), $b\bar{b} \rightarrow A_0 \rightarrow \tau\tau$ (light-blue lines), $gg \rightarrow A_0 \rightarrow \gamma\gamma$ (yellow lines), $gg/b\bar{b} \rightarrow H_0 \rightarrow hh \rightarrow b\bar{b}b\bar{b}$ (dark-green lines), and $gg/b\bar{b} \rightarrow H_0 \rightarrow hh \rightarrow b\bar{b}\gamma\gamma$ (pink lines). The two scenarios considered are $m_{H_0} = m_{A_0}$ (degenerate: green exclusion region) and $m_{H_0} = 150$ GeV (hierarchical: purple exclusion region). The light/dark gray areas correspond to the theoretically excluded regions for the degenerate/hierarchical 2HDM scenarios. As discussed in the text, limits from a given search get progressively weaker with increasing mass splitting and are always nested within each other, starting from the degenerate scenario and moving toward increasingly hierarchical mass spectra.

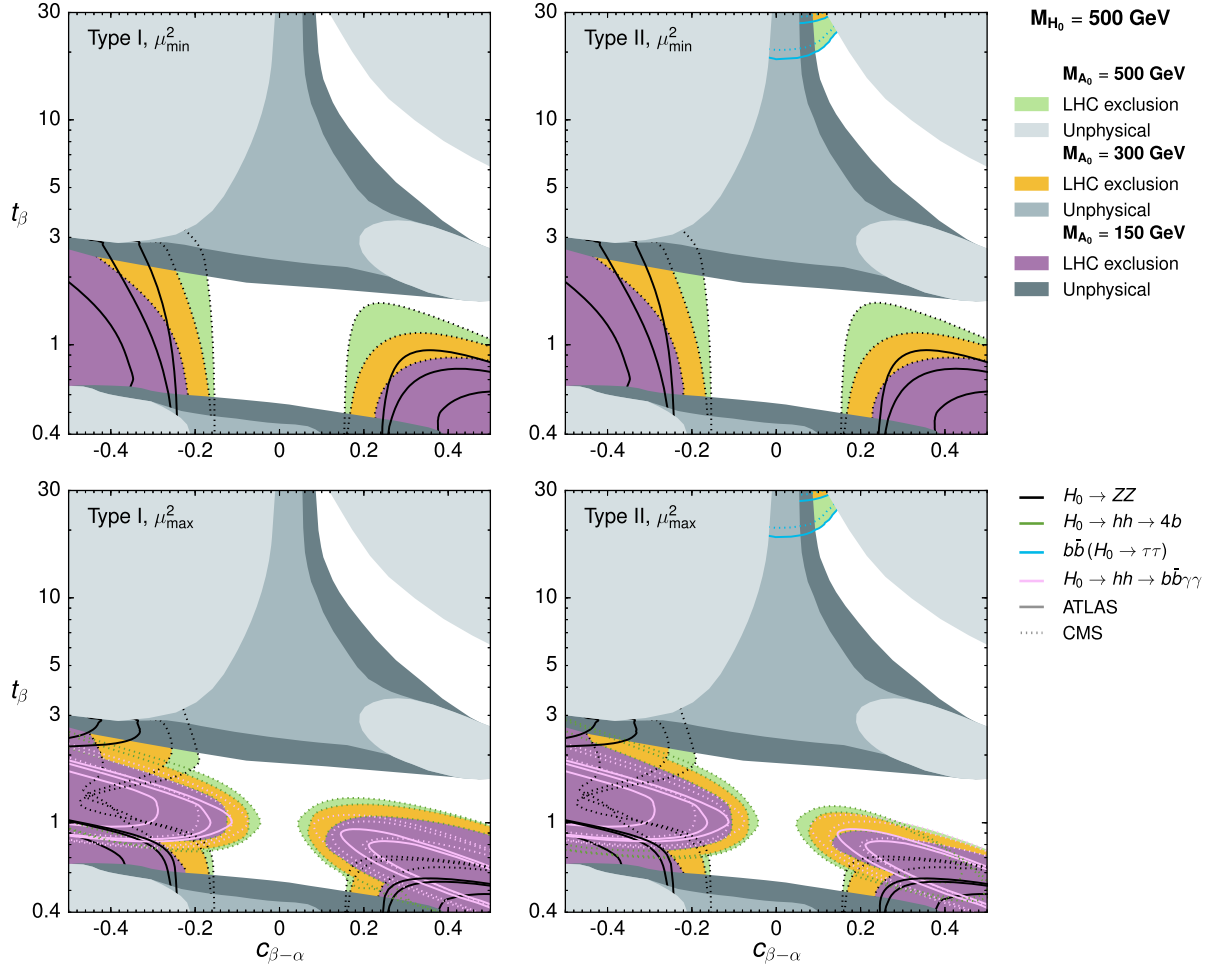


FIG. 5. Same as Fig. 4 but for $m_{H_0} = 500$ GeV. The limits come from searches of $gg/b\bar{b} \rightarrow H_0 \rightarrow WW/ZZ$ (black lines), $b\bar{b} \rightarrow A_0 \rightarrow \tau\tau$ (light-blue lines), $gg/b\bar{b} \rightarrow H_0 \rightarrow hh \rightarrow b\bar{b}b\bar{b}$ (dark-green lines), and $gg/b\bar{b} \rightarrow H_0 \rightarrow hh \rightarrow b\bar{b}\gamma\gamma$ (pink lines). The three scenarios considered are $m_{H_0} = m_{A_0}$ (degenerate: green exclusion region), $m_{H_0} = 300$ GeV (moderately hierarchical: orange exclusion region), and $m_{H_0} = 150$ GeV (very hierarchical: purple exclusion region).

unitarity, and perturbativity are significantly more important than for the previously discussed $\Delta^2 > 0$ case and in particular constrain the alignment limit $c_{\beta-\alpha} = 0$. The stability conditions for $c_{\beta-\alpha} = 0$ read

$$\begin{aligned}
 \lambda_1 &= \frac{m_h^2}{v^2} - t_\beta(1 + t_\beta^2) \frac{\Omega^2}{v^2} > 0 \\
 \lambda_2 &= \frac{m_h^2}{v^2} - \frac{(1 + t_\beta^{-2})}{t_\beta} \frac{\Omega^2}{v^2} > 0 \\
 \lambda_3 &= \frac{m_h^2}{v^2} - \frac{1}{s_\beta c_\beta} \frac{\Omega^2}{v^2} > -\sqrt{\lambda_1 \lambda_2} \\
 \lambda_3 + \lambda_4 - |\lambda_5| &= \frac{m_h^2}{v^2} + \frac{\Delta^2}{v^2} - \left| \frac{1}{s_\beta c_\beta} \frac{\Omega^2}{v^2} - \frac{\Delta^2}{v^2} \right| > -\sqrt{\lambda_1 \lambda_2}.
 \end{aligned} \tag{17}$$

The first three inequalities in (17) are trivially satisfied for $\Omega^2 \leq 0$. For $|\Delta^2| \gg v^2$, the last one, however, requires

$\Omega^2 \sim s_\beta c_\beta \Delta^2$, and this affects the unitarity bounds which depend on $\lambda_1 + \lambda_2$, e.g.

$$\begin{aligned}
 \left| \lambda_1 + \lambda_2 + \sqrt{(\lambda_1 - \lambda_2)^2 + 4\lambda_4^2} \right| &\sim 2 \frac{|\Delta^2| t_\beta^2}{v^2} (t_\beta \gg 1) \\
 &\sim 2 \frac{|\Delta^2|}{v^2 t_\beta^2} (t_\beta \ll 1)
 \end{aligned} \tag{18}$$

such that only values $t_\beta \sim 1$ are allowed if $|\Delta^2| \gg v^2$.

D. Overview of constraints on H^\pm

Before we comment on the limits from direct searches of H^\pm , let us emphasize that there are two other important sources of constraints on the mass of H^\pm in this case: (i) Flavor physics yields important bounds on m_{H^\pm} , the most stringent one coming from the H^\pm contribution to the flavor violating decay $b \rightarrow s\gamma$. For type II 2HDM, this leads to a lower bound $m_{H^\pm} > 480$ GeV at 95% C.L. [81], while

for type I the bound is milder and depends on t_β [82]. (ii) EWPOs strongly prefer $m_{H^\pm} \sim m_{A_0}$ or $m_{H^\pm} \sim m_{H_0}$ (this last condition is mildly modified away from the alignment limit $c_{\beta-\alpha} = 0$), as a splitting between the charged and neutral components of the doublet breaks custodial symmetry. While some degree of splitting is allowed by EWPOs, it cannot be sizable (see e.g. the analysis of Ref. [31]). In the present work, we have chosen for simplicity to make H^\pm degenerate with the heavier of the two neutral scalars H_0, A_0 , as neglecting small mass splittings between the charged and neutral scalars does not have an appreciable impact on the theoretical constraints on the model, nor on the phenomenological analysis, and satisfies EWPOs. Regarding the bounds from flavor physics, while particularly for type II they motivate our choice of pairing H^\pm with the heavier state among H_0 and A_0 , we do not consider them as limits *stricto sensu*, meaning that for type II we still discuss scenarios in which both m_{A_0} and m_{H_0} are below 480 GeV. We also stress that, since for type I the $b \rightarrow s\gamma$ bound is not as severe, it could be possible for H^\pm to pair with the lighter state among H_0 and A_0 . For a hierarchical 2HDM scenario, this would also open either the decay $A_0 \rightarrow W^\pm H^\mp$ or $H_0 \rightarrow W^\pm H^\mp$ and would make the LHC limits from searches of A_0 and H_0 into SM states even weaker, opening at the same time further opportunities for direct searches of these new states (see e.g. Refs. [35,36]).

We now briefly discuss the current bounds from searches of H^\pm by ATLAS and CMS. For a light H^\pm , $m_{H^\pm} < m_t = 173$ GeV, ATLAS searches for $t \rightarrow H^\pm b$ in top quark pair production with the full data set of run 1 [83,84] set a 95% C.L. bound on the branching fraction $\text{BR}(t \rightarrow H^\pm b) \times \text{BR}(H^\pm \rightarrow \nu\tau) < [0.0023, 0.013]$ in the mass range $m_{H^\pm} \in [80 \text{ GeV}, 160 \text{ GeV}]$. For $m_{H^\pm} > m_t$, ATLAS searches for H^\pm produced in association with a top quark [84] yield the bound $\sigma(pp \rightarrow tH^\pm + X) \times \text{BR}(H^\pm \rightarrow \nu\tau) < [0.76 \text{ pb}, 4.5 \text{ fb}]$ in the range $m_{H^\pm} \in [180 \text{ GeV}, 1000 \text{ GeV}]$. We, however, note that these bounds do not result generically in meaningful constraints, since $\text{BR}(H^\pm \rightarrow \nu\tau) \ll 1$ when the decay $H^\pm \rightarrow tb$ is open. Moreover, in the hierarchical scenario, $\text{BR}(H^\pm \rightarrow \nu\tau)$ may be further suppressed by the presence of either $H^\pm \rightarrow W^\pm A_0$ or $H^\pm \rightarrow W^\pm H_0$ decays.

E. Filling the gaps: $A_0 \rightarrow ZH_0/H_0 \rightarrow ZA_0$ searches

Our previous analysis highlights that, while direct searches for heavy neutral Higgs bosons at the LHC may provide a wide coverage across the 2HDM parameter space, and complementary to measurements of signal strengths, bounds from searches assuming direct decays of the neutral scalars into SM particles become much weaker in a hierarchical 2HDM scenario, and new searches are needed to fill in the gaps. It is also clear that the new searches capable of probing a hierarchical 2HDM are

precisely those which exploit the sizable mass splittings among the neutral scalars, namely² $H_0 \rightarrow ZA_0$ or $A_0 \rightarrow ZH_0$ (we note that if H_0 is the SM-like Higgs and $m_{H_0} = 125 \text{ GeV} > m_h$, then $A_0 \rightarrow Zh$ should be considered instead). For $H_0 \rightarrow ZA_0$, the dominant final state is generically $\ell\ell b\bar{b}$. In the latter case, the relevant final state to search for would depend on the dominant decay mode of H_0 [10]. In alignment, $H_0 \rightarrow b\bar{b}$ (eventually, $H_0 \rightarrow t\bar{t}$ if $m_{H_0} > 340 \text{ GeV}$) would dominate. For a sizable departure from alignment, the dominant decay mode would be $H_0 \rightarrow W^+W^-$, yielding $A_0 \rightarrow ZH_0 \rightarrow \ell\ell W^+W^-$ ($W^+W^- \rightarrow \ell\nu\ell\nu$) as the most sensitive final state.³

In Refs. [37,38], the CMS Collaboration has performed the first analysis of such signatures, with an integrated luminosity of $\mathcal{L} = 19.8 \text{ fb}^{-1}$ at 8 TeV, in the $\ell\ell b\bar{b}$ and $\ell\ell\tau\tau$ final states. We discuss here the limits on the 2HDM parameter space that may be derived from that search in the alignment limit, having checked that in this case the $\ell\ell b\bar{b}$ final state is significantly more sensitive than $\ell\ell\tau\tau$ across the whole parameter space. We stress that from the point of view of the CMS analysis, the limits on the production cross sections for $A_0 \rightarrow ZH_0$ and $H_0 \rightarrow ZA_0$ are identical for the same kinematical mass point. However, the translation between these limits and the constraints on the 2HDM parameter space is quite different in the two cases.

We first concentrate on $A_0 \rightarrow ZH_0$ ($A_0 \rightarrow Zh$ for $m_{H_0} = 125 \text{ GeV}$) and show in Fig. 6 the lower bounds on t_β in the (m_{A_0}, m_{H_0}) plane for type I (top left) and type II (top right) from gluon fusion production of A_0 . We assume the alignment limit, that is $c_{\beta-\alpha} = 0$ if h is the SM-like Higgs and $s_{\beta-\alpha} = 0$ if H_0 is instead the SM-like Higgs. The search constrains up to $t_\beta \sim 5$ around $m_{A_0} = 380 \text{ GeV}$ and additionally yields the limit $t_\beta \gtrsim 2$ for $m_h < 80 \text{ GeV}$ and $m_{A_0} < 600 \text{ GeV}$. Similarly, for type II, we can derive upper bounds on t_β from $\bar{b}b$ -associated production of A_0 , shown in Fig. 6 (bottom). We, however, expect a weakening of all these limits once there is departure from the alignment limit, and we emphasize that searches for the $H_0 \rightarrow W^+W^-$ and ZZ decay modes are very much needed in this region (note that for $t_\beta^{-1}s_{\beta-\alpha} - c_{\beta-\alpha} \sim 0$, direct searches for $H_0 \rightarrow W^+W^-$ and ZZ which assume gluon fusion production will not be sensitive to H_0).

In order to illustrate the complementarity between the above limits from $A_0 \rightarrow ZH_0$ searches and those from the most sensitive ATLAS/CMS searches for A_0 and H_0 decaying directly into SM states analyzed in Secs. III B and III C, as well as their interplay with measurements of

²Other decay modes could also be promising, like $A_0/H_0 \rightarrow W^\pm H^\pm$ or $H^\pm \rightarrow W^\pm A_0/H_0$, depending on m_{H^\pm} [35,36].

³Other competitive final states are $H_0 \rightarrow W^+W^-$ ($W^+W^- \rightarrow \ell\nu jj$) and $H_0 \rightarrow ZZ$ yielding $A_0 \rightarrow ZH_0 \rightarrow \ell\ell\ell'\ell'jj$ [34].

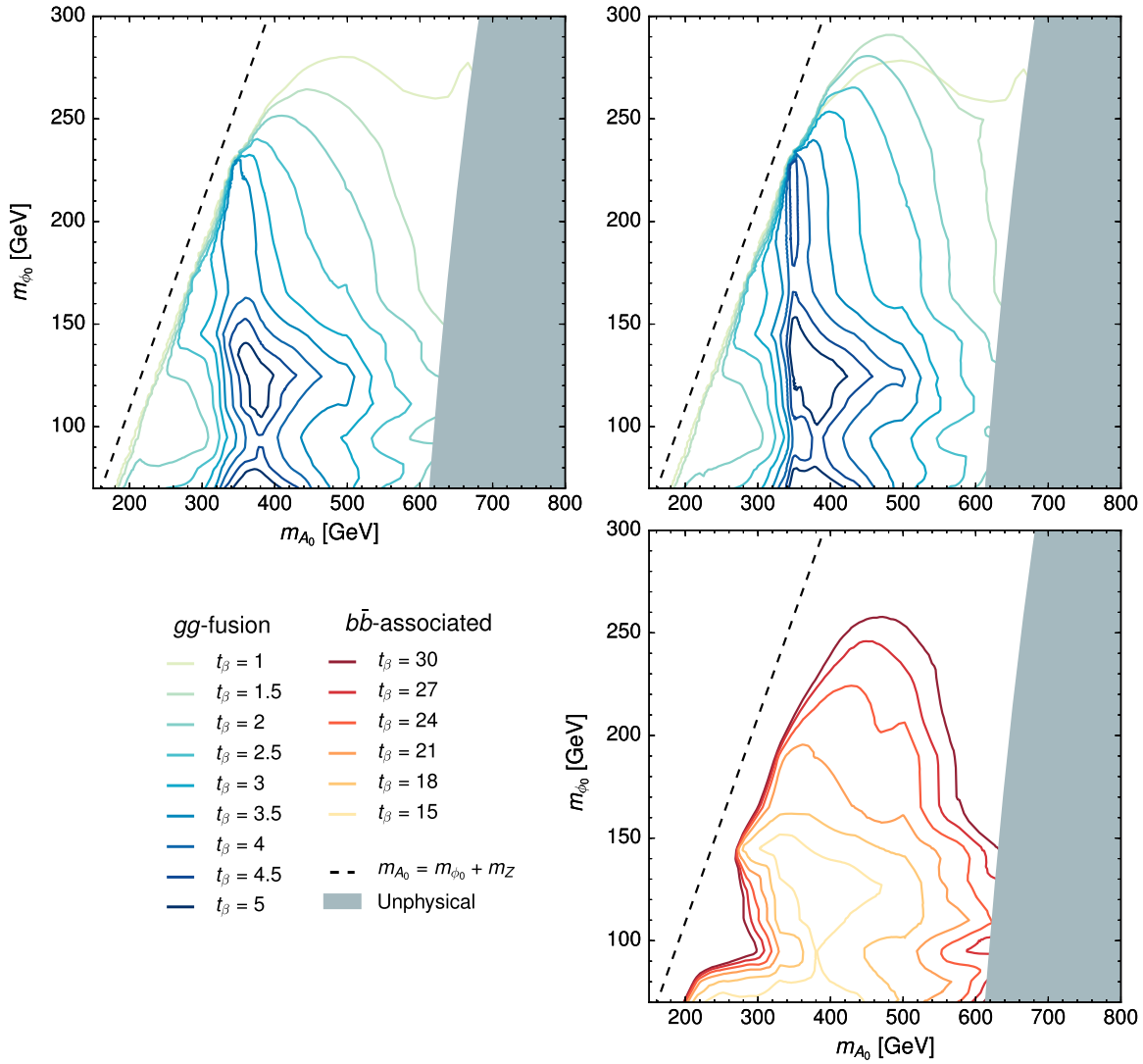


FIG. 6. Bounds on t_β in the (m_{A_0}, m_{ϕ_0}) plane from the search for $gg/b\bar{b} \rightarrow A_0 \rightarrow Z\phi_0 \rightarrow \ell\ell b\bar{b}$ performed in Refs. [37,38], for 2HDM of type I (left) and type II (right). In each case, $\phi_0 = H_0$ for $m_{H_0} > m_h = 125$ GeV, while $\phi_0 = h$ for $m_{H_0} = 125$ GeV $> m_h$. The alignment limit is assumed. The gray regions are theoretically excluded.

Higgs signal strengths from Sec. III A (we take here the limits obtained with HIGGSIGNALS), we present a summary of the various bounds on the $(c_{\beta-\alpha}, t_\beta)$ plane in Figs. 7 and 8 for types I/II (left/right): Fig. 7 (top) shows the combined limits for $m_{A_0} = m_{H_0} = 150$ GeV (only the degenerate scenario is considered in this case). Focusing then on $m_{A_0} = 300$ GeV, Fig. 7 (bottom) highlights the fact that close to $c_{\beta-\alpha} = 0$ the CMS search for $A_0 \rightarrow ZH_0$ ($H_0 \rightarrow b\bar{b}$) in the hierarchical 2HDM scenario yields a superior sensitivity to the one obtained in the degenerate 2HDM scenario via the union of limits from A_0 and H_0 searches for low t_β (for high t_β in type II, the $A_0/H_0 \rightarrow \tau\tau$ searches always have a superior sensitivity to $A_0 \rightarrow ZH_0$, and we choose not to show the bounds from the latter in Figs. 7 and 8). It is also interesting to note that, while in the degenerate scenario the combination of A_0 and H_0 searches

exclude the type II *wrong-sign* region allowed by Higgs signal strength measurements, in the hierarchical scenario, the *wrong-sign* region is allowed by direct searches.

We note that for $m_{A_0} = 150$ GeV and $m_{A_0} = 300$ GeV, the choice between $\mu^2 = \mu_{\min}^2$ and $\mu^2 = \mu_{\max}^2$ does not impact the limits shown in Fig. 7 since the di-Higgs searches are not the most constraining in this plane. For $m_{A_0} = 500$ GeV, the situation is different, as shown in Fig. 8. Here, the degenerate case is the least constrained, cutting into the edges of the type I light Higgs limits and not significantly affecting the type II exclusions near alignment. In the μ_{\max} scenario, the di-Higgs searches improve the limits toward alignment around $t_\beta \sim 1$. As one decreases the H_0 mass, the picture changes considerably, with the direct H_0 searches proving particularly effective for $m_{H_0} = 300$ GeV, even near alignment. For

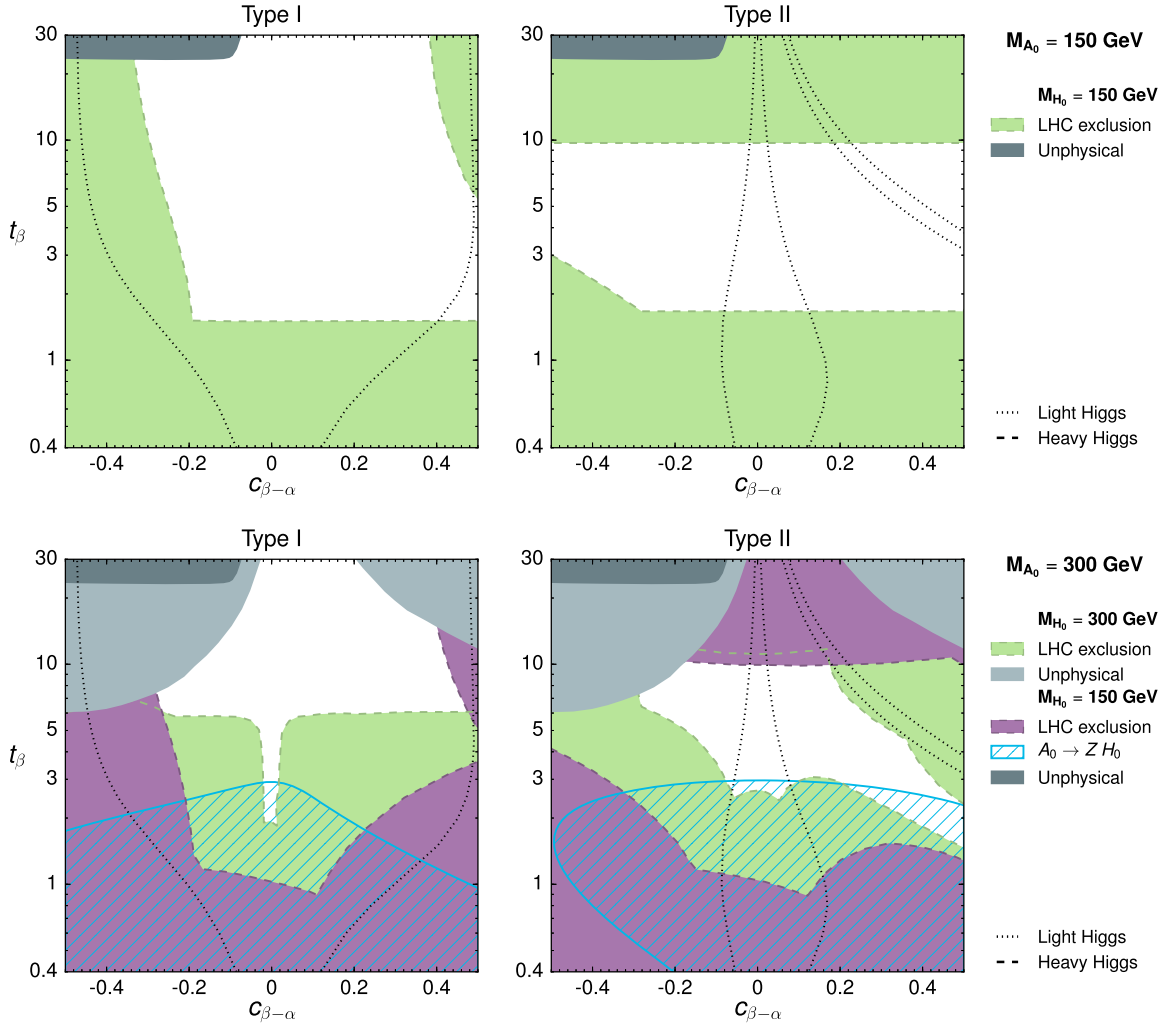


FIG. 7. Limits in the $(c_{\beta-\alpha}, t_\beta)$ plane for $m_{A_0} = 150/300$ GeV (top/bottom) and types I/II (left/right), from measurements of Higgs signal strengths obtained with HiggsSignals (dotted black lines; see Sec. III A) and from the most sensitive ATLAS/CMS searches for A_0 and H_0 decaying directly into SM states: the green region corresponds to the exclusion in the degenerate scenario $m_{H_0} = m_{A_0}$; purple regions correspond to the exclusion in the hierarchical scenario (see Secs. III B and III C). The dashed blue region corresponds to the exclusion from the CMS $A_0 \rightarrow ZH_0 \rightarrow \ell\ell b\bar{b}$ search [37,38] in the hierarchical scenario. The gray regions are theoretically excluded.

$m_{H_0} = 150$ GeV, the $A_0 \rightarrow ZH_0$ becomes sensitive and provides excellent coverage up to $t_\beta \sim 3$, generally improving on the direct searches. We note, again, that the wrong-sign scenario in type II is excluded in the degenerate and $m_{H_0} = 300$ GeV cases, while it is mostly allowed in the lightest H_0 case.

Turning to $H_0 \rightarrow ZA_0$, we show the limits on t_β in the (m_{A_0}, m_{H_0}) plane in Fig. 9, for type I (left) and type II (right) in the alignment limit. A few comments are in order. First, the limits are expected to be weaker than for $A_0 \rightarrow ZH_0$, as the production cross section for A_0 is larger than that for H_0 for the same mass. More importantly, when $m_{H_0} > 2m_{A_0}$, the decay $H_0 \rightarrow A_0A_0$ becomes kinematically possible, which weakens the bounds from $H_0 \rightarrow ZA_0$ and also makes them dependent on μ^2 , since $\text{BR}(H_0 \rightarrow A_0A_0)$ does depend on this parameter. Figure 9 (top) shows

the limits for $\mu^2 = \mu_{\min}^2$, while Fig. 9 (bottom) shows the limits for $\mu^2 = \mu_{\max}^2$ which are identical for $m_{H_0} < 2m_{A_0}$ but much weaker for $m_{H_0} > 2m_{A_0}$ as expected. Note also that for $t_\beta = 1$, the limits are identical in both mass regions, since $\lambda_{H_0A_0A_0} = 0$ and the μ^2 dependence therefore disappears. Additionally, a small allowed region appears around masses of $m_{A_0} = 100$ and $m_{H_0} = 260$ GeV. In the region $m_{H_0} > 2m_{A_0}$, the width of H_0 very quickly reaches $\Gamma_{H_0}/m_{H_0} > 0.15$, for which the bounds from the analysis [37,38] are no longer robust (these regions are shaded in Fig. 9). This is in contrast with $A_0 \rightarrow ZH_0$ bounds, for which $\Gamma_{A_0}/m_{A_0} < 0.15$ throughout the whole allowed parameter space. From the comparison of Figs. 6 and 9, it is also apparent that for a sizable splitting $m_{H_0} - m_{A_0} > 0$, the 2HDM parameter space is much more theoretically constrained than for a splitting

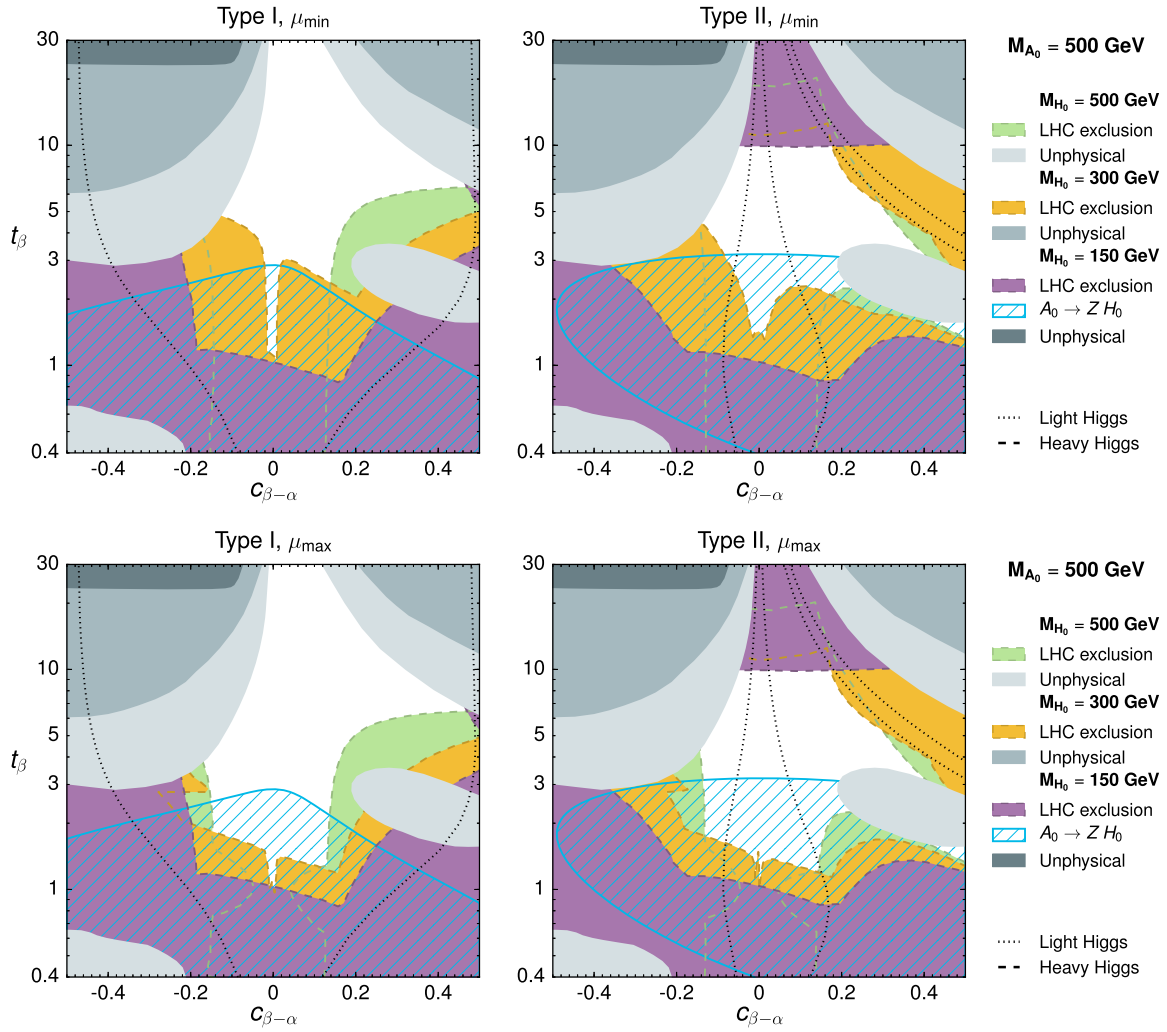


FIG. 8. Limits in the $(c_{\beta-\alpha}, t_\beta)$ plane for $m_{A_0} = 500$ GeV with $\mu^2 = \mu_{\min}^2 / \mu^2 = \mu_{\max}^2$ (top/bottom) and types I/II (left/right), from measurements of Higgs signal strengths obtained with HIGGSIGNALS (dotted black lines; see Sec. III A) and from the most sensitive ATLAS/CMS searches for A_0 and H_0 decaying directly into SM states: the green region corresponds to the exclusion in the degenerate scenario $m_{H_0} = m_{A_0}$; purple/orange regions correspond to the exclusion in the hierarchical scenario(s) (see Secs. III B and III C). The dashed blue region corresponds to the exclusion from the CMS $A_0 \rightarrow ZH_0 \rightarrow \ell\ell b\bar{b}$ search [37,38] in the hierarchical scenario $m_{H_0} = 150$ GeV. The gray regions are theoretically excluded.

$m_{A_0} - m_{H_0} > 0$ of the same magnitude, and the constraints become more stringent as t_β increases (recall the discussion in Sec. III C). For example, for $t_\beta > 2$ $m_{H_0} \lesssim 500$ GeV is required, as shown in Fig. 9.

IV. HIERARCHICAL 2HDM AND LHC RUN II

LHC run 2 at 13 TeV represents a great opportunity to dig further into the parameter space of hierarchical 2HDM scenarios, since the sensitivity of the searches described in the previous section is limited mainly by small cross section values at the 8 TeV run of the LHC. While a detailed analysis of the LHC run 2 prospects for the hierarchical scenario of the 2HDM is beyond the scope of this work, we present in this section benchmark planes in (m_{A_0}, m_{H_0}) for

$A_0 \rightarrow ZH_0$ searches, classified according to the 2HDM type (I/II) and the proximity to the alignment limit.

In Fig. 10 (top), we provide $\sigma(gg \rightarrow A_0 \rightarrow ZH_0) \times \text{BR}(H_0 \rightarrow X)$ for types I/II (left/right) and a reference value $t_\beta = 3$, with X being the relevant decay mode of H_0 in each case. In alignment $c_{\beta-\alpha} = 0$ (Fig. 10, top), X is the main fermionic decay of H_0 , namely $\bar{b}b$ for $m_{H_0} < 340$ GeV and $\bar{t}t$ for $m_{H_0} > 340$ GeV. Away from alignment $c_{\beta-\alpha} \gtrsim 0.2$ (Fig. 10, bottom), $X = W^+W^-$, and we choose $c_{\beta-\alpha} = 0.55$ for type II⁴ and $c_{\beta-\alpha} = 0.3$ for type I.

⁴We note that, while this benchmark point is excluded by the LILITH likelihood fit to Higgs signal strengths, it is allowed by the corresponding fit by HIGGSIGNALS (see Fig. 1) as well as the ATLAS/CMS fits [11,12], and so we choose to consider it.

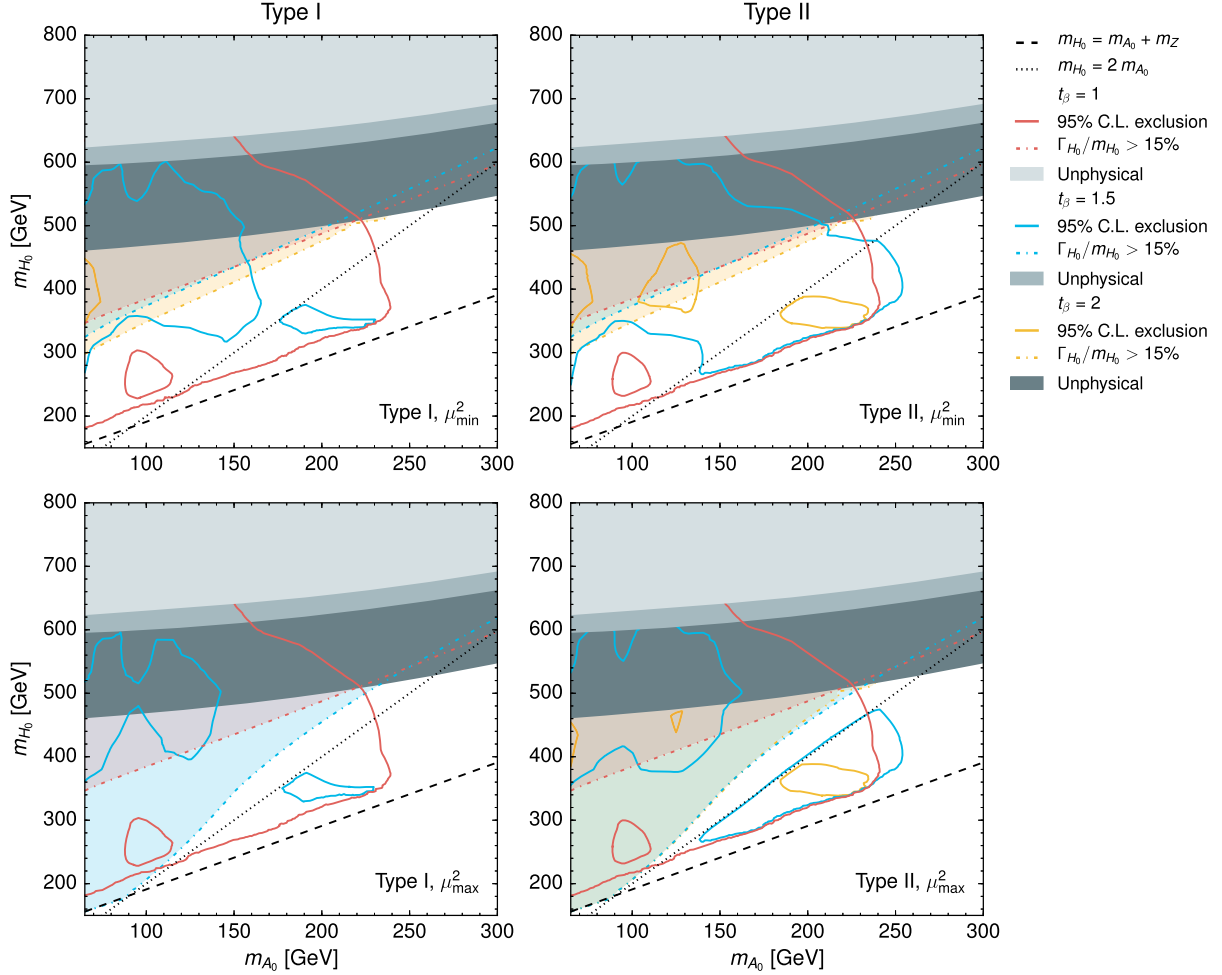


FIG. 9. Bounds on t_β in the (m_{A_0}, m_{H_0}) plane for $c_{\beta-\alpha} = 0$, from the search for $gg/b\bar{b} \rightarrow H_0 \rightarrow ZA_0 \rightarrow \ell\ell b\bar{b}$ performed in Refs. [37,38], for 2HDM of type I (left) and type II (right) and for $\mu^2 = \mu_{\min}^2/\mu^2 = \mu_{\max}^2$ (top/bottom, respectively). The gray regions are theoretically excluded, while the shaded regions correspond to $\Gamma_{H_0}/m_{H_0} > 0.15$, which goes beyond the narrow width assumption made in the analysis. Excluded regions are therefore the areas between the colored contours which lie outside of the corresponding shaded area delimited by the dot-dashed line of the same color. The dotted-black line corresponds to $m_{H_0} = 2m_{A_0}$, above which the decay $H_0 \rightarrow A_0 A_0$ becomes kinematically possible.

We show in each case the constraint from the LHC run 1 $A_0 \rightarrow ZH_0$ ($H \rightarrow \bar{b}b$) CMS search [37,38], noting that, besides providing useful limits in alignment (recall Fig. 6), it can also constrain the (m_{A_0}, m_{H_0}) plane away from alignment. This is most relevant in type II, where $\kappa_d^{H_0}$ increases with t_β , and for $m_{H_0} \lesssim 180$ GeV as shown in Fig. 10 (see also Figs. 7 and 8). In contrast, for the benchmarks chosen away from alignment, there are no limits from $gg \rightarrow H_0 \rightarrow W^+W^-$ searches in the whole (m_{A_0}, m_{H_0}) plane; for type I, this is due to $\kappa_u^{H_0} \ll 1$ (H_0 is approximately fermiophobic), while for type II, it is due to the $(\kappa_d^{H_0})^2$ enhancement of the partial width $\Gamma(H_0 \rightarrow \bar{b}b)$ vs the $(\kappa_V^{H_0})^2$ suppression of the partial width $\Gamma(H_0 \rightarrow W^+W^-)$. The discussion above emphasizes the

search $gg \rightarrow A_0 \rightarrow ZH_0$ ($H_0 \rightarrow W^+W^-$) as potentially key to probing a hierarchical 2HDM scenario away from the alignment limit.

Before concluding this section, a few comments are important. For type II, the combination of flavor bounds on m_{H^\pm} and EWPOs would disfavor a 2HDM spectrum with both m_{A_0} and m_{H_0} significantly below 480 GeV, as discussed in Sec. III D. We choose not to show this in Fig. 10, as these indirect limits (particularly the flavor bound) could be modified in the presence of new physics. Also, while we do not discuss here the prospects for searches of H_0 decaying into non-SM states, we emphasize that searches for $H_0 \rightarrow ZA_0$ and $H_0 \rightarrow A_0 A_0$ may be key to probing a hierarchical 2HDM scenario with $m_{H_0} > m_{A_0}$.

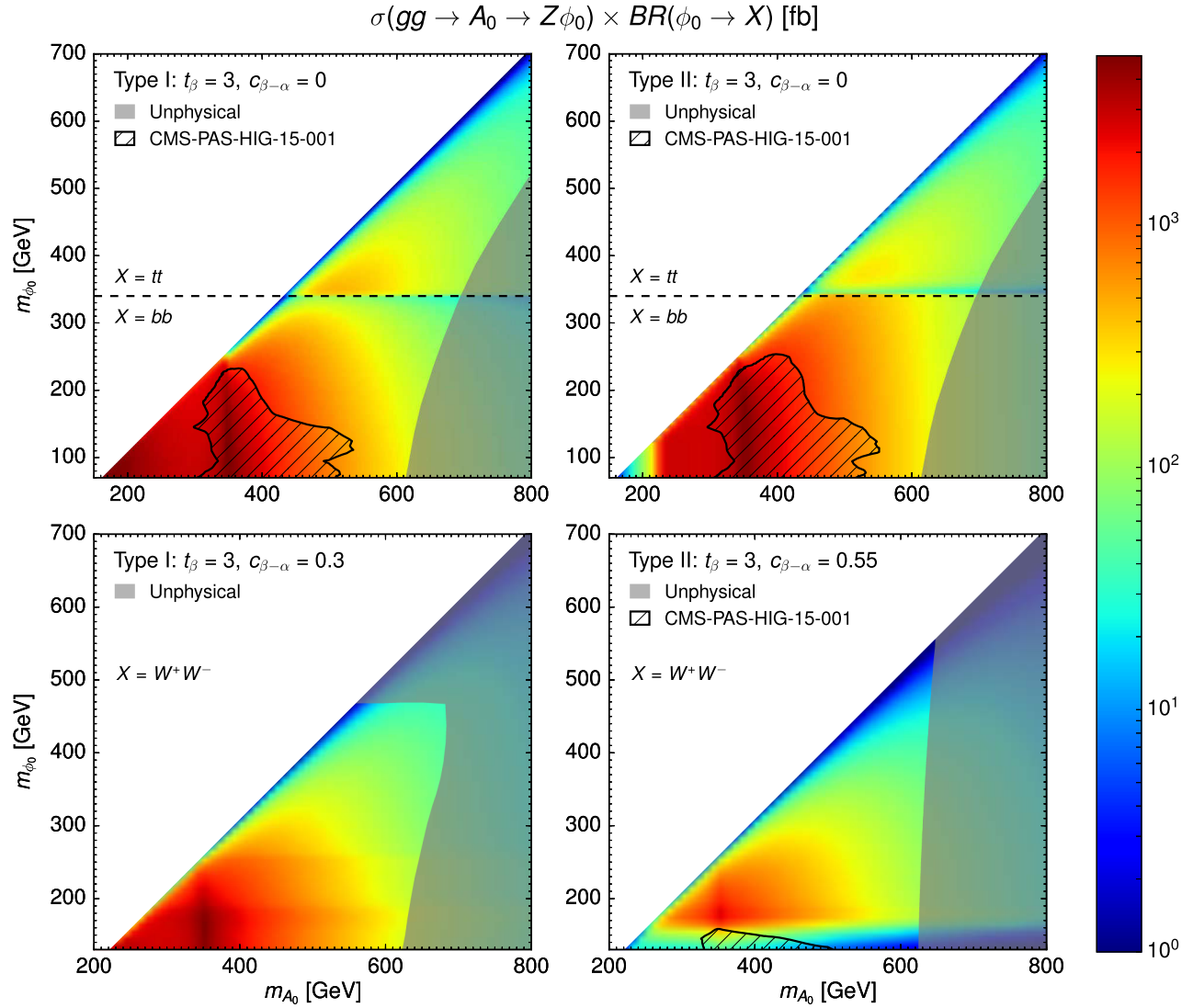


FIG. 10. Cross section $\sigma(gg \rightarrow A_0 \rightarrow Z\phi_0) \times BR(\phi_0 \rightarrow X)$ in the (m_{A_0}, m_{ϕ_0}) plane, for type I (left) and type II (right). In each case, $\phi_0 = H_0$ for $m_{H_0} > m_h = 125$ GeV, while $\phi_0 = h$ for $m_{H_0} = 125$ GeV $> m_h$. Top: alignment limit ($c_{\beta-\alpha} = 0$ for $\phi_0 = H_0$, $s_{\beta-\alpha} = 0$ for $\phi_0 = h$), with $X = \bar{b}b$ if $m_{H_0} < 340$ GeV and $X = \bar{t}t$ if $m_{H_0} > 340$ GeV. The dashed black region corresponds to the exclusion from the LHC run 1 $A_0 \rightarrow ZH_0(h) \rightarrow \ell\ell\bar{b}b$ CMS search [37,38]. Bottom: departure from alignment, with $X = W^+W^-$ and $c_{\beta-\alpha} = 0.3$ for type I and $c_{\beta-\alpha} = 0.55$ for type II. The value of the soft Z_2 -breaking parameter is fixed to $\mu^2 = m_{H_0}^2 s_\beta c_\beta$ ($\Omega^2 = 0$, see the discussion in Sec. III B). The gray regions are theoretically excluded.

V. DISCUSSION AND OUTLOOK

Uncovering the full structure of the SM scalar sector and its possible extensions will be a central task for the LHC in the coming years. The results will have important implications not only for our understanding of the mechanism of electroweak symmetry breaking but also for the origin of visible matter and the nature of dark matter. Extensions of the SM scalar sector that address one or both of these open questions may yield distinctive signatures at the LHC via modifications of the SM Higgs boson properties and/or the observation of new states.

In this work, we have investigated the constraints on the parameter space of CP -conserving two-Higgs-doublet models of types I/II in light of the ATLAS/CMS results from LHC run 1. A key difference from the many similar analyses already existing in the literature is that the latter generally assume a nearly degenerate 2HDM spectrum for the new scalar states, which can then only decay into SM particles. While the properties of the observed 125 GeV Higgs are not affected by the mass spectrum of the new scalars (as discussed in Sec. III A), a large mass splitting between two or more of the new scalar states,

e.g. $m_{A_0} - m_{H_0} \gtrsim m_Z$, causes new decay channels of the heavier scalars to open and become dominant. For such a hierarchical 2HDM, we show that the constraints usually obtained in the literature are *significantly* weakened. On the other hand, the new decay channels constitute novel ways of searching for these scalar states, e.g. $A_0 \rightarrow ZH_0$, and we show how they can be used to fill in the gaps left by previous analyses. We also highlight the importance of the μ^2 parameter, through its impact on the phenomenology of the heavier CP -even scalar H_0 and its sensitivity to unitarity and stability constraints.

ACKNOWLEDGMENTS

We thank Jeremy Bernon for useful discussions. The work of S.H. and K.M. is supported by the Science Technology and Facilities Council under Grant No. ST/L000504/1. J. M. N. is supported by the People Programme (Marie Curie Actions) of the European Union Seventh Framework Programme (FP7/2007-2013) under REA Grant No. PIEF-GA-2013-625809. G. C. D. is supported by the German Science Foundation under the Collaborative Research Center (SFB) 676 Particles, Strings and the Early Universe.

-
- [1] G. Aad *et al.* (ATLAS Collaboration), *Eur. Phys. J. C* **76**, 6 (2016).
 - [2] V. Khachatryan *et al.* (CMS Collaboration), *Eur. Phys. J. C* **75**, 212 (2015).
 - [3] ATLAS and CMS Collaborations, Report No. ATLAS-CONF-2015-044.
 - [4] CMS Collaboration, Report No. CMS-PAS-HIG-15-002.
 - [5] G. C. Branco, P. M. Ferreira, L. Lavoura, M. N. Rebelo, M. Sher, and J. P. Silva, *Phys. Rep.* **516**, 1 (2012).
 - [6] J. M. Cline, K. Kainulainen, and A. P. Vischer, *Phys. Rev. D* **54**, 2451 (1996).
 - [7] J. M. Cline and P. A. Lemieux, *Phys. Rev. D* **55**, 3873 (1997).
 - [8] L. Fromme, S. J. Huber, and M. Seniuch, *J. High Energy Phys.* **11** (2006) 038.
 - [9] G. C. Dorsch, S. J. Huber, and J. M. No, *J. High Energy Phys.* **10** (2013) 029.
 - [10] G. C. Dorsch, S. J. Huber, K. Mimasu, and J. M. No, *Phys. Rev. Lett.* **113**, 211802 (2014).
 - [11] G. Aad *et al.* (ATLAS Collaboration), *J. High Energy Phys.* **11** (2015) 206.
 - [12] CMS Collaboration, Report No. CMS-PAS-HIG-16-007.
 - [13] A. Celis, V. Ilisie, and A. Pich, *J. High Energy Phys.* **07** (2013) 053.
 - [14] M. Krawczyk, D. Sokolowska, and B. Swiezewska, *J. Phys. Conf. Ser.* **447**, 012050 (2013).
 - [15] C. W. Chiang and K. Yagyu, *J. High Energy Phys.* **07** (2013) 160.
 - [16] B. Grinstein and P. Uttayarat, *J. High Energy Phys.* **06** (2013) 094; [09 (2013) 110(E)].
 - [17] B. Coleppa, F. Kling, and S. Su, *J. High Energy Phys.* **01** (2014) 161.
 - [18] C.-Y. Chen, S. Dawson, and M. Sher, *Phys. Rev. D* **88**, 015018 (2013).
 - [19] N. Craig, J. Galloway, and S. Thomas, *arXiv:1305.2424*.
 - [20] O. Eberhardt, U. Nierste, and M. Wiebusch, *J. High Energy Phys.* **07** (2013) 118.
 - [21] S. Chang, S. K. Kang, J. P. Lee, K. Y. Lee, S. C. Park, and J. Song, *J. High Energy Phys.* **09** (2014) 101.
 - [22] K. Cheung, J. S. Lee, and P. Y. Tseng, *J. High Energy Phys.* **01** (2014) 085.
 - [23] L. Wang and X. F. Han, *J. High Energy Phys.* **04** (2014) 128.
 - [24] J. Baglio, O. Eberhardt, U. Nierste, and M. Wiebusch, *Phys. Rev. D* **90**, 015008 (2014).
 - [25] S. Inoue, M. J. Ramsey-Musolf, and Y. Zhang, *Phys. Rev. D* **89**, 115023 (2014).
 - [26] B. Dumont, J. F. Gunion, Y. Jiang, and S. Kraml, *Phys. Rev. D* **90**, 035021 (2014).
 - [27] J. Bernon, B. Dumont, and S. Kraml, *Phys. Rev. D* **90**, 071301 (2014).
 - [28] B. Dumont, J. F. Gunion, Y. Jiang, and S. Kraml, *arXiv:1409.4088*.
 - [29] D. Chowdhury and O. Eberhardt, *J. High Energy Phys.* **11** (2015) 052.
 - [30] N. Craig, F. D'Eramo, P. Draper, S. Thomas, and H. Zhang, *J. High Energy Phys.* **06** (2015) 137.
 - [31] J. Bernon, J. F. Gunion, H. E. Haber, Y. Jiang, and S. Kraml, *Phys. Rev. D* **92**, 075004 (2015).
 - [32] J. Bernon, J. F. Gunion, H. E. Haber, Y. Jiang, and S. Kraml, *Phys. Rev. D* **93**, 035027 (2016).
 - [33] E. Cerver and J. M. Gerard, *Phys. Lett. B* **712**, 255 (2012).
 - [34] B. Coleppa, F. Kling, and S. Su, *J. High Energy Phys.* **09** (2014) 161.
 - [35] B. Coleppa, F. Kling, and S. Su, *J. High Energy Phys.* **12** (2014) 148.
 - [36] T. Li and S. Su, *J. High Energy Phys.* **11** (2015) 068.
 - [37] CMS Collaboration, Report No. CMS-PAS-HIG-15-001.
 - [38] V. Khachatryan *et al.* (CMS Collaboration), *Phys. Lett. B* **759**, 369 (2016).
 - [39] J. Bernon, J. F. Gunion, Y. Jiang, and S. Kraml, *Phys. Rev. D* **91**, 075019 (2015).
 - [40] S. L. Glashow and S. Weinberg, *Phys. Rev. D* **15**, 1958 (1977).
 - [41] J. F. Gunion and H. E. Haber, *Phys. Rev. D* **67**, 075019 (2003).
 - [42] M. Maniatis, A. von Manteuffel, O. Nachtmann, and F. Nagel, *Eur. Phys. J. C* **48**, 805 (2006).
 - [43] B. Grinstein, C. W. Murphy, and P. Uttayarat, *arXiv:1512.04567*.
 - [44] A. G. Akeroyd, A. Arhrib, and E. M. Naimi, *Phys. Lett. B* **490**, 119 (2000).

- [45] J.-M. Gerard and M. Herquet, *Phys. Rev. Lett.* **98**, 251802 (2007).
- [46] W. Grimus, L. Lavoura, O.M. Ogreid, and P. Osland, *J. Phys. G* **35**, 075001 (2008).
- [47] ATLAS Collaboration, Report Nos. ATLAS-CONF-2013-030; ATLAS-COM-CONF-2013-028.
- [48] G. Aad *et al.* (ATLAS Collaboration), *Phys. Lett. B* **726**, 88 (2013); **734**, 406 (2014).
- [49] ATLAS Collaboration, Report No. ATLAS-CONF-2013-075.
- [50] S. Chatrchyan *et al.* (CMS Collaboration), *J. High Energy Phys.* **01** (2014) 096.
- [51] CMS Collaboration, Report No. CMS-PAS-HIG-13-017.
- [52] G. Aad *et al.* (ATLAS Collaboration), *Phys. Rev. D* **91**, 012006 (2015).
- [53] S. Chatrchyan *et al.* (CMS Collaboration), *Phys. Rev. D* **89**, 092007 (2014).
- [54] G. Aad *et al.* (ATLAS Collaboration), *Phys. Rev. D* **90**, 112015 (2014).
- [55] V. Khachatryan *et al.* (CMS Collaboration), *Eur. Phys. J. C* **74**, 3076 (2014).
- [56] ATLAS collaboration, Report Nos. ATLAS-CONF-2013-079; ATLAS-COM-CONF-2013-080.
- [57] S. Chatrchyan *et al.* (CMS Collaboration), *Phys. Rev. D* **89**, 012003 (2014).
- [58] ATLAS Collaboration, Report Nos. ATLAS-CONF-2013-108; ATLAS-COM-CONF-2013-095.
- [59] S. Chatrchyan *et al.* (CMS Collaboration), *J. High Energy Phys.* **05** (2014) 104.
- [60] A. Arhrib, M. Capdequi Peyranere, W. Hollik, and S. Penaranda, *Phys. Lett. B* **579**, 361 (2004).
- [61] G. Bhattacharyya, D. Das, P. B. Pal, and M. N. Rebelo, *J. High Energy Phys.* **10** (2013) 081.
- [62] P. M. Ferreira, J. F. Gunion, H. E. Haber, and R. Santos, *Phys. Rev. D* **89**, 115003 (2014).
- [63] J. Bernon and B. Dumont, *Eur. Phys. J. C* **75**, 440 (2015).
- [64] P. Bechtle, S. Heinemeyer, O. Stl, T. Stefaniak, and G. Weiglein, *Eur. Phys. J. C* **74**, 2711 (2014).
- [65] P. Bechtle, S. Heinemeyer, O. Stl, T. Stefaniak, and G. Weiglein, *J. High Energy Phys.* **11** (2014) 039.
- [66] G. Aad *et al.* (ATLAS Collaboration), *Phys. Lett. B* **744**, 163 (2015).
- [67] V. Khachatryan *et al.* (CMS Collaboration), *Phys. Lett. B* **748**, 221 (2015).
- [68] G. Aad *et al.* (ATLAS Collaboration), *Phys. Rev. Lett.* **113**, 171801 (2014).
- [69] CMS Collaboration (CMS Collaboration), Report No. CMS-PAS-HIG-14-006.
- [70] G. Aad *et al.* (ATLAS Collaboration), *J. High Energy Phys.* **11** (2014) 056.
- [71] V. Khachatryan *et al.* (CMS Collaboration), *J. High Energy Phys.* **10** (2014) 160.
- [72] CMS Collaboration, [arXiv:1307.7135](https://arxiv.org/abs/1307.7135).
- [73] R. V. Harlander, S. Liebler, and H. Mantler, *Comput. Phys. Commun.* **184**, 1605 (2013).
- [74] D. Eriksson, J. Rathsmann, and O. Stal, *Comput. Phys. Commun.* **181**, 189 (2010).
- [75] ATLAS Collaboration, Report Nos. ATLAS-CONF-2013-013; ATLAS-COM-CONF-2013-018.
- [76] G. Aad *et al.* (ATLAS Collaboration), *Phys. Rev. D* **92**, 012006 (2015).
- [77] G. Aad *et al.* (ATLAS Collaboration), *Phys. Rev. Lett.* **114**, 081802 (2015).
- [78] V. Khachatryan *et al.* (CMS Collaboration), *J. High Energy Phys.* **10** (2015) 144.
- [79] CMS Collaboration, Report No. CMS-PAS-HIG-13-032.
- [80] V. Khachatryan *et al.* (CMS Collaboration), *Phys. Lett. B* **749**, 560 (2015).
- [81] M. Misiak *et al.*, *Phys. Rev. Lett.* **114**, 221801 (2015).
- [82] T. Hermann, M. Misiak, and M. Steinhauser, *J. High Energy Phys.* **11** (2012) 036.
- [83] ATLAS Collaboration, Report No. ATLAS-CONF-2013-090.
- [84] G. Aad *et al.* (ATLAS Collaboration), *J. High Energy Phys.* **03** (2015) 088.